



GetonAgain

Cutting & Sewing

Flex manufacturing of flexible materials.

Software, Hardware, Machinery, Complete Solution Equipment.

Full Range of Technologies & Products.

Wide Range of Applications, Fulfilled Various Markets.



GETONAGAIN JEANS
One-Stop Sewing Solution

Tianjin Getonagain Technology Co.,Ltd

Add: No.1-108, Haibin Commercial Center, Baodi District,
Tianjin, China

Tel: +86 22-2252 1236 +86-150 2267 6886

Email: sales@getonagain.com www.getonagain.com

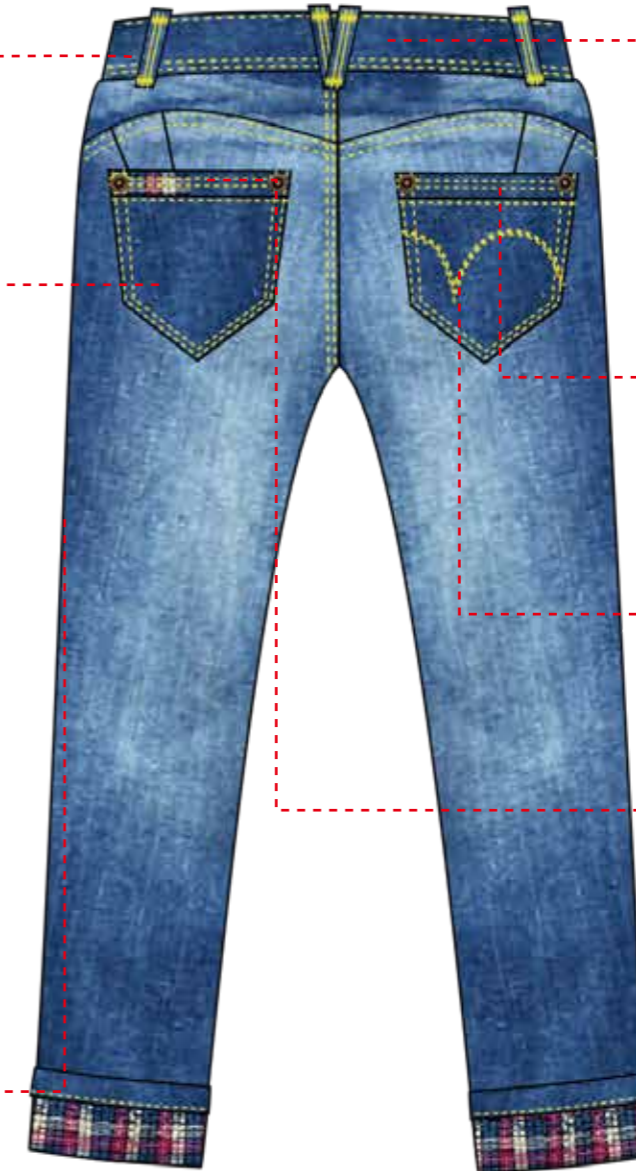
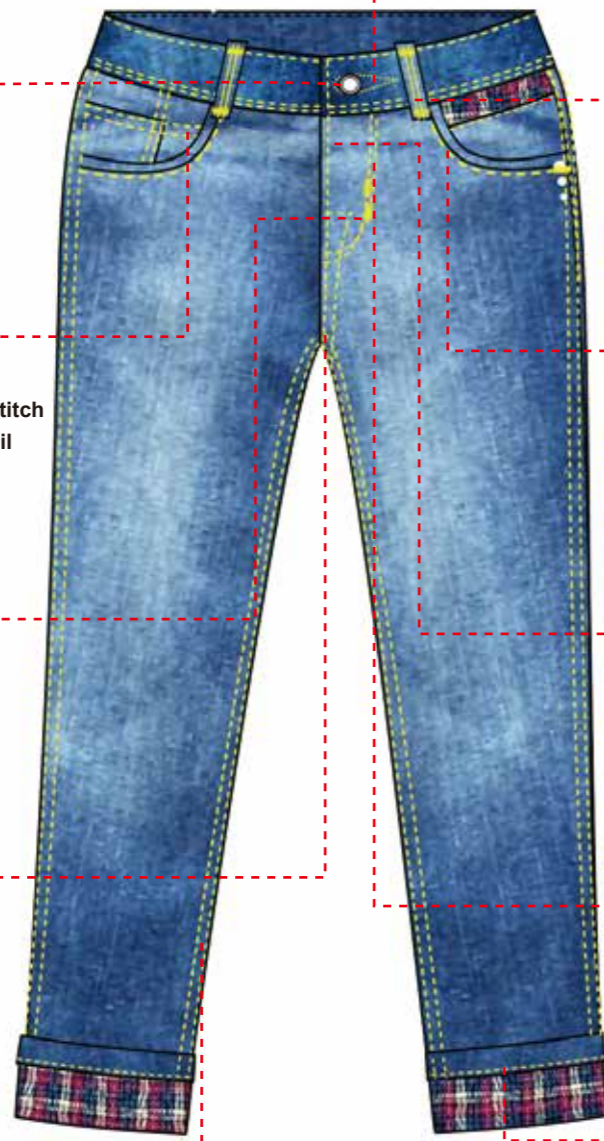
Branch Office: India| Bangladesh| Pakistan| Vietnam| Europe|
South America

WWW.GETONAGAIN.COM



Contents

Computerized Pattern Lockstitch Sewing Machine	03
High-speed Double-needle Lockstitch Sewing Machine With Semi-dry Oil	03
Super high speed computer overlock sewing machine	04
Super high speed computer overlock sewing machine	04
Automatic Placket Machine	05
Automatic Feed-off The Arm Machine	05
Belt-loop Sewing Machine With Cutter	06
Chainstitch Waist Band Machine	06
Double Needle Belt-loop Attaching Machine	07
Automatic Pocket Hemmer Machine	07
Automatic Non-ironing Pocket Machine	08
Automatic Pocket Pattern Sewing Machine	08
Automatic Bottom Hemming Machine	09
Automatic Eyelet Button Holing Machine	09
Bartack Sewing Machine	10
Automatic Lockstitch Sewing Machine with Thread and Knife	10
Automatic Button Attaching/Riveting Machine	11
Automatic Trousers Presser Machine (Steam Integrated Machine)	12
Automatic folding packaging machine (with sealing)	13
Equipment ratio list for jeans sewing assembly line (8-hours) with output of 4000pcs/day	14



Automatic Button Attaching Machine GOA-170C



High-speed Double-needle Lockstitch Sewing Machine With Semi-dry Oil GOA-8450D-H



GOA Bartack Sewing Machine GOA-1900B-JS



Super high speed computer Overlock sewing machine (3 line) GOA-F1-3QZ-H



Automatic Feed-off The Arm Machine GOA-9588



Automatic Eyelet Button Holing Machine GOA-9820



Belt-loop Sewing Machine With Cutter GOA-2000C-SD



Automatic Lockstitch Sewing Machine with Thread and Knife GOA-5200D



Computerized Pattern Lockstitch Sewing Machine GOA-2020A-H



Automatic Placket Machine GOA-1010-MJ



Automatic Bottom Hemming Machine GOA-63922-D4



Double Needle Belt-loop Attaching Machine GOA-254



Automatic Non-ironing Pocket Machine GOA-311-BR



Super high speed computer Overlock sewing machine (5 line) GOA-F1-5QZ-H



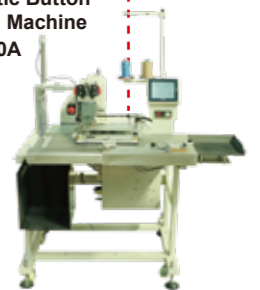
Chainstitch Waist Band Machine Need the customer to prepare the pull tube GOA-1104PRD



Automatic Pocket Hemmer Machine GOA-3883-PL-DK



Automatic Button Riveting Machine GOA-170A



Automatic Pocket Pattern Sewing Machine GOA-1010CH

Computerized Pattern Lockstitch Sewing Machine

GOA-2020A-H



Machine Features

With automatic thread trimmer, auto backtacking, auto needle stop position, one-touch for reverse stitching, needle compensation, auto presser foot lifting functions.

Machine Parameters

Needle Bar Stroke	30.7mm
Stitch Length	5mm
Rotary Hook	Brand Hook
Presser Foot Lifting	5.5mm-13mm
Max. Speed	5000RPM
Power	550W
Power Supply	AC 220V 50Hz
Dimensions	1200mm×550mm×1350mm(L×W×H)

Application

Suitable for men's, women's, children's wear and other fabrics, also suitable knits, silk, PU leather & denim, etc.

High-speed Double-needle Lockstitch Sewing Machine With Semi-dry Oil

GOA-8450D-H

Machine Features

1. Needle and feed dog synchronous working, to prevent the material slippage.
2. With double needle direct drive automatic thread trimmer, auto thread wiper, and automatic oil supply functions.

Machine Parameters

Needle	DP×5 11-16#
Needle Gauge	6.4mm
Presser Foot Lifting	7mm-13mm
Stitch Length	5mm
Max. Speed	4000RPM
Productivity	180pcs/hour
Power	550W
Power Supply	AC 220V 50Hz
Dimensions	1200mm×550mm×1350mm(L×W×H)



Application

Suitable for outer coat, uniform wear, jean, bag and decorative sewing products, etc.



Super high speed computer Overlock sewing machine (3 line)

GOA-F1-3QZ-H



Machine Features

1. With auto thread trimmer, auto presser foot lifting, auto needle positioning, auto backtacking system, and thread suction after trimming functions.
2. With three light sensors, integrated electronic control (with voice), USB charging feature.

Machine Parameters

Needle	DC×27 11#
Number of Needle	1
Number of Thread	3
Over Edge Width	4mm
Over Edge Stitch Length	3.8mm
Presser Foot Lifting Height	5.5mm
Max. Speed	6500RPM
Power	550W
Power Supply	AC 220V 50Hz
Dimensions	1200mm×550mm×1350mm(L×W×H)

Application

Suitable for edge overlock sewing of workwear, pajamas and sportswear, etc those are with medium heavy fabric.



Super high speed computer Overlock sewing machine (5 line)

GOA-F1-5QZ-H

Machine Features

1. With auto thread trimmer, auto presser foot lifting, auto needle positioning, auto backtacking system, and thread suction functions.
2. With three light sensors, integrated electronic control (with voice), USB charging feature.

Machine Parameters

Needle	DC×27 14#
Number of Needle	2
Number of Thread	5
Over Edge Width	5mm
Over Edge Stitch Length	3.8mm
Presser Foot Lifting Height	5.5mm
Max. Speed	6500RPM
Power	550W
Power Supply	AC 220V 50Hz
Dimensions	1200mm×550mm×1350mm(L×W×H)



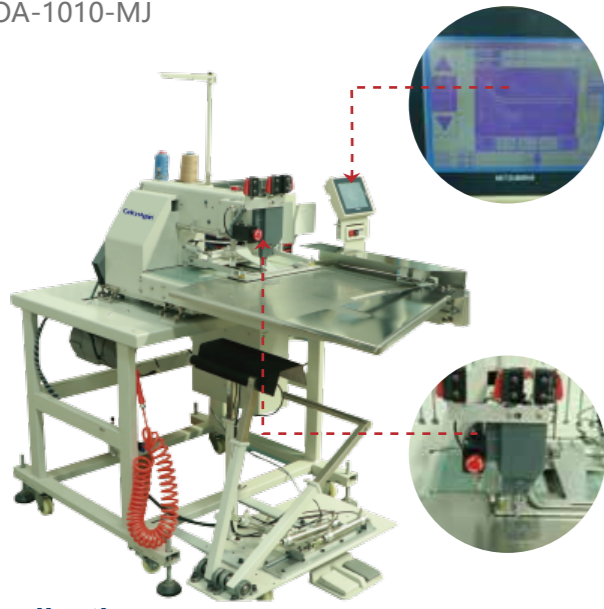
Application

Suitable for edge overlock sewing of workwear, pajamas and sportswear, etc those are with medium heavy fabric.



Automatic Placket Machine

GOA-1010-MJ



Application

Suitable for placket, front fly J stitch of jeans, casual wear, and workwear.



Machine Features

1. Automatic material feeding, sewing and material collection.
2. Stitch length can be freely set per section.
3. With touch screen, can set the front fly J stitch pattern, fulfil any clothing requirement.
4. Max. sewing area: 258x130mm.

Machine Parameters

Speed	2700RPM
Needle	DP×5/DP×17
Pattern Data Storage	999 patterns
Sewing Area	258mm×130mm
Lubrication	Semi-oil
Language	Chinese and English
Productivity	360pcs/hr.
Power	750W
Air Pressure	0.4Mpa
Power Supply	AC 220V 50Hz
Dimensions	1600mm×1200mm×1300mm(L×W×H)

Belt-loop Sewing Machine With Cutter

GOA-2000C-SD



Application

Suitable for medium heavy material, heavy duty jeans and casual pants.



Machine Features

Belt-loop (width: 8mm-12mm) sewing with auto material feeding and cutting.

Machine Parameters

Model	GOA-2000C-SD
Presser Foot Height	8mm
Speed	4500RPM
Sewing Stitch	Double Needle Chainstitch
Needle Gauge	1/4" 3/16"
Needle	UY128GAS 16#
Stitch Width	8-12MM
Productivity	700pcs/hr.
Power	750W
Power Supply	AC 220V 50Hz
Dimensions	1200mm×550mm×1350mm(L×W×H)

Machine Features

1. With steel structure table and lower roller wheels, easy to move within working area.
2. Machine running stably, low noise and less vibration.
3. With pneumatic lifting presser foot, pneumatic lifting puller, needle cooling, and auto suction after thread trimming.
4. Built-in puller drive mechanism, increase of the machine speed.
5. Pneumatic diagonal widened puller, convenient for the puller to move up & down stably, thread feeding smoothly.
6. Machine lubrication: the bottom arm with oil storage lubrication, machine head with upper spindle oil pump auto lubricate.

Machine Parameters

Stitch	Chain stitch
Speed	4300RPM
Feeding Speed	2.6-4.8mm/needle
Number of Needle	2/3 Needle
Needle	TV×5 21#
Productivity	120pcs/hr.
Power	750W
Air Pressure	0.4Mpa
Power Supply	AC 220V 50Hz
Dimensions	850mm×680mm×1180mm (L×W×H)

Automatic Feed-off The Arm Machine

GOA-9588



Application

Suitable for joint sewing of jeans, casual wear, workwear, shirts, trousers hems and sleeves.



Chainstitch Waist Band Machine

GOA-1104PRD



Machine Features

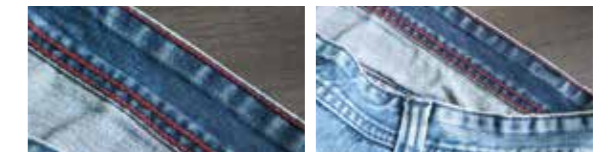
1. Needle feed function, can make stitching looked tidy.
2. Direct drive, automatic lifting presser foot, free needle position.

Machine Parameters

Model	GOA-1104PRD
Speed	4000RPM
Number of Needle	4
Needle	DV×57
Stitch length	2.1-6.4mm
Needle Bar Stroke	32mm
Material feeding	Needle feed
Needle Gauge	32/35/38/42/45 adjustable, max: 67mm
Productivity	180pcs/hr.
Power	550W
Power Supply	AC 220V 50Hz
Dimensions	1200mm×550mm×1350mm(L×W×H)

Application

Suitable for medium heavy to heavy duty casual pants and jeans waistband sewing.



Double Needle Belt-loop Attaching Machine

GOA-254



Machine Features

1. Automatic belt-loop cutting, auto corner folding and sewing.
2. Multiple processes can be completed by one person, and continuous sewing.
3. Double needle high speed, 1pc complete in 12 sec. (with 5 belt-loops).
4. The efficiency is 5 times that of ordinary machines.
5. Automatic material collecting system, no technical operator required.

Machine Parameters

Speed	2500RPM
Backtacking Length	5-22mm
Backtacking Width	1-3.5mm
Needle Width Adjust	Manual
Press Foot Height	21mm
Efficiency	180pcs/hr
Power	750W
Power Supply	AC 220V 50Hz
Dimensions	1200mm×550mm×1350mm(L x W x H)

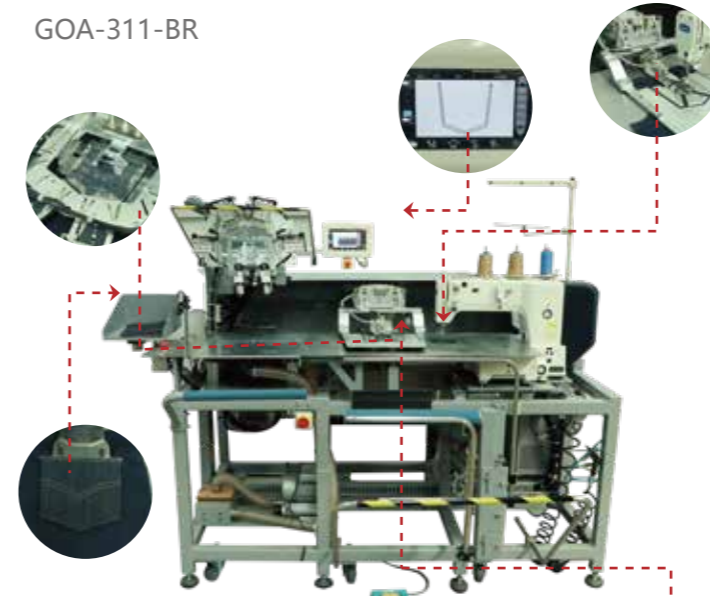
Application

Suitable for belt-loop attaching of jeans, work clothes and etc.



Automatic Non-ironing Pocket Machine

GOA-311-BR



Application

Suitable for patch pocket of various shapes of jean, casual wear and work clothes.



Machine Features

1. No need hot ironing, one-time sewing by cold lapping mold.
2. Automatic feeding, folding and sewing without intermittent, continuous operation.
3. Automatic material collecting system, no skill required.

Machine Parameters

Sewing Speed	2700RPM
Needle Type	DP×17
Sewing Length	200mm
Sewing Width	300mm
Oil Supply	Micro Oil
Language	Chinese and English
Capacity	100pcs/hour
Power	750W
Air Pressure	0.5Mpa
Voltage	AC 220V 50Hz
Dimensions	2000mm×1250mm×1550mm(L×W×H)

Automatic Pocket Hemmer Machine

GOA-3883-PL-DK

Machine Features

1. No hemming exposed, adjustable hemming width, different needle gauge can be replaced.
2. No technical operator required.
3. Productivity: 8000pcs completed in 10 hours.
4. 3 times efficiency of traditional process, can save up to 2 operators.

Machine Parameters

Process	Pocket Hemmer
Speed	4000RPM
Hemming Width	1/4"(6.4mm)
Stitch Length	0.9mm-4mm
Needle	TV*7
Crimping Width	Adjustable
Presser Foot Height	10MM
Optional Needle Gauge	5/16; 3/8; 1/2
Productivity	800pcs/hr.
Power	750W
Air Pressure	0.4Mpa
Power Supply	AC 220V 50Hz
Dimensions	1300mm×1000mm×1250mm(L×W×H)



Application

Suitable for pocket hemmer of jeans, casual wear and workwear, etc.



Machine Features

1. Strong stability: Original Mitsubishi sewing head and electric control, perfect combination with the added modification optimization function.
2. Stretch presser foot: Avoid sewing out of position.
3. Easy operation: Touch screen, any patterns can be easily designed according to graphic instructions.
4. Multi purpose: Patterns can be changing within 100mm x 100mm.

Machine Parameters

Model	GOA-1010CH
Sewing Speed	Max 2700RPM
Needle Type	DP×5/DP×17
Pattern data storage	999 pcs.
Capacity	360pcs/hour
Oil Supply	Micro Oil
Language	Chinese and English
Power	750W
Air Pressure	0.4Mpa
Voltage	AC 220V 50Hz
Dimensions	1300mm×900mm×1200mm(L×W×H)

Automatic Pocket Pattern Sewing Machine

GOA-1010CH



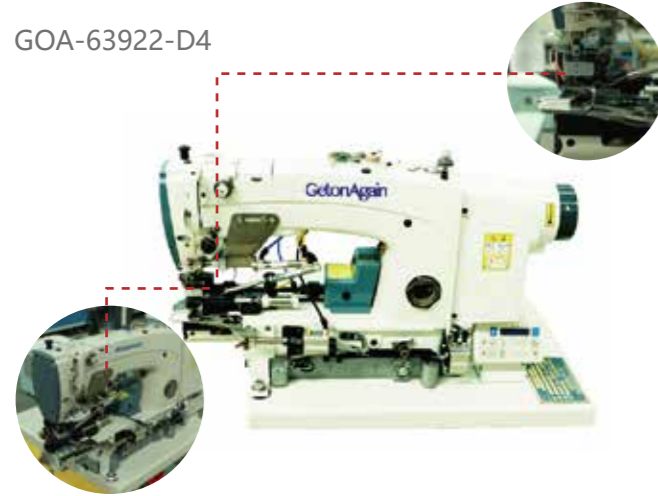
Application

Suitable for any patterns sewing within the range of 100mm x 100mm.



Automatic Bottom Hemming Machine

GOA-63922-D4



Machine Features

Lock stitch cylinder base plate, synchronous and continuous delivery of upper and lower rollers behind the needle.

Machine Parameters

Model	GOA-63922-D4
Sewing Speed	4000RPM
Cylinder Hemming Width	12.7mm
Cylinder Base Plate Circumference	200mm
Needle Type	UY 180GVS
Feeding Mode	Top and bottom roller and needle compound feeding mode
Capacity	240pcs/hour
Power	750W
Air Pressure	0.4Mpa
Voltage	AC 220V 50Hz
Dimensions	970mm×630mm×1210mm(L×W×H)

Application

Suitable for sewing trousers, jeans and other work clothes and casual clothes.



Machine Features

1. Max. sewing speed of 2500RPM improves the production efficiency a lots.
2. Beautiful stitches, can sew high quality products.
3. The cloth can be tiled with the wide machine cavity.
4. Simple operation panel.
5. Equipped with a sunken head, reduces operator fatigue.
6. The shape of the buttonhole is controlled by computer program and can be adjusted freely.

Machine Parameters

Sewing Length	Round hole 8-60mm; Straight hole 5-60mm
Presser Foot Length(Standard)	30mm
Sewing Speed	1000-2500RPM
Shim Length (Standard)	30mm
Stitch Length	0.5-2.2mm
Zigzag Sewing Width (default)	1.5-3.5mm
Streamline Bar-tacking Length	0-20mm
Presser Foot Height	12-16mm
Needle Type (default)	DO×558NM80-120
Capacity	700pcs/hour
Power	750W
Air Pressure	0.5Mpa
Voltage	AC 220V 50Hz
Air Consumption	43.2L/min
Dimensions	1300mm×870mm×1200mm(L×W×H)

Automatic Eyelet Button Holing Machine

GOA-9820



Application

Suitable for different materials eyelets sewing such as suits, overcoats, work clothes and trousers, etc.



Bartack Sewing Machine

GOA-1900B-JS



Application

Suitable for the reinforcement of pocket mouth, trouser loop, button hole ends, straps and tensile parts of various sewn products.



Machine Features

1. Sewing area of 30mm(Y) x 40mm(X), can sew different shape of bar tacking.
2. Besides previous bartack shapes, there are more than 50 kinds of sewing patterns like half moon bartack, round bartack and chrysanthemum keyhole, etc.
3. New pattern input mode with USB port on the side of the operation panel.

Machine Parameters

Sewing Method	Single needle lockstitch sewing
Sewing Area	30mm×40mm
Stitch Length	0.05mm-12.7mm
Presser Foot Height	Max. 17mm
Sewing Speed	3200RPM
Max Storage	210 000 stitches
Capacity	130pcs/hour
Power	550W
Air Pressure	0.4Mpa
Voltage	AC 220V 50Hz
Dimensions	1200mm×550mm×1350mm(L×W×H)

Automatic Lockstitch Sewing Machine with Thread and Knife

GOA-5200D

Machine Features

1. Suitable for sewing all kinds of shirts and suits or similar garments, especially collar and front.
2. Side cutting device makes sewing and trimming completed at one time, greatly improved work efficiency.
3. It can be used a a normal sewing machine when turning up the cutting button and stopping all the cutting actions.
4. The cutter is in sync with the teeth structure.
5. With electronic thread clamp, built in automatic presser foot lifting function.

Machine Parameters

Needle Type	DB×1 14#
Needle Bar Distance	30.7MM
Stitch Length	5MM
Presser Foot Height	7-15MM
Rotary Hook	Horizontal small rotary hook
Max Speed	5000RPM
Power	550W
Voltage	220V
Dimensions	1200×550×1350(L×W×H)



Automatic Button

GOA-170C/GOA-170A

Attaching/Riveting Machine

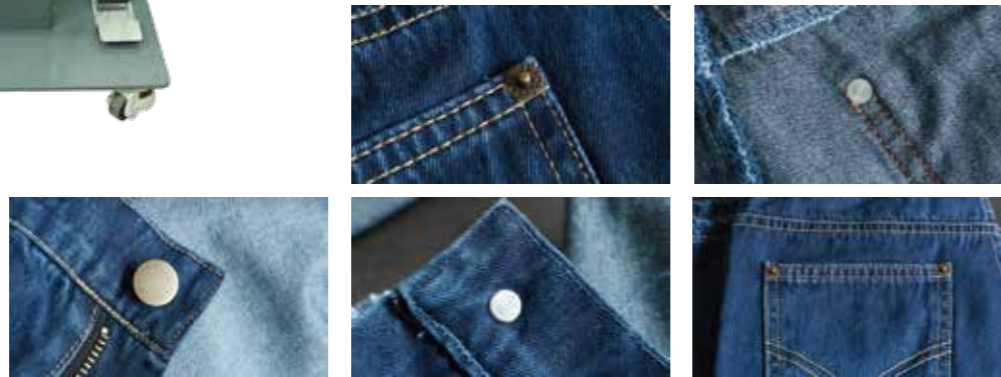


Machine Features

1. Power saving, high efficiency, stability, wide application range, easy operation.
2. Machine is computer controlled and HMI touch screen panel operation, more stable performance and safer operation.
3. Both two button plates feeding at the same time, foot-pad switch control, can adjust the button riveting quickly and safely, and improve the sewing quality and production efficiency which is 3-6 times of manual work.

Application

Suitable for button attaching in clothing, shoes and leather, like snap button, nails, jeans button and pocket button, etc.



Machine Parameters

Model Name	GOA-170C/GOA-170A			
Model	Model A	Model B	Model C	Model D
Button Outer Diameter	Ø12-20mm	Ø10-14mm	Ø9-11mm	Ø8-13mm
Button Thickness	1.5-5mm	1.5-4mm	0.2-1.5mm	0.2-2mm
Capacity	1200pcs/hour			
Power	750W			
Air Pressure	0.4Mpa			
Dimensions	1200mm×870mm×1300mm(L×W×H)			

Automatic Trousers Presser Machine

GOA-TKJ-128B

(Steam Integrated Machine)

Machine Features

1. Built-in steam furnace, short pipe, keeping the steam temperature and dry, avoid reducing the ironing effect because of the steam temperature dropping and steam moisture increasing.
2. Using the temperature of the furnace body, the hot air is generated into the pants for preheating and then steam spraying for ironing, which not only saves the electric energy needed in the heating process, but also avoids the phenomenon that the pants are damp when the steam meets the cold air during the steam spraying process, and away from becoming moldy after packaging.
3. Automatic clamping, time saving and labor cost saving.
4. PLC program controller and touch screen control system; Capacity count function; Powerful hot air blowing function (blowing time adjustable) and Automatic steam injection function (steam injection time adjustable).
5. Equipped with trousers waistband front fly fixing device, trousers waist side clamping device (adjustable width and tension), trousers leg pull-down clamping device (adjustable height and tension). All clamping parts are equipped with steam jet to realize the ironing effect.



Application

Suitable for jeans, casual pants, pants and shorts, children's pants.



Machine Parameters

Model	GOA-TKJ-128B
Capacity	180pcs/hour
Compressed Air Consumption	20kg/h
Steam Consumption	30kg/h
Power	Blower: 800W Total power: 13500W
Air Pressure	0.3-0.7Mpa
Voltage	AC, 3Phase 380V 50Hz
Dimensions	700mm×1060mm×1930mm(L×W×H)



Automatic Folding Packaging Machine (with sealing)

GOA-4350B



Machine Features

1. Machine realizes the continuous operation of garment automatic folding, automatic packing into bags and automatic sealing.
2. Improve the standard degree of garment folding and folding packaging efficiency.
3. Do not apply to flat pockets and pillow plastic bags.
4. Length and width of the folded clothing can be adjusted and set arbitrarily within the allowable value range.
5. Machine can automatically detect the length of clothing. When the clothing size is different, the machine can intelligently identify and automatically fold the corresponding first folding length to ensure that the folded length is the same, so that garment of different sizes can be folded into the same size for bagging without changing plastic bags.
6. Machine can automatically calculate the number of completed pieces and set multiple alarm functions.

Application

Suitable for PE/PP/OPP self-adhesive envelope plastic bags, the minimum width of the plastic bag is 26CM.



Machine Parameters

Model	GOA-4350B		
Minimum Clothing Width	350mm	Minimum Size Of Plastic Bag	280mm × 260mm L × W
Maximum Clothing Width	900mm	Maximum Size Of Plastic Bag	520mm × 420mm L × W
Minimum Clothing Length	400mm	Production Capacity	500 pcs/hour
Maximum Clothing Length	800mm	Occupation Size	5100mm×1050mm×1500mm
Minimum Width After Folding	230mm	Power	800W
Maximum Width After Folding	380mm	Air Pressure	0.6Mpa
Minimum Length After Folding	200mm	Voltage	220V
Maximum Length After Folding	400mm		

Note: 1. Each assembly line has about 30 people, and the daily output is about 1,000;
2. The daily target output of 4 assembly lines is about 4000.

Serial number	Machine Name	Model	Unit	Set/Group	Total for 4 Groups
1	Computerized Pattern Lockstitch Sewing Machine	GOA-2020A-H	Set	13	52
2	Automatic Lockstitch Sewing Machine with Thread and Knife	GOA-5200D	Set	2	8
3	High-speed Double-needle Lockstitch Sewing Machine With Semi-dry Oil	GOA-8450D-H	Set	3	12
4	Richpeace Automatic Placket Machine	GOA-1010-MJ	Set	0.3	2
5	Super Hith Speed Computer Overlock Sewing Machine	GOA-F1-3QZ-H	Set	2	8
6	Super Hith Speed Computer Overlock Sewing Machine	GOA-F1-5QZ-H	Set	3	12
7	Automatic Feed-off The Arm Machine	GOA-9588	Set	1	4
8	Chainstitch Waist Band Machine Need the customer to prepare the waist band folder	GOA-1104PRD	Set	1	4
9	Belt-loop Sewing Machine With Cutter	GOA-2000C-SD	Set	0.3	1
10	Automatic Pocket Hemmer Machine (Chain)	GOA-3883-PL-DK	Set	0.3	1
11	Automatic Non-ironing Pocket Machine (Customers are required to provide pocket size drawings when ordering equipment Making molds, each machine comes standard with 1 size mold)	GOA-311-BR	Set	1	4
12	Automatic Bottom Hemming Machine	GOA-63922-D4	Set	1	3
13	Double Needle Belt-loop Attaching Machine	GOA-254	Set	1	3
14	Bartack Sewing Machine	GOA-1900B-JS	Set	1	4
15	Automatic Eyelet Button Holing Machine	GOA-9820	Set	0.1	1
16	Automatic Pocket Pattern Sewing Machine	GOA-1010CH	Set	0.3	2
17	Automatic Button Attaching Machine (When ordering equipment, customers need to provide button making molds)	GOA-170C	Set	0.2	1
18	Automatic Button Riveting Machine (When ordering equipment, customers need to provide button making molds)	GOA-170A	Set	0.2	1
19	Automatic Trousers Presser Machine (Steam Integrated Machine)	GOA-TKJ-128B	Set	1	3
20	Automatic Folding Packaging Machine (with sealing)	GOA-4350B	Set	1	1

Note: According to the specific process requirements of different customers, the equipment ratio will be adjusted accordingly.