

全自动拷四边缝纫机 (圆角)

Automatic 4-Side Overlock Machine (Fillet)

- ✓ 自动识别辅料边缘, 实现快速换产
- ✓ 降低工人技能依赖度及劳动强度
- ✓ 一人可操作2台机器, 提高生产效率
- ✓ 成品规范, 一致性好

- ✓ *Automatically recognize the edge of auxiliary materials to achieve rapid production changeover*
- ✓ *Reduce the dependency on worker skills and labor intensity*
- ✓ *One person can operate two machines, improving production efficiency*
- ✓ *Finished products are standardized with good consistency*

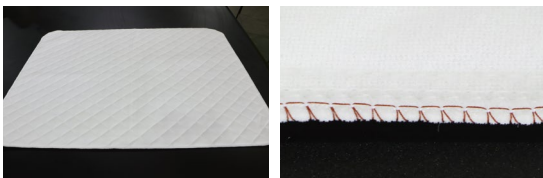


机器特点

- 包缝机头, 线迹美观, 自动裁边, 确保缝制的稳定性。
- 机头自动供油, 减少维护频次, 延长机器使用寿命。
- 自主研发全新Ⅲ型电脑控制系统, 友好的人机界面, 触控灵活, 存储量大, 确保整机的高精度运行。
- 环形输送带搭配旋转机械手, 自动完成产品的拷四边缝制。

Features

- The overlocking machine head features beautiful stitching and automatic edge trimming, ensuring the stability of sewing.
- The machine head is automatically lubricated, reducing maintenance frequency and extending the service life of the machine.
- Model III computer control system, friendly HMI, flexible touch control and large storage capacity to ensure the highprecision operation of the whole machine.
- The ring conveyor belt is equipped with a rotating manipulator to automatically complete the sewing of four sides of the product.



适用范围

适用于毯子、垫子等薄料产品的自动拷边。

Application

Suitable for automatic overlocking of thin materials such as blankets and cushions.

全自动拷四边缝纫机 (圆角) Automatic 4-Side Overlock Machine (Fillet)

机器参数 Parameters

推荐型号 Recommend Model	GOAAS-LM-O4E-1-2000×2000-O2*5-CN-3P380
缝制产品最大尺寸 Max. sewing product size	2000mm×2000mm (L×W)
最小切边尺寸 Min. trimming size	10mm
拷边圆角半径 Edge overlocking radius	80mm
直线最大缝制速度 Max. straight sewing speed	6500RPM
转圆角最大缝制速度 Max. sewing speed	1000RPM
针步范围 Stitch length range	2-4mm
线迹类型 Stitch pattern/type	包缝线迹 Overlocking stitch
缝制产品最大厚度 Max. thickness of sewing product	≤15mm
生产节拍 Production cycle time	60秒一床 60 seconds per blanket
机针 Sewing machine needle	9-14#
剪线方式 Thread trimming method	斩刀剪线 Blade cutting for thread trimming
电源 Power supply	三相380V Three-phase 380V
气压 Air pressure	0.5MPa 3升/分钟 0.5MPa, 3 L/min
占地尺寸 Machine Size	4200mm×3000mm×1800mm (L×W×H)

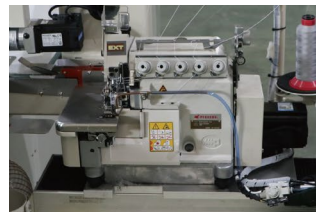
主要配置 Machine configuration



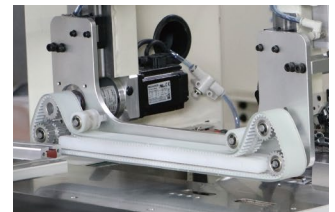
Ⅲ型控制系统
Type III Control System



旋转机械手
Rotary manipulator



包缝机头
Overlocking machine head



同步环带
Synchronous belt

天津市再登科技有限公司

地址: 天津市宝坻区朝霞街道海滨商贸中心1-108

400-166-8581

东莞分公司: 东莞市厚街镇莞太路桥头路段西412号

山西分公司: 山西转型综合改革示范区学府产业园长治路227号高新国际A座1101室

再登科技(香港)有限公司: 香港九龍新蒲崗大有街1號勤達中心20楼1-5室

中国台湾办事处: 臺灣新北市三重區重新路5段609巷20號5樓之4

Tianjin GetonAgain Technology Co., Limited

Address: No.1-108, Haibin Commercial Center, Zhaoxia Street, Baodi District, Tianjin, China Tel: +86 22-2252 6200

Email: sales@getonagain.com www.GetonAgain.com

Branch Office: India | Bangladesh | Pakistan | Vietnam | Germany |

France | Mexico |