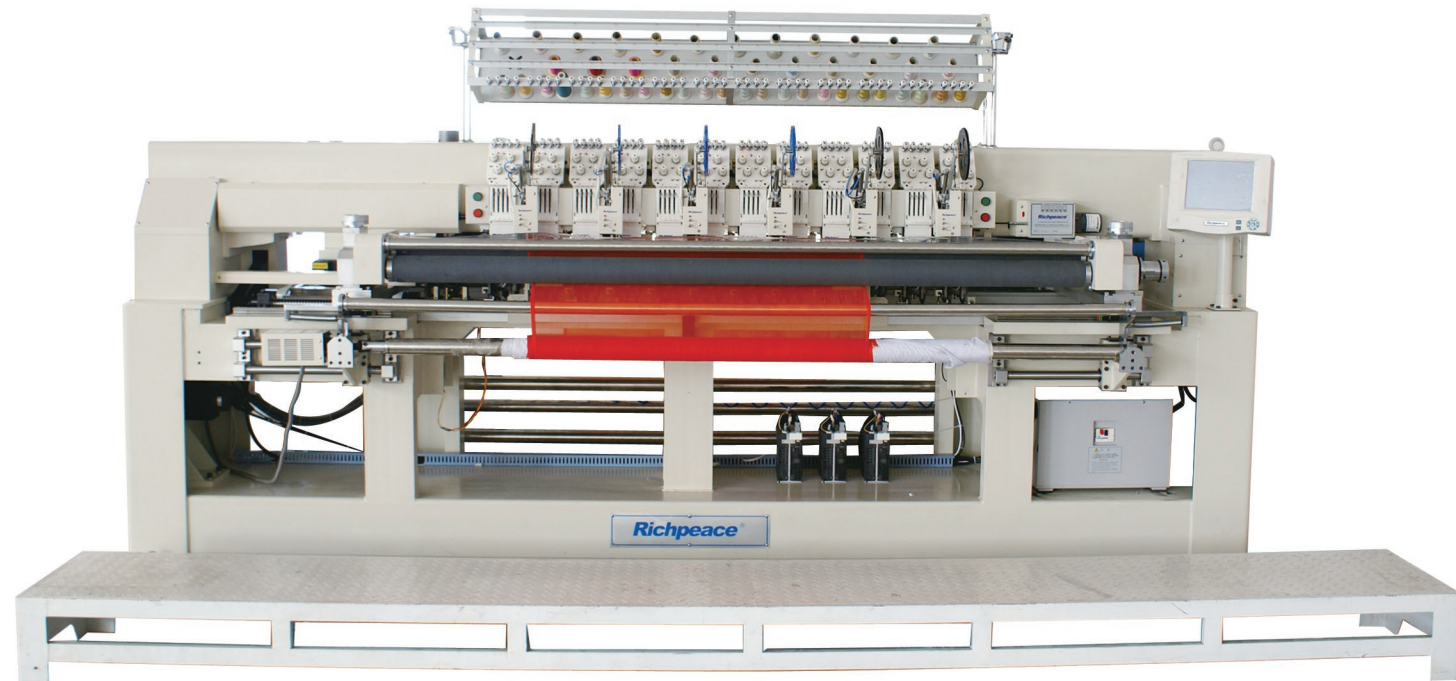
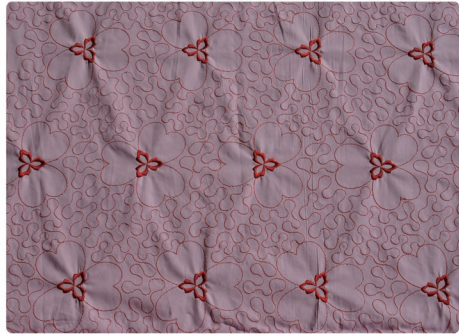


富怡电脑无框卷式绣花机

Richpeace Computerized Roll-to-Roll Embroidery Machine



主要特性与功能

Main Features & Functions

- ※ 真正无框，卷式刺绣
Real Roll-to-Roll Embroidery Machine, work without frame or clamps.
- ※ 连续在卷布上刺绣，更省时省力
Continuously embroider on roll fabric, save time and manpower.
- ※ 适合各种单层布料刺绣，薄料纱料
Perfect embroidery on various of fabric.
- ※ 可隔头刺绣，花样更大
Alternative head operation for bigger designs.
- ※ 自动换色，自动剪线
Automatic color change. Automatic thread trimming.
- ※ 亮片装置可选，花样更具创意
Optional sequin devices able to create fantastic design.
- ※ XY伺服电机,保证机器高速运转与精确绣做
Two servo motor offer power to X/Y-axis to guarantee machine working high speed and move precision.
- ※ 彩色液晶显示，触摸屏操作，图形化界面，生动直观
Full color LCD. Touch screen& vivid display.

适于：各式衣服，窗帘，薄纱等单层面料的连续刺绣。

Production variety: garments, curtain, gauze, etc. Especially for continuous embroidered fabrics products.

参 数

Specifications

机型 Model	RPQE-SL-SFE-412-300×1485-B-4ND(135)-VR2-LSS-3P380	
头数 Number of head	12	
针间距 Needle Space(mm)	135	
机头颜色 Thread color per head	4	
针排数 Number of Needle Row	1	
刺绣面积 Emb area (mm)	X direction(single pattern)	135/270
	X向(单个花型)	
	Whole width in X 全部面宽	1620
外形尺寸 Dimensions(mm)	Length(A) 长	3680
	Width(C) 宽	1500
	Height(B) 高	1940
绗缝速度 Speed	max:800rpm	
针迹长度 Length of stitch	In binary way:0.15-12.4mm	
储存针数 Saving stitch number	二进制: 0.15-12.4mm 1.3000.000stitches 130万针	
花样储存容量 Capacity for storing patterns	500patterns 500个花样	
电压 Voltage	Three-phase:380V 50Hz 三相: 380V 50Hz	
额定功率 Power	4.5-5kw	