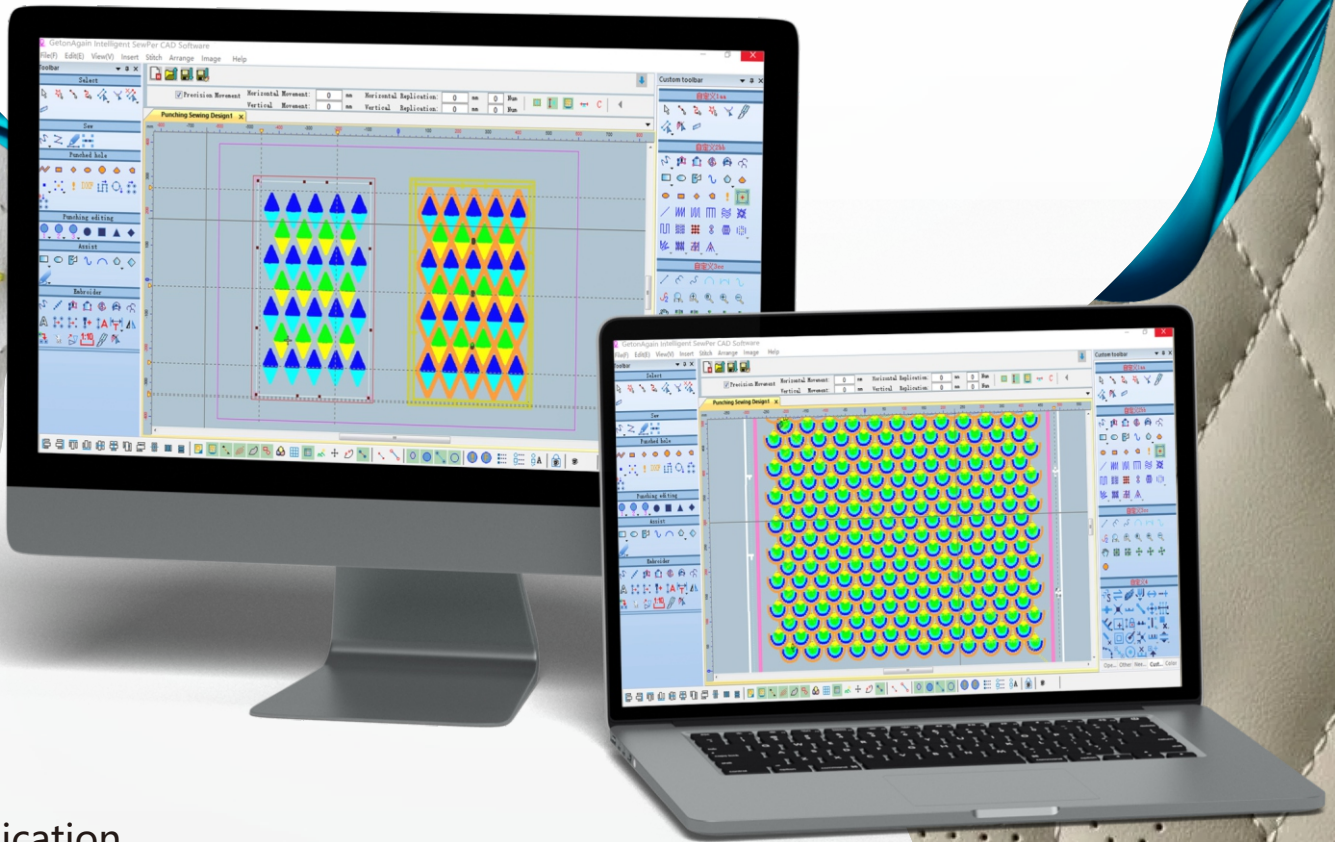


再登

GetonAgain®

GetonAgain Intelligent SewPer CAD system



Application

GetonAgain Intelligent SewPer CAD system is a professional pattern design software functioned with perforation, sewing and embroidery, which is widely used in the leather industry, such as leather, PU and lint composite materials.

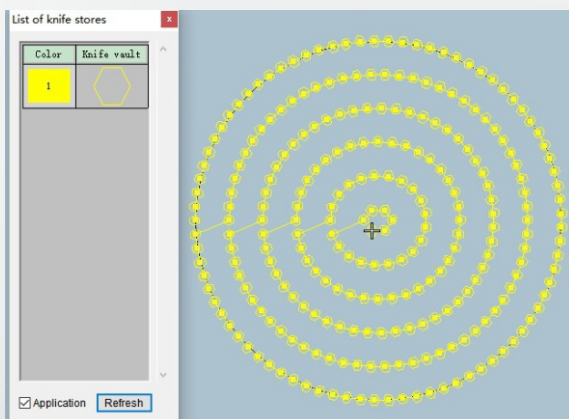
Intelligent icons, easy to learn and use.

Suitable for pattern design making for various perforation machine, perforation and sewing machine, or integrated perforation sewing and embroidery machine.

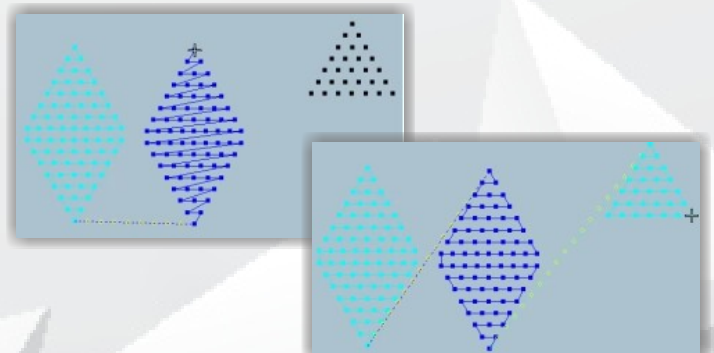
Features

Preview function for Special-shaped hole knife shape

display: Knife shape of special-shaped holes can be previewed directly in the software, so as to better grasp the perforation shape and direction position.

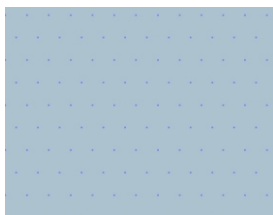


Copy & paste function for Stitch path: Copy and paste stitch path for circular pattern design, greatly improved work efficiency.

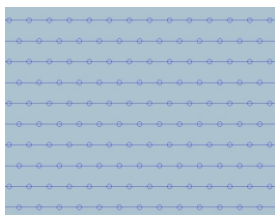


Various perforation scanning methods:

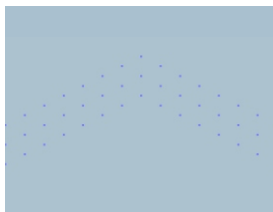
Support various scanning methods on vertical, horizontal, circular, regional, automatic line, split and etc. to meet fast pattern design making of different shapes.



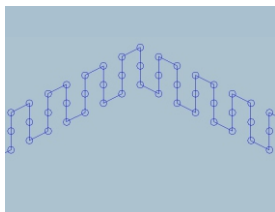
Before Horizontal scan



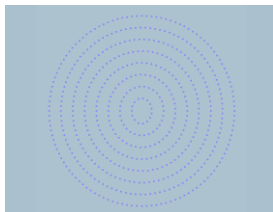
After Horizontal scan



Before Vertical scan



After Vertical scan

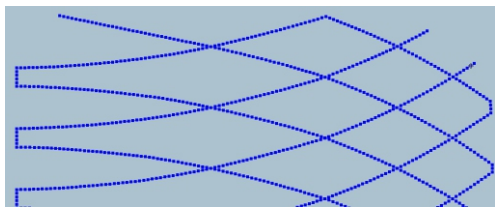


Before Circular scan

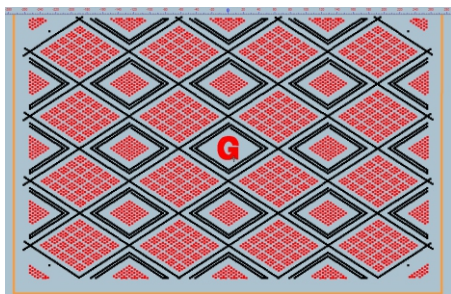


After Circular scan

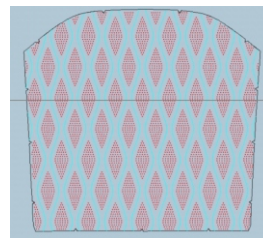
Sewing function: Defined stitch length, intelligent back stitches, and perfectly combined with perforation and embroidery functions.



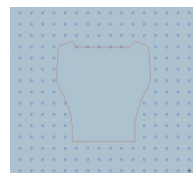
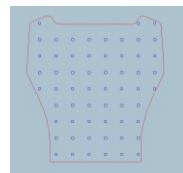
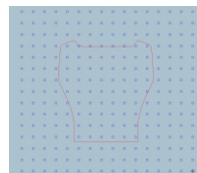
Embroidery function: Various embroidery stitching, and perfectly combined with perforation and sewing functions.



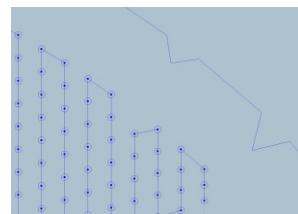
DXF file Reading: Support DXF file; it can be pre-edited, and automatically converted into stitch.



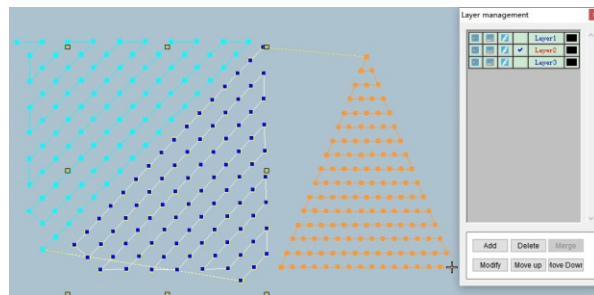
Stitch area deletion function: Edit the selected closed loop area, the aperture inside and outside the area can be deleted.



Intelligent stitch editing function: Provide a variety of stitch editing tools to add, delete, move, rotate and other editing actions for the single stitch or parts of multi-stitch to achieve the perfect pattern design.



Object layers design function: Design to different layer objects.



Automatic time statistics: Automatic statistics of perforation completion time.

