



**Richpeace**<sup>®</sup>

# Richpeace Triple Galvanometer Laser Cutting Machine

RPLC-NM-S-3-1500×500-B-TF-MC300-NA-3P380



## Features

1. During the cutting process, the cutting material moves at a constant speed without interruption on the working platform.
2. With laser cutting and engraving function.
3. Single, double and triple galvanometer mirror system can be chosen, the more galvo mirror used, the higher cutting efficiency.
4. Modular with detachable design, easy for transportation.
5. Extremely high cutting accuracy. Max. tolerance is less than 0.1mm.
6. Adopt light weight galvo mirror, the laser beam moves accurately at a high speed cutting, and it can achieve 10G acceleration.
7. With up and down exhaust function, have stronger power to remove the cutting smoke.
8. Equipped with Automatic Feeding device, ensure smoothing and stable delivery of cutting material.

## Configuration



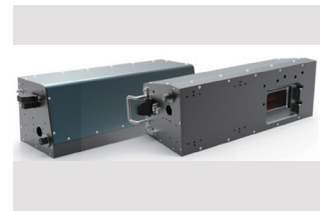
(Auto Feeding device) Automatic fabric spreading, Auto Cutting, release fabric first then feeding, ensure that the fabric is not deformed



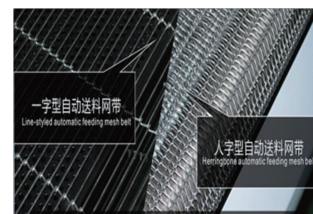
Metallic RF Tube, higher speed and longer lifetime, with perfect cutting quality



Three sets 2.2kW high pressure centrifugal fan, perfect smoke exhaust effect



Dynamic focusing Galvo mirror, better focusing point, bigger cutting area, faster cutting speed



304 stainless steel mesh belt with two types of specification



Intelligent cooling system, with over temperature alarm, flow protection, water level protection and other safety warning functions, to ensure the machine can run smoothly in high temperature and humidity environment

## Application

Apparels, Hometextile, Furniture, Automotive, etc flexible material cutting.



## Parameters

<b>Max. Cutting Area</b>	1500 × Y Direction is unlimited (Other size can be customized)
<b>Machine Dimension</b>	5000mm × 4600mm × 3000mm ( L×W×H )
<b>Max. Speed</b>	3000mm/s
<b>Cooling Method</b>	Water Cooling
<b>Laser Wave Length</b>	10.64μm
<b>Supported File Format</b>	PLT/DXF
<b>Laser Type</b>	Metallic RF Tube
<b>Laser Power</b>	300W(500W/1000W/2000W/3000W is optional)
<b>Single Galvo Mirror Cutting Size</b>	500mm × 500mm (1000mm×1000mm is optional)
<b>Quantity</b>	Three sets Vibrating Mirror ( single or double vibrating mirror are optional )
<b>Voltage Supply</b>	3-phase 380V/50Hz
<b>Accuracy</b>	±0.1mm
<b>Repeat Positioning Accuracy</b>	±0.1mm

## TIANJIN RICHPEACE AI CO., LIMITED

Add: No.6 Baozhong Road,  
Baodi Economic Development Zone,  
Tianjin City, 301800 China

Tel: +86-22-22533456  
Fax: +86-22-22530075  
Email: sales@richpeace.com

