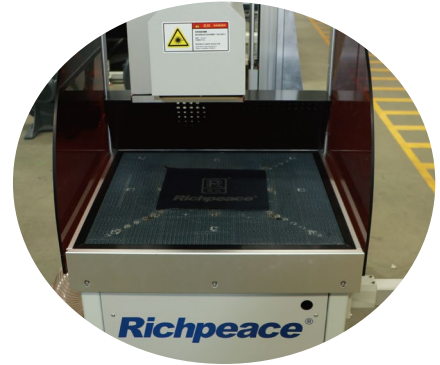




**Richpeace**<sup>®</sup>

# Richpeace Three-axis Dynamic CO2 Laser Marking Machine



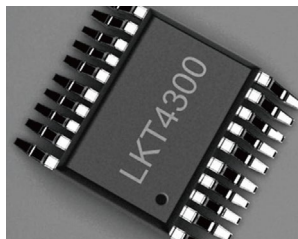
## Features

1. Three-axis dynamic focusing system (three-dimensional dynamic marking system) can be manually/electrically lifting adjustment. 250mm×250mm-500mm×500mm variable working range, smaller working area, higher the accuracy.
2. German made ROFIN CO2 Laser device, at about 20000 hours usage life-time.
3. Fine light spot, high intensity focus.
4. Optional: safety light curtain device.
5. Optional: visible red light preview feature.
6. Able to work continuously.

Model : RPLC-NM-S-1-500×500-C-SLM-RMG175W-NA-3P380V

## Application

Suitable for non-metallic matters, such as cloth, leather bamboo and wooden products, etc. To perform engraving, half-cutting and hollowing crafty works.



## TIANJIN RICHPEACE AI CO., LIMITED

Add: No.6 Baozhong Road,  
Baodi Economic Development Zone,  
Tianjin City, 301800 China

Tel: +86-22-22533456  
Fax: +86-22-22530075  
Email: sales@richpeace.com



## Parameters

<b>Model</b>	<b>RPLC-NM-S-1-500×500-C-SLM-RMG175W-NA-3P380V</b>		
<b>Laser type/Wavelength</b>	Original brand metal RF CO2 laser device / 10.6μm	<b>Working Area</b>	150mm×150mm - 500mm×550mm
<b>Laser output power</b>	≤175W	<b>Spot diameter</b>	0.12-0.2mm (larger the working area, light spot is large)
<b>Cooling system</b>	Water cooling	<b>Working speed</b>	≤3000mm/s
<b>Laser pulse width</b>	≤100ns	<b>Positioning speed</b>	10000mm/s
<b>Power stability ( rms,&gt;4h )</b>	<3%	<b>Working environment</b>	Temperature: 10~35 C , Humidity: 5~85%, no condensation, dustless or less dust.
<b>Laser mode</b>	TEM00 (fundamental mode)	<b>Voltage</b>	3-phase 380VAC/50Hz
<b>Dimensions</b>	2600mm×1500mm×1500mm (L×W×H)		

## Configuration



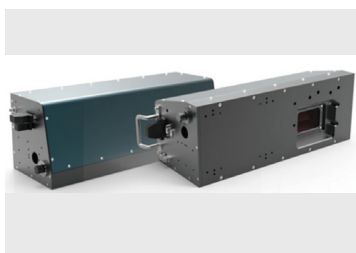
Main body framed with pre-shaped steel structure and welding, nice outlook and high stability.



Equipped with original brand RF CO2 laser device, good quality light spot, uniform light intensity and power, stable output light power. Performance with high stability without maintenance, long life-time and high precision.



Upper and lower double ventilation system, good smoke exhaust effect. With a purifier, it can be environmentally safe.



Professional high-speed 3-axis dynamic scanning galvanometer scanning system, the core components adopt international standard configuration, fine focusing light spot, large working range, processing accuracy in high-speed operation is guaranteed.

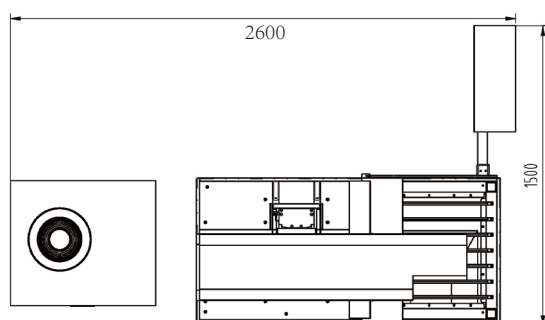


Control software is using MS Windows engineering interface, and compatible with CorelDraw, AutoCAD and other graphical output files format, can be used for various graphics marking, such as text and bar codes. Support a variety of common used graphic formats, such as AI, PLT, DXF, BMP, etc.



Intelligent cooling system, with over-temperature alarm, flow protection, water level protection and other safety alarm alerts to ensure normal operation of the equipment in a high temperature and high humidity environment.

## Production Line Layout



Remarks: Diagram of machine model

RPLC-NM-S-1-500×500-C-SLM-RMG175W-NA-3P380V

Machine working space

2600mm×1500mm×1500mm (L×W×H)