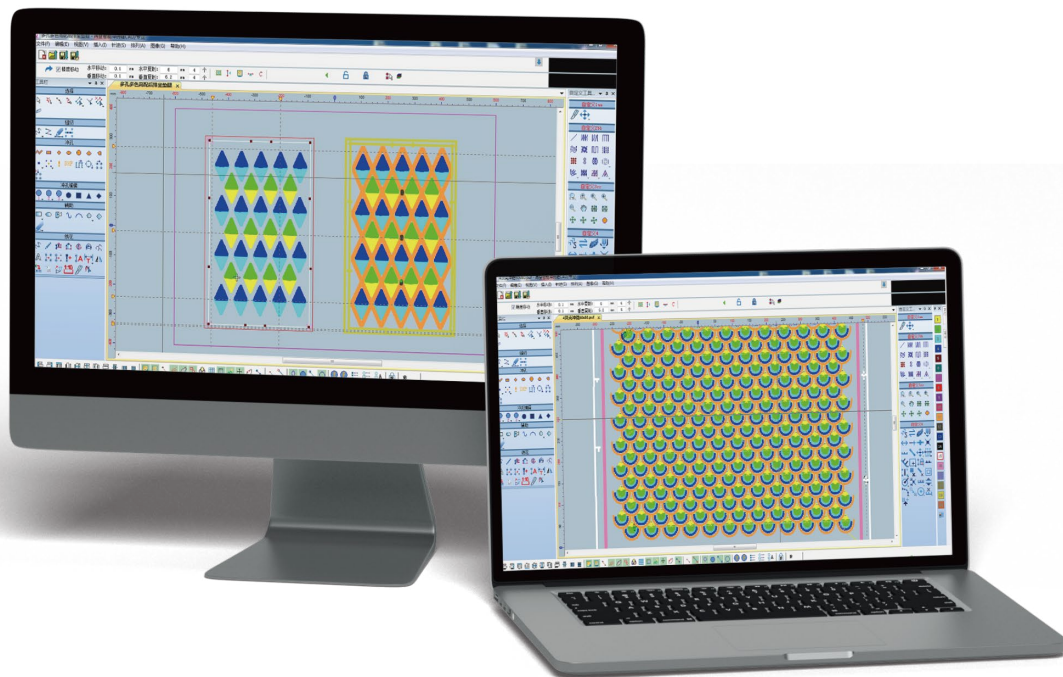


## 再登智能冲绣缝CAD系统V1.0

## GetonAgain SewPerEmb CAD V1.0



## 适用范围

智能冲绣缝CAD系统是一款广泛应用于皮革行业，对真皮、PU、皮棉复合材料的冲孔、冲缝及冲绣缝花型设计的专业制版软件。智能图标，易学易用。适用于各类冲孔、冲缝、冲绣缝一体机的花版制作。

## Application

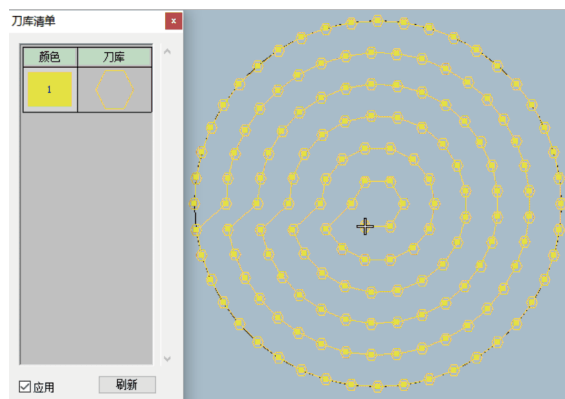
GetonAgain Intelligent SewPer CAD system is a professional pattern design software functioned with perforation, sewing and embroidery, which is widely used in the leather industry, such as leather, PU and lint composite materials. Intelligent icons, easy to learn and use.

Suitable for pattern design making for various perforation machine, perforation and sewing machine, or integrated perforation sewing and embroidery machine.

## 特色功能 Featured Functions

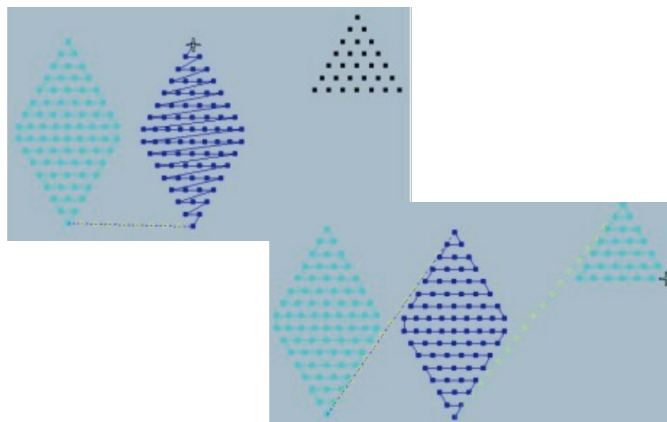
**异形孔刀形显示预览功能：**用户可以在软件中直观地预览异形孔的刀形，从而更好地把握冲孔形状和方向位置。

**Preview function for Special-shaped hole knife shape display:** Knife shape of special-shaped holes can be previewed directly in the software, so as to better grasp the perforation shape and direction position.



**针迹路径复制粘贴功能：**可以对循环花型设计进行复制和粘贴针迹路径，极大提高工作效率。

**Copy & paste function for Stitch path:** Copy and paste stitch path for circular pattern design, greatly improved work efficiency.



## 智能冲绣缝CAD系统

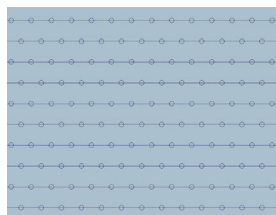
### Intelligent SewPer CAD system

**多种冲孔扫描方式:** 支持垂直、水平、圆形、区域、自动行、分割扫描等多种方式, 满足不同形状花版快速制作。

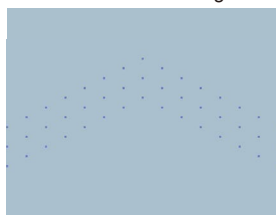
**Various perforation scanning methods:** Support various scanning methods on vertical, horizontal, circular, regional, automatic line, split and etc. to meet fast pattern design making of different shapes.



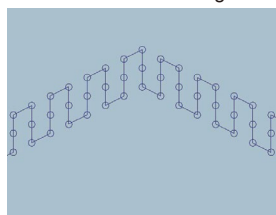
水平扫描前  
Before Connecting



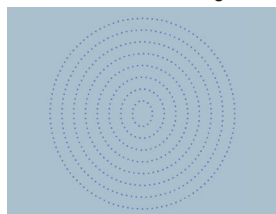
水平扫描后  
Before Connecting



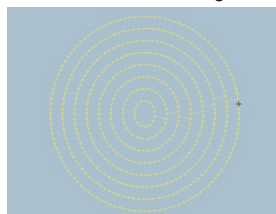
垂直扫描前  
Before Connecting



垂直扫描后  
Before Connecting



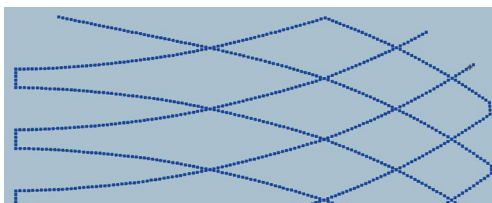
环形扫描前  
Before Connecting



环形扫描后  
Before Connecting

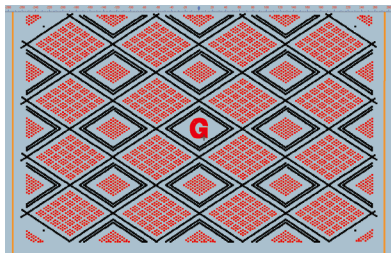
**缝绉功能:** 自定义针迹步长, 智能回针, 并与冲孔和绣花功能完美结合。

**Sewing function:** Defined stitch length, intelligent back stitches, and perfectly combined with perforation and sewing functions.



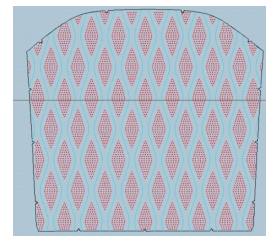
**绣花功能:** 可以实现各种针法刺绣, 并与冲孔和缝绉功能完美结合。

**Embroidery function:** Various embroidery stitching, and perfectly combined with perforation and sewing functions.



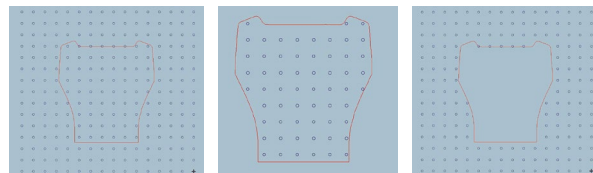
**读取DXF文件:** 读取DXF文件, 并可以对其进行预处理编辑, 自动转化成针迹。

**DXF file Reading:** Support DXF file; it can be pre-edited, and automatically converted into stitch.



**针迹区域删除功能:** 对选中的闭环区域进行编辑, 区域内及区域外的孔径均可删除。

**Stitch area deletion function:** Edit the selected closed loop area, the aperture inside and outside the area can be deleted.



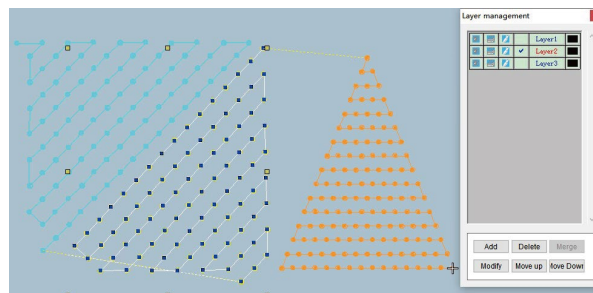
**智能针迹编辑功能:** 提供各种精修针迹工具, 对单针或局部多针进行添加、删减、移动、旋转等编辑动作, 以达到花版的完美设计。

**Intelligent stitch editing function:** Provide a variety of stitch editing tools to add, delete, move, rotate and other editing actions for the single stitch or parts of multi-stitch to achieve the perfect pattern design.



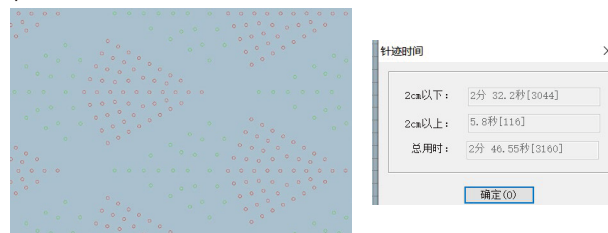
**对象图层设计功能:** 对不同的图层对象进行设计。

**Object layers design function:** Design to different layer objects.



**自动统计用时:** 自动统计冲孔完成时间。

**Automatic time statistics:** Automatic statistics of perforation completion time.



## 深圳市再登软件有限公司

地址: 深圳市南山区南山街道南光社区南海大道  
2221号海王大厦A.B座A座20B  
电话: +86 159 2203 9334 / 183 2246 7900  
邮箱: cad@getonagain.com

## Shenzhen GetonAgain Software Co., Ltd.

Address: Room 20b, block A, Haiwang Building, No. 2221 Nanhai  
Road, Nanshan District, shenzhen, China.  
Tel: +86 159 2203 9334 / 183 2246 7900  
Email: cad@getonagain.com



抖音  
TikTok



Youtube

20250217