



Solutions For GetonAgain CAD Software

cad@getonagain.com

400-655-8662

PRODUCT CATALOG

- GOA Digital Input CAD V1.0
- GetonAgain Garment CAD v2024.1
- SuperNest
- Server SuperNest
- GetonAgain AutoSew CAD V2023.1
- GetonAgain Quilting CAD V1.0
- GetonAgain Emb CAD V1.0
- GetonAgain SewPerEmb CAD V1.0
- GetonAgain WireSew CAD V1.0
- Intelligent Tufting CAD System



Facebook



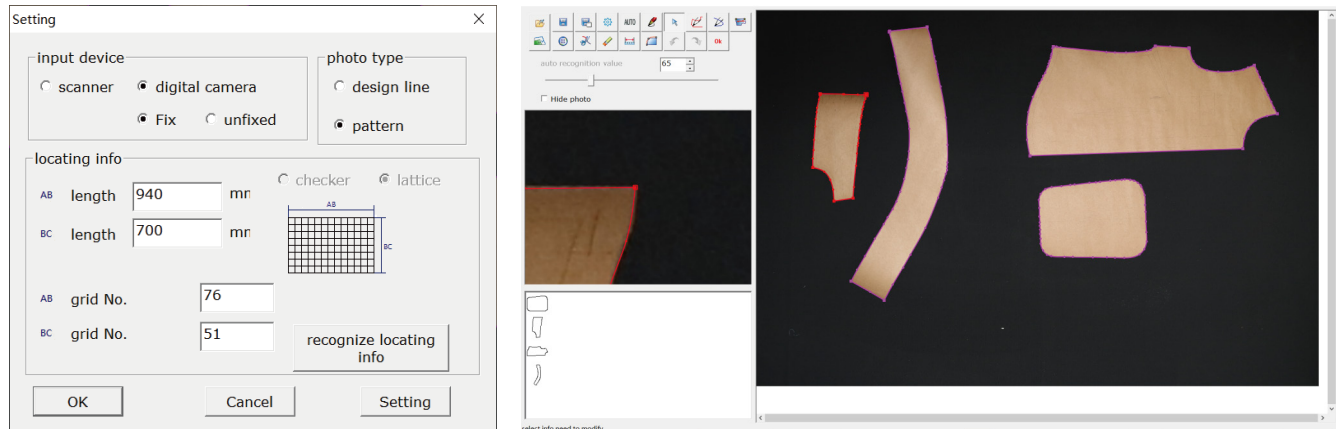
Youtube

Shenzhen GetonAgain Software Co., Ltd.

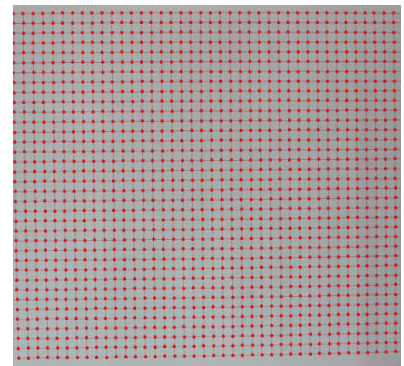
GOA Digital Input CAD V1.0

GetonAgain digital input CAD, quickly import the physical sample or paper pattern into accurate CAD file through two modes: digital camera photography or linear scanning.

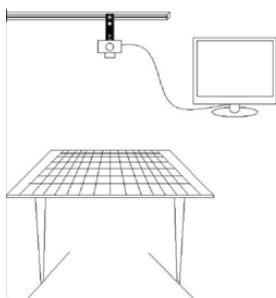
Set input device, basic size and positioning information.



- Import digital photos, automatic recognition, manual fine-tuning.
- Recognize pattern photo to creat pattern e-file for modifying.
- Recognize paper pattern contour through camera digitizer, flatbed scanner or digital camera, accurate and high efficient.



Application Scenario 1



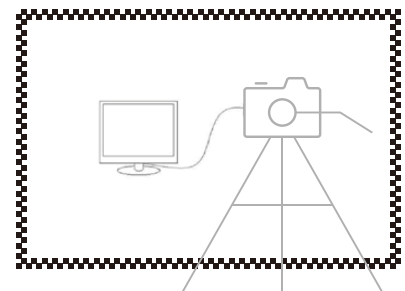
Spread the printed Black/White grid paper on the workbench and fix the camera on the top of paper.

Application Scenario 2



Through the Camera Digitizer, recognize pattern photo to create the pattern CAD file.

Application Scenario 3



Fix the printed grid graph paper on the wall and fix the camera on front side.

Shenzhen GetonAgain Software Co., Ltd.

Address: Room 20B, Block A, Haiwang Building, No. 2221 Nanhai Road, Nanshan District, Shenzhen, China.

Email: cad@getonagain.com

400- 655- 8662



Facebook

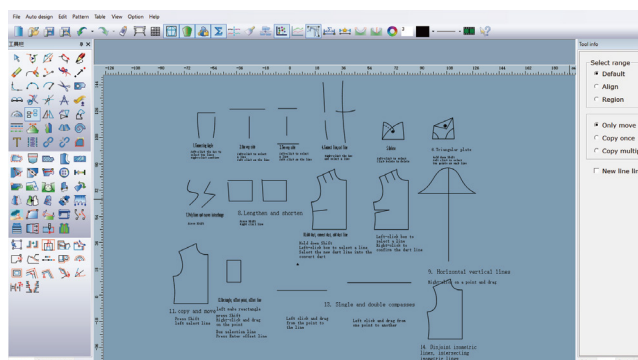


Youtube

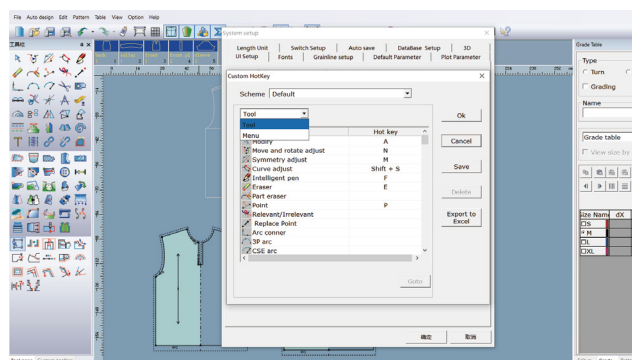
20250611

GetonAgain Garment CAD V2024.1

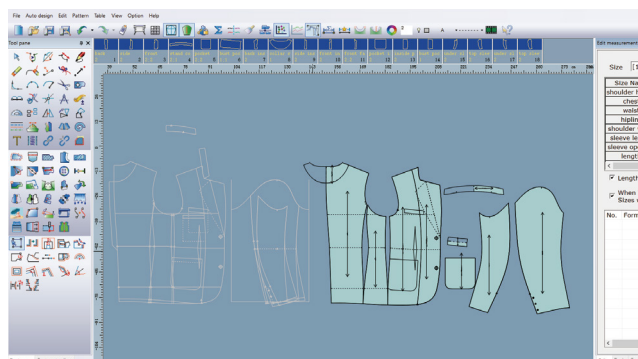
GetonAgain Garment CAD V2024.1 is a professional software for garment pattern making, grading, and marker nesting. It is available in three versions: standalone, network, and database. The software is designed to provide an efficient and professional solution for individual freelance pattern makers, studios, factories, and large enterprises, catering to custom tailoring, small-batch quick turnaround, and mass production orders. The software integrates both the freehand method and the formula-based method for pattern making. Users can quickly create patterns and grading using the freehand method or utilize the formula-based parametric modeling to efficiently create personalized patterns for individual needs.



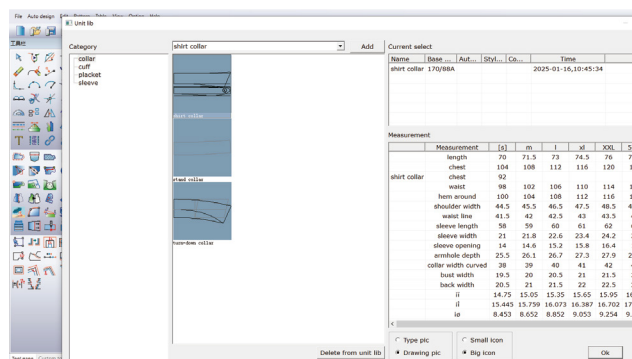
The Intelligent Pen Tool integrates over 20 functions, enabling pattern makers to draw pattern structure diagrams using just the Intelligent Pen Tool.



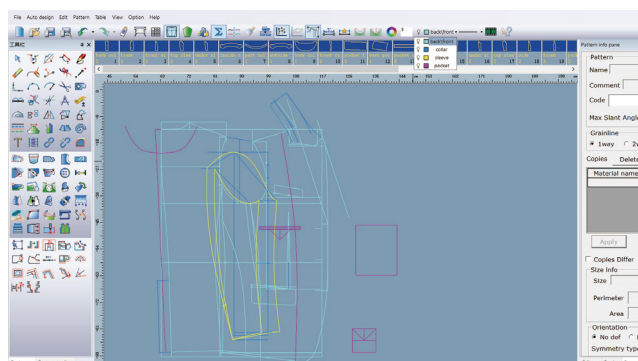
Customize the toolbar and shortcuts according to your operating habits and personal preferences to improve pattern-making efficiency.



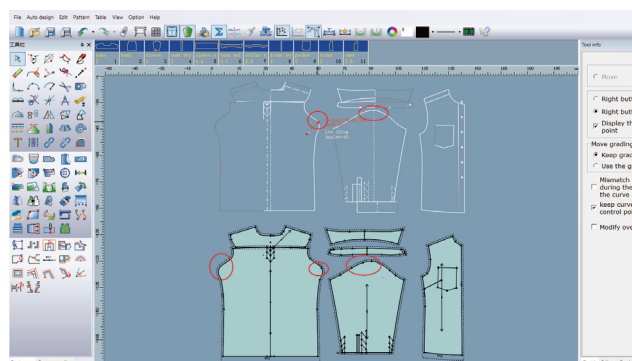
Formula-based modeling enables quick and efficient creation of personalized patterns for each individual.



Component Library allows saving frequently used parts for easily adopt for using at any time, automatically associated to the styles new dimensions.

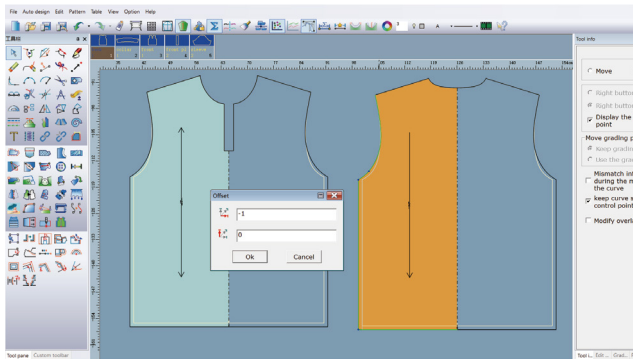


Complex style structure diagrams, layer settings can be applied to ensure clear lines and allow for quick identification of each part.

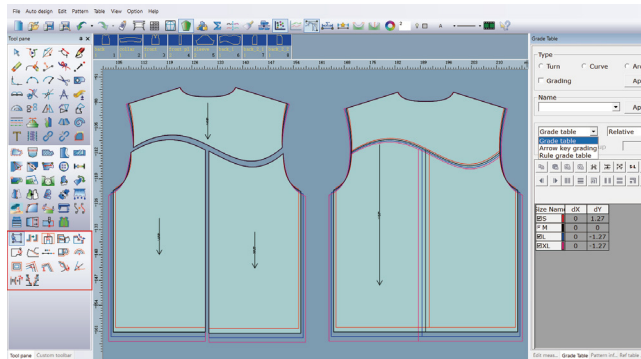


Constructure diagram and patterns can be linked for simultaneous modifications.

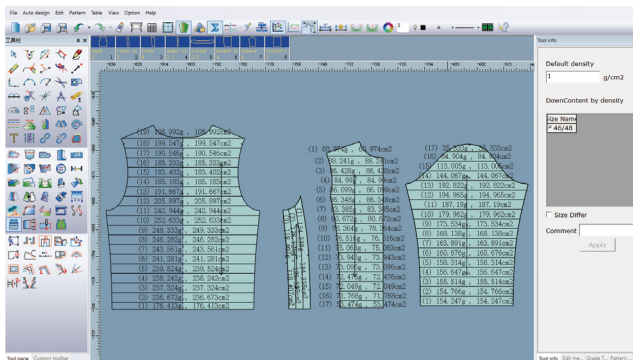
GetonAgain Garment CAD V2024.1



Quickly modify customer-supplied patterns or small-batch patterns.

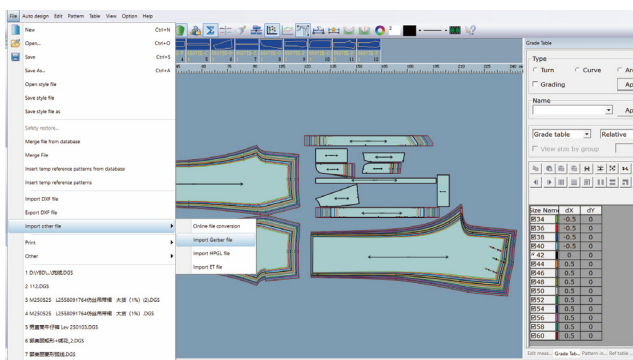


Software offers various grading functions, including point grading, line grading, angle grading, and rule-based grading, enabling precise grading for points, lines, and areas.

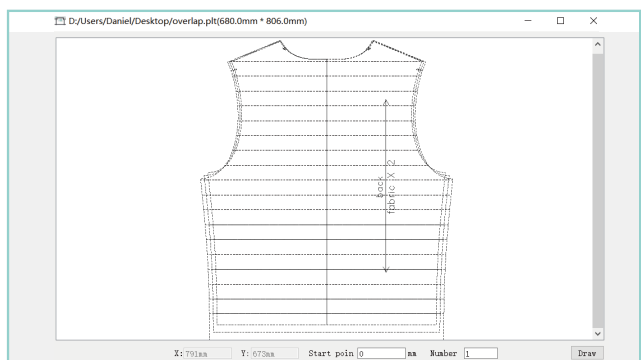


For down jacket patterns, the software provides two filling modes: calculating the down amount based on the required down weight per unit area, and distributing the down weight based on the total weight of the entire garment. Additionally, it can automatically export a down-filling weight table.

MIO									
fx									
	A	B	C	D	E	F	G	H	I
	Name		density (g/cm2)			Loss (%)	Copies	Area (cm2)	Single sheet filling (g)
	46/48	48/50	50/52	52/54	54/56				Down content (g)
1									
2									
3									
4									
5									
6									
7									
8									
9									
10									
11									
12									
13									
14									



Software supports reading multiple file formats, including PLT, HPGL, DXF, as well as ZIP, PRJ, and DGS formats.



Software can output full-size pattern overlays as a mesh diagram in PLT file format.

Shenzhen GetonAgain Software Co., Ltd.

Address: Room 20B, Block A, Haiwang Building, No. 2221 Nanhai Road, Nanshan District, Shenzhen, China.

Email: cad@getonagain.com

400-655-8662



Facebook

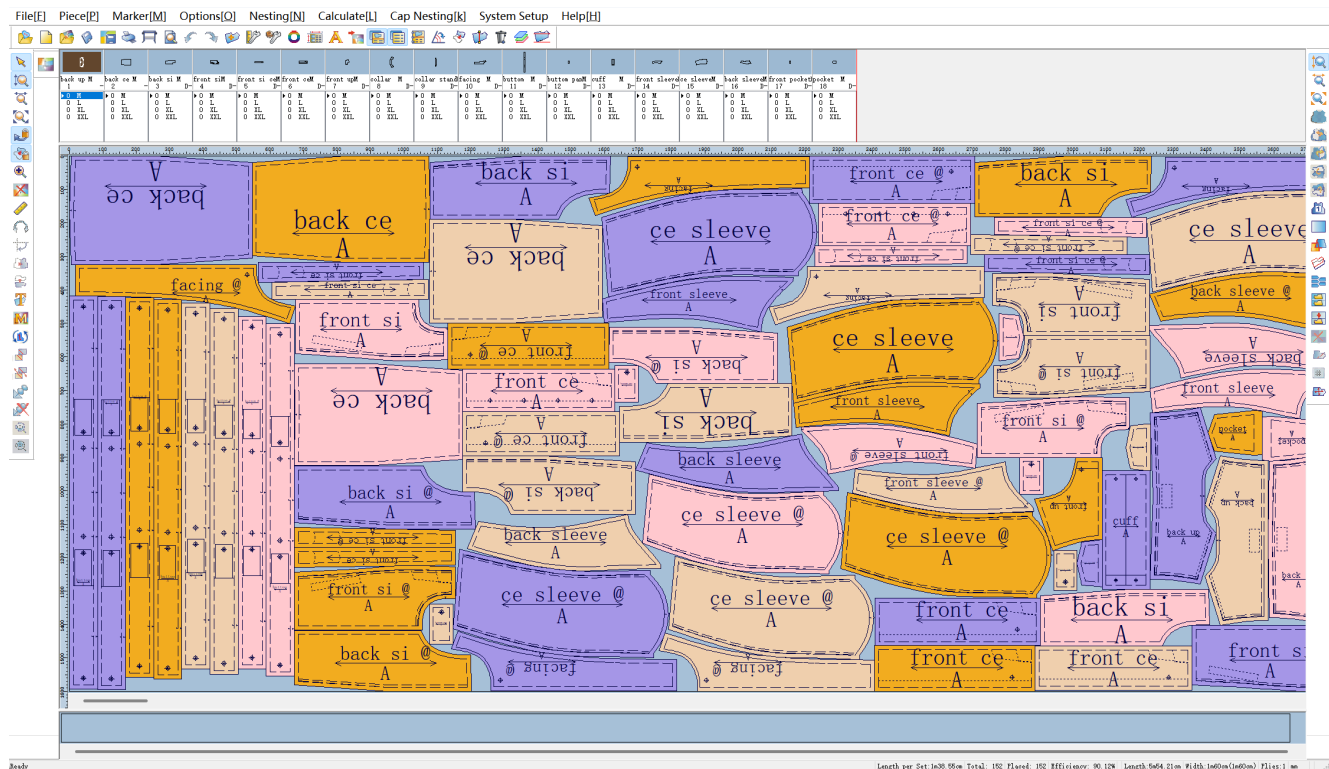


Youtube

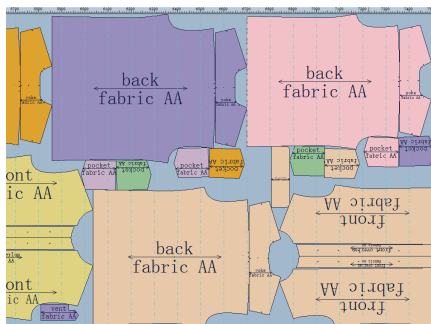
20250611

GetonAgain Garment Marker CAD V2023.1(SuperNest)

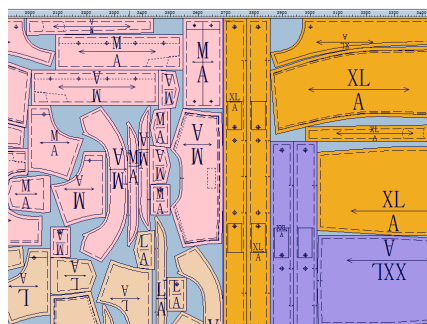
GetonAgain Garment Marker CAD V2023.1(Super Nest), is a multi-core advanced Super-nesting system. It offers various nesting methods, including mixed nesting, color shading avoidance, fabric defect avoidance, stripe and plaid alignment, etc., with various nesting methods. Software is suitable for a wide range of clothing types, such as loungewear, underwear, T-shirts, shirts, outdoor jackets, down jackets, wool coats, and suits. Additionally, it caters to industries like footwear, hats, bags, automotive interiors, furniture, sofas, toys, and gloves. It helps enterprises improve nesting efficiency, save raw materials, and achieve cost reduction and efficiency enhancement.



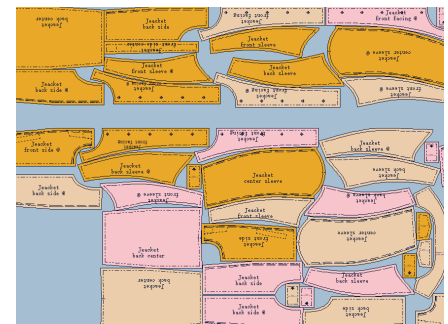
With mixed material nesting, a high-utilization marker can be generated in just 5 minutes.



With stripe and plaid matched nesting, high-utilization markers can also be achieved for checkered fabrics.



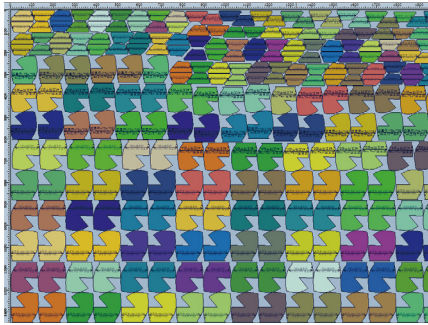
Avoid color shading on fabric edges and horizontal color shading problem.



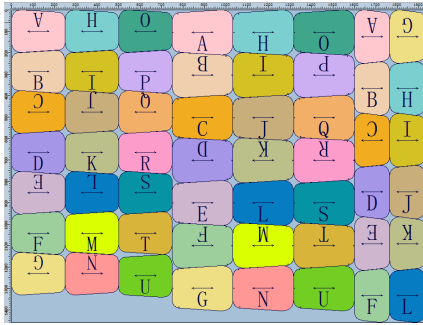
Customizable no-nesting areas are automatically circumvented during super nesting.

More nesting methods: Pattern Group Nesting, All Patterns Same Direction Nesting, Any Angle Direction Nesting, Each Set of Patterns Same Direction Nesting, Specified Rotation Angle Nesting, Distance Grouping Nesting, Special Angle Nesting, Same-size Patterns Same Direction Nesting, and Pattern Overlapping (stacking) Nesting.

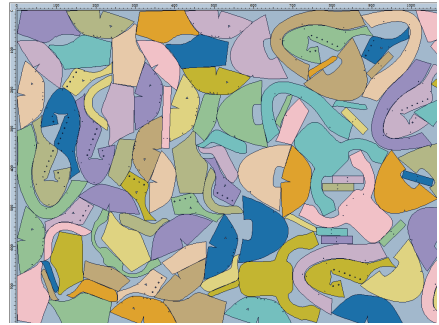
GetonAgain Garment Marker CAD V2023.1(SuperNest)



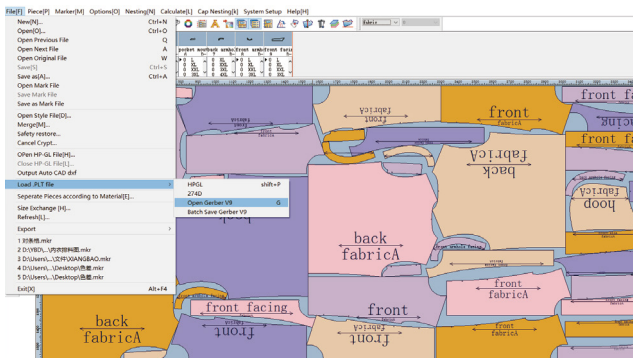
Underwear pattern nesting



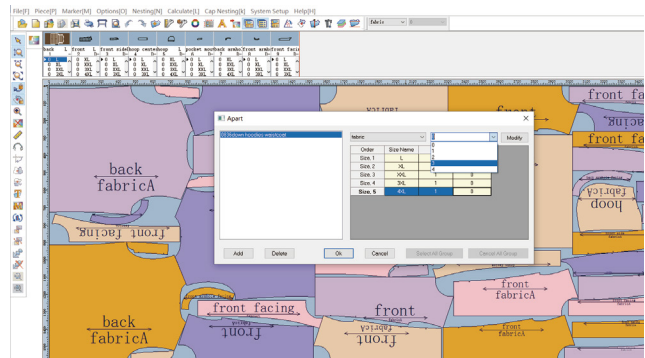
Bag pattern nesting



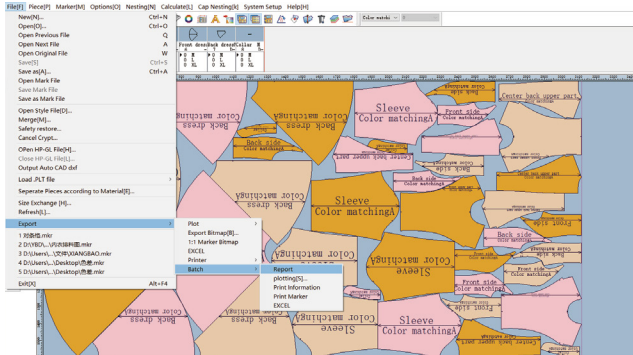
Shoe pattern nesting



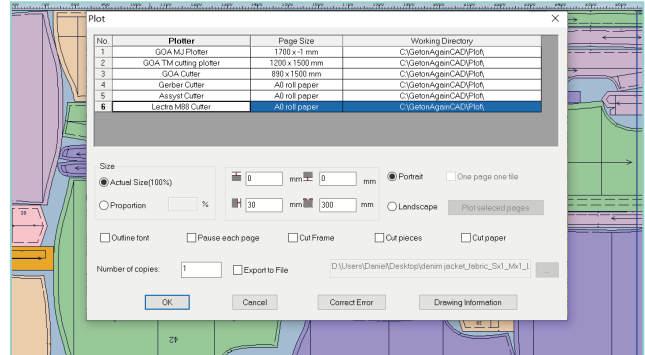
Marker software can read common formats such as PLT, HPGL, DXF, and CUT for nesting purposes.



Marker supports spreading table-splitting, allowing multiple markers to be saved in a single file.



Batch output marker, Excel tables, reports, etc.



Support multi-brand plotter, cutting plotter machine, flat cutting machine, cutting machine and other machine connection.

Version Selection

Single version SuperNest

Standalone local operation, with software dongle plug-and-play, high flexibility.

Application Scenario:
One person, one set.

Server SuperNest

Local area network (LAN) sharing and multi-user super nesting help reduce costs.

Application Scenario:
Multi-user sharing of one set.

Shenzhen GetonAgain Software Co., Ltd.

Address: Room 20B, Block A, Haiwang Building, No. 2221 Nanhai Road, Nanshan District, Shenzhen, China.

Email: cad@getonagain.com

400-655-8662



Facebook



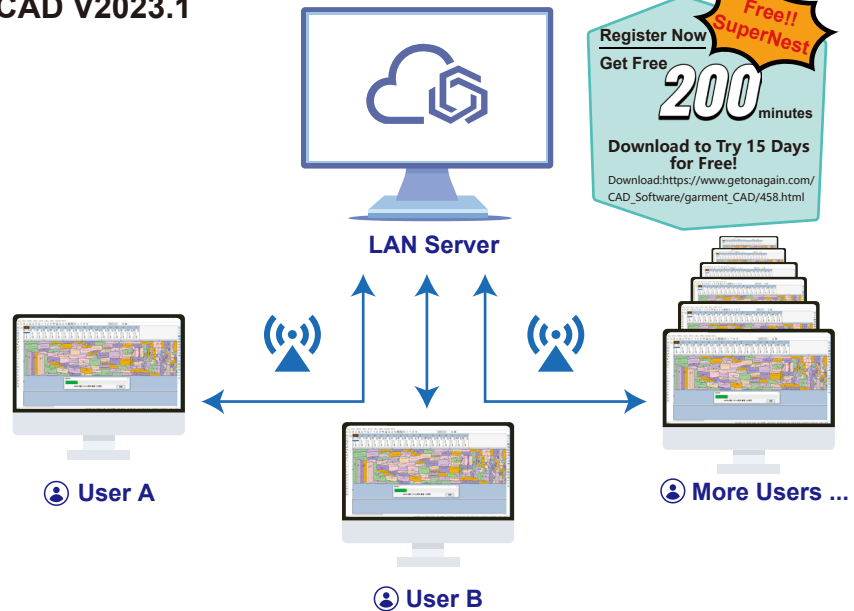
Youtube

20250611

Server SuperNest

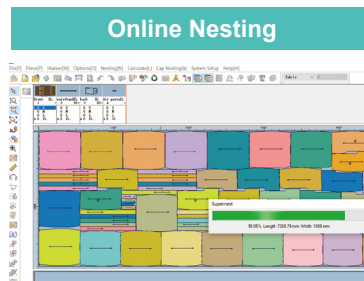
GetonAgain Garment Marker CAD V2023.1

- ✓ Collaborative Sharing
- ✓ Non-Stop Working All Days
- ✓ High usage Percentage
- ✓ Low Cost

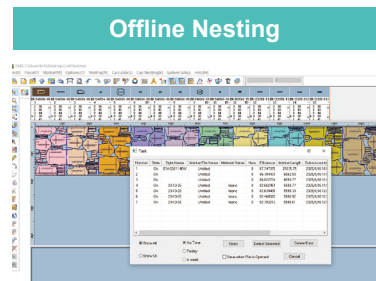


Product Features

- Server SuperNest is a powerful nesting system designed for use within the same local area network, allowing multiple nesting operators to work simultaneously.
- Operators can choose between Online nesting and Offline nesting, two modes. Super computing capabilities enable repeated and iterative calculations to optimize nesting tasks, retaining the results with the highest utilization rate.
- It supports 24/7 operation, ensuring continuous nesting even when operators are not working, helping enterprises reduce costs and improve efficiency.



Markers results are displayed in real-time.



Automatically performs nesting in offline mode while the client can execute other tasks simultaneously.

More Nesting Methods

- Mixed nesting
- Segmented nesting
- Defect-avoidance nesting
- Custom nesting
- Plaid and stripe matching nesting
- Pattern grouping nesting
- Distance - grouped nesting
- Nesting patterns of the same size in the same direction
- Nesting at any angular direction
- Nesting with specified rotation angles
- Supported compatible file formats: DXF/HPGL. It can be connected to other CAD software.
- Supports output to plotters/cutters and cutting equipment from multiple brands
- Special angle nesting
- Pattern corner - overlapping nesting
- Optimal utilization width calculation
- Nesting all patterns in the same direction
- Nesting each set of patterns in the same direction

Shenzhen GetonAgain Software Co., Ltd.

Address: Room 20B, Block A, Haiwang Building, No. 2221 Nanhai Road, Nanshan District, Shenzhen, China.

Email: cad@getonagain.com

400- 655- 8662



Facebook



Youtube

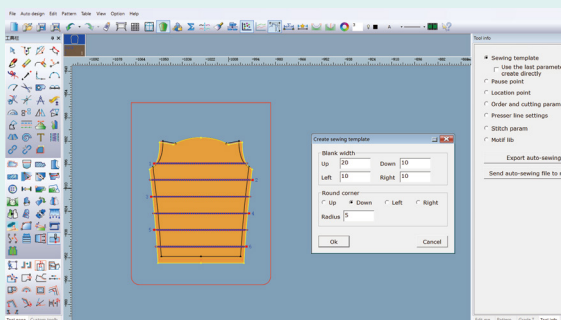
20250611

GetonAgain AutoSew CAD V2023.1

- GetonAgain AutoSew CAD System V2023.1 features six major functions: pattern creation and grading, material layout, template design, template plotting, template slotting, and template sewing. It is a highly practical and user-friendly professional template design software.

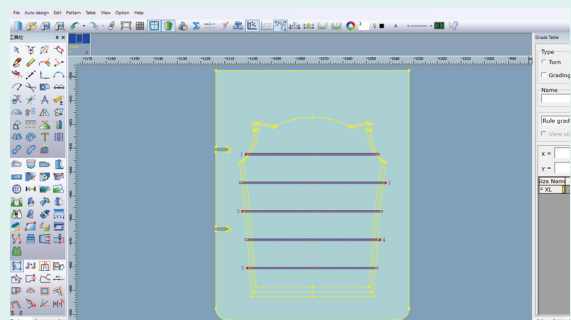
- This software is suitable for designing and producing templates for various types of clothing, such as home wear, T-shirts, shirts, outdoor jackets, down jackets, wool coats, and suits. Additionally, it is applicable to industries like automotive interiors, furniture, sofas, gloves, toys and hats .

One-Click Template Creation



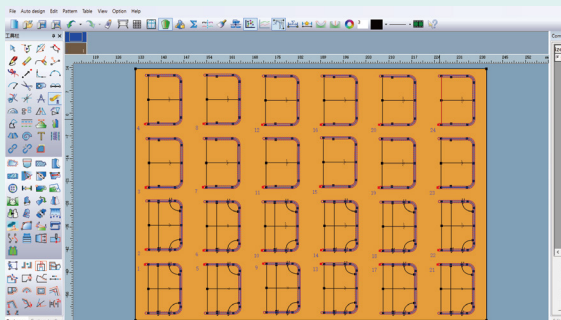
Quickly generate regular templates.

Quick Slot Creation



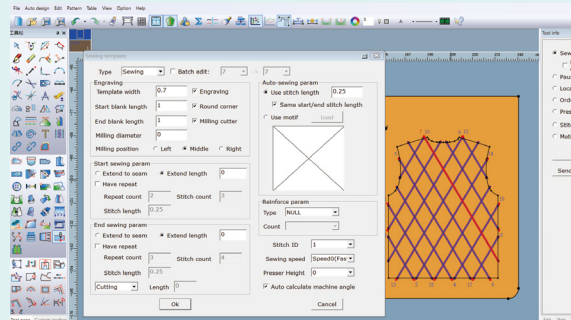
Quickly produce Sewing Slots.

Template Layout



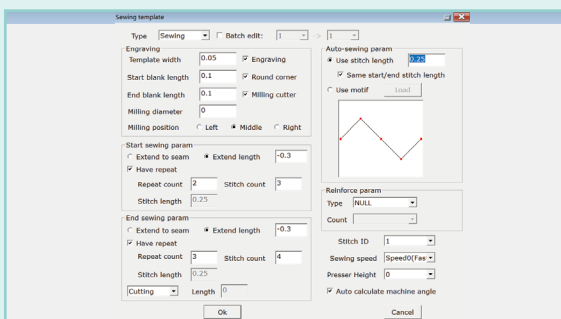
One-click for pattern layout optimization, improved combinations, increased material utilization, and template savings.

Auto Sequence Setup



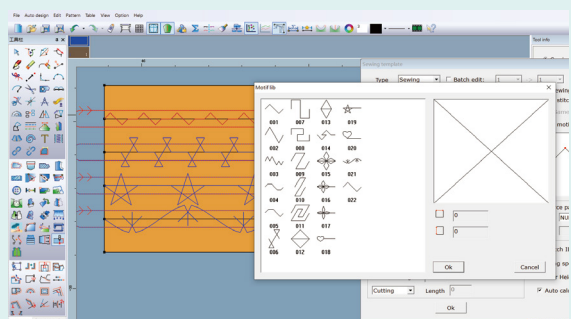
Single-interface template slotting setup, optimized cutting sequence, and improved cutting or milling efficiency.

Quick Sewing Path Setup



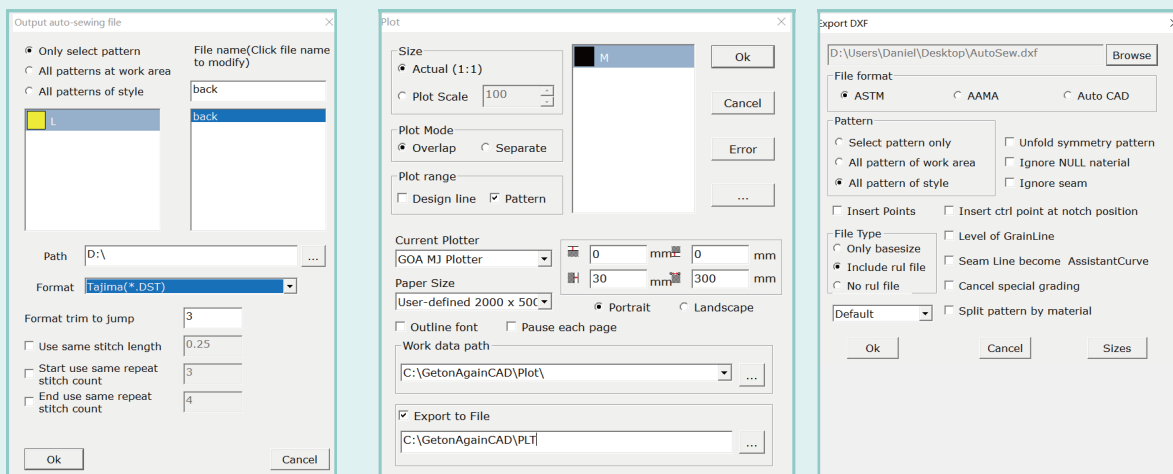
Single-interface stitching design, including backstitch, return stitch, lock stitch, and stitch length settings.

Multiple Stitching Options



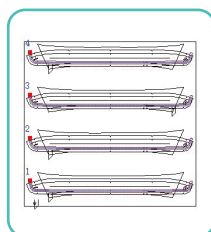
Provide many motif stitching patterns and allow DIY design.

Quick Machine Type File Save

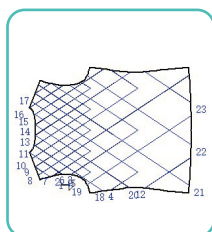


Output PLT/DXF files compatible with various brands template cutting machines, and DSR/DST files compatible with various brands template sewing machines.

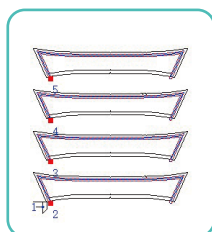
Template Sewing Application On Garment



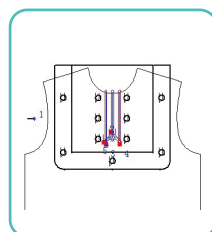
Lapel and Stand Collar



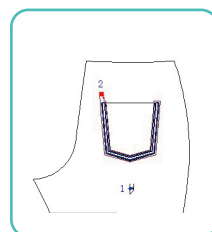
Panel



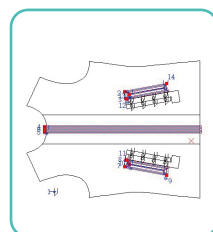
Collar



Placket



Pocket



Zipper+Side Pockets

General Connecting Equipment



Computerized Template Sheet Cutting & Milling Machine



High-speed Oil-free Pattern Template Machine (Rotary Head)



Automatic Template Sewing Machine

Shenzhen GetonAgain Software Co., Ltd.

Address: Room 20B, Block A, Haiwang Building, No. 2221 Nanhai Road, Nanshan District, Shenzhen, China.

Email: cad@getonagain.com

400-655-8662



Facebook

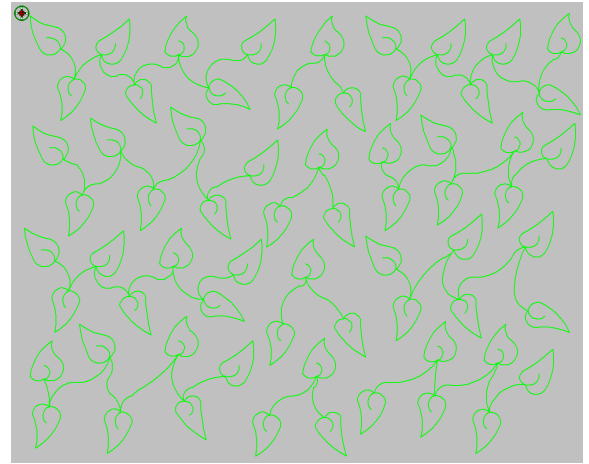
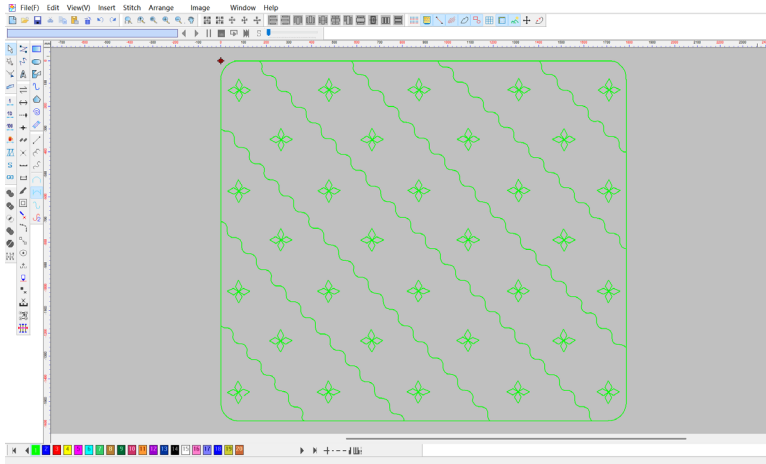


Youtube

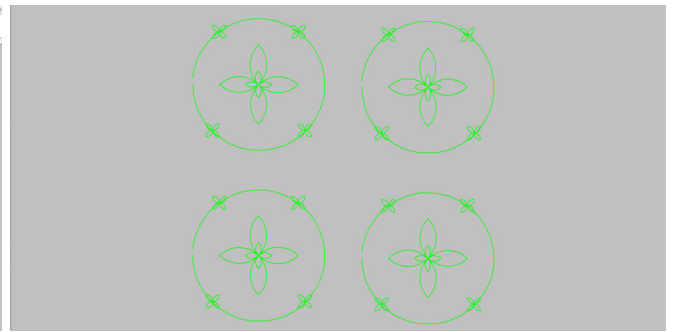
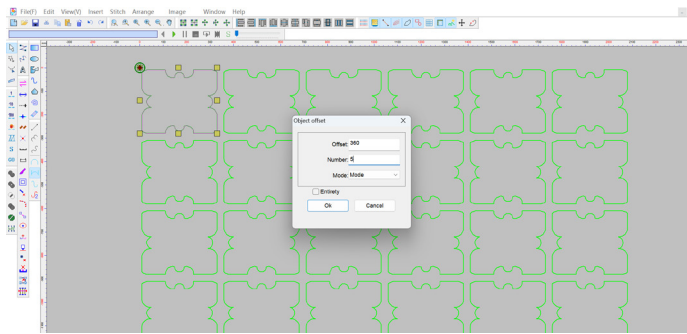
20250611

GetonAgain Quilting CAD V1.0

Quilting CAD has many functions such as quilting stitch needling, offset pattern objects, flip-over connection, multi-directions copy, etc.



Software can simulate the quilting stitch effect and the result after pattern object offset, etc.

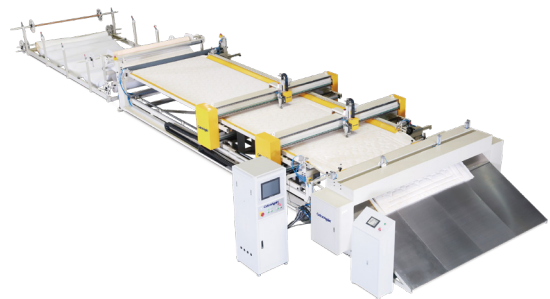


The head flip-over connection provides machine head lifting, flip-over commands. Multi-function copy is including rectangular mirror, rectangular offset, arc mirror, arc offset, and arc rotation.

General Connecting Equipment



Computerized Single Needle Quilting Machine-lifting Head



Continuous Feeding Double Saddles Quilting Machine (with Supporting Belt)

Shenzhen GetonAgain Software Co., Ltd.

Address: Room 20B, Block A, Haiwang Building, No. 2221 Nanhai Road, Nanshan District, Shenzhen, China.

Email: cad@getonagain.com

400-655-8662



Facebook



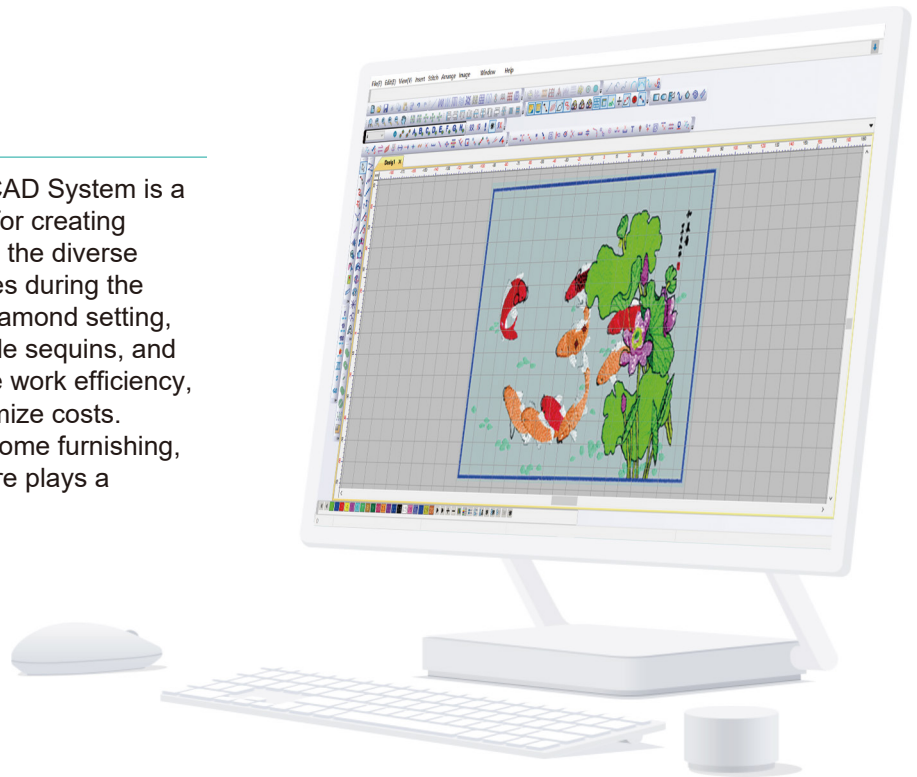
Youtube

20250611

GetonAgain Emb CAD V1.0

Application

GetonAgain Intelligent Embroidery CAD System is a powerful and user-friendly software for creating embroidery patterns, tailored to fulfill the diverse requirements of embroidery machines during the pattern-making process, including diamond setting, cross-stitch, towel embroidery, double sequins, and more. It empowers users to enhance work efficiency, shorten production cycles, and minimize costs. Across industries such as apparel, home furnishing, and other textile sectors, this software plays a pivotal role.



Featured Functions

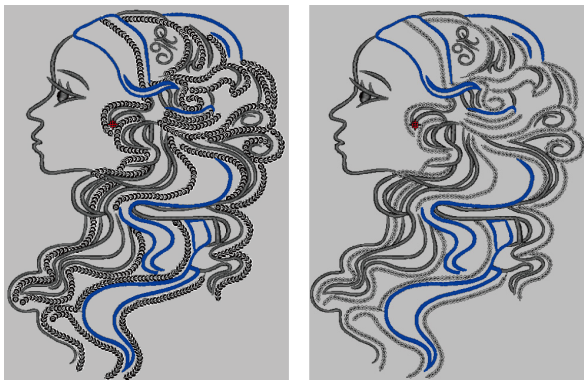
Multiple input methods: Provides basic linear, strip, and area input method tools to meet users' needs for designing complex flower patterns.

Import image file function: Allows for the design of floral stitch patterns on imported images.

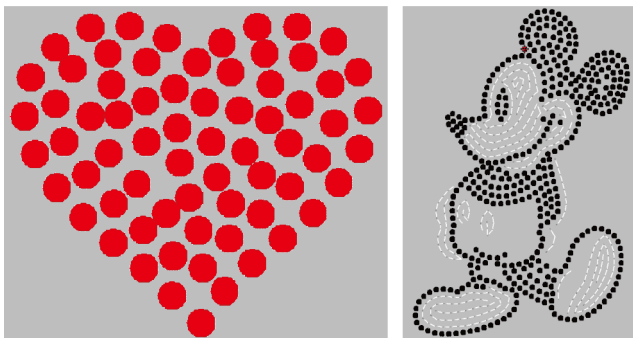


GetonAgain Emb CAD V1.0:

Sequin function: Allows for setting various sequin parameters (wrapping mode, concentric, hoop, fish scale, etc.) to achieve different application effects of sequins.



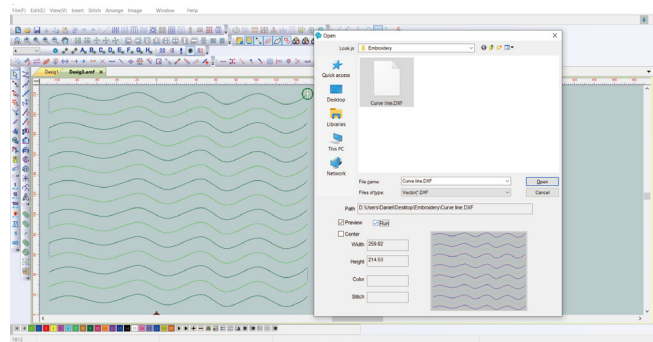
Diamond setting function: Enables the application of various diamond-shaped graphics for diamond setting.



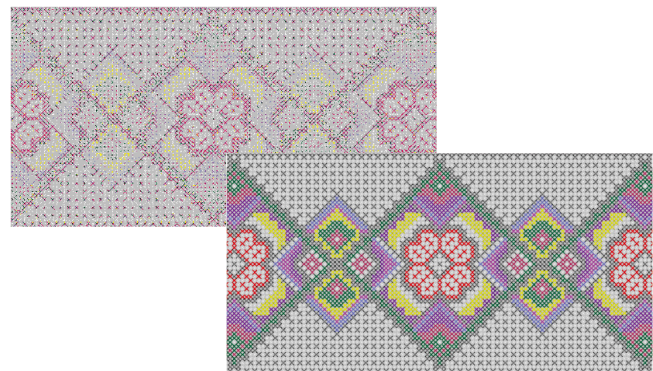
Towel embroidery function: Fills in the design of graphics to achieve the effect of towel embroidery.



Import vector file function: Automatically converts imported vector data into single stitch data.



Cross-stitch function: Automatically generates cross-stitch patterns.



Assign Serial Number Function: Allows for assigning new serial numbers to specified objects.



Shenzhen GetonAgain Software Co., Ltd.

Address: Room 20B, Block A, Haiwang Building, No. 2221 Nanhai Road, Nanshan District, Shenzhen, China.

Email: cad@getonagain.com

400- 655- 8662



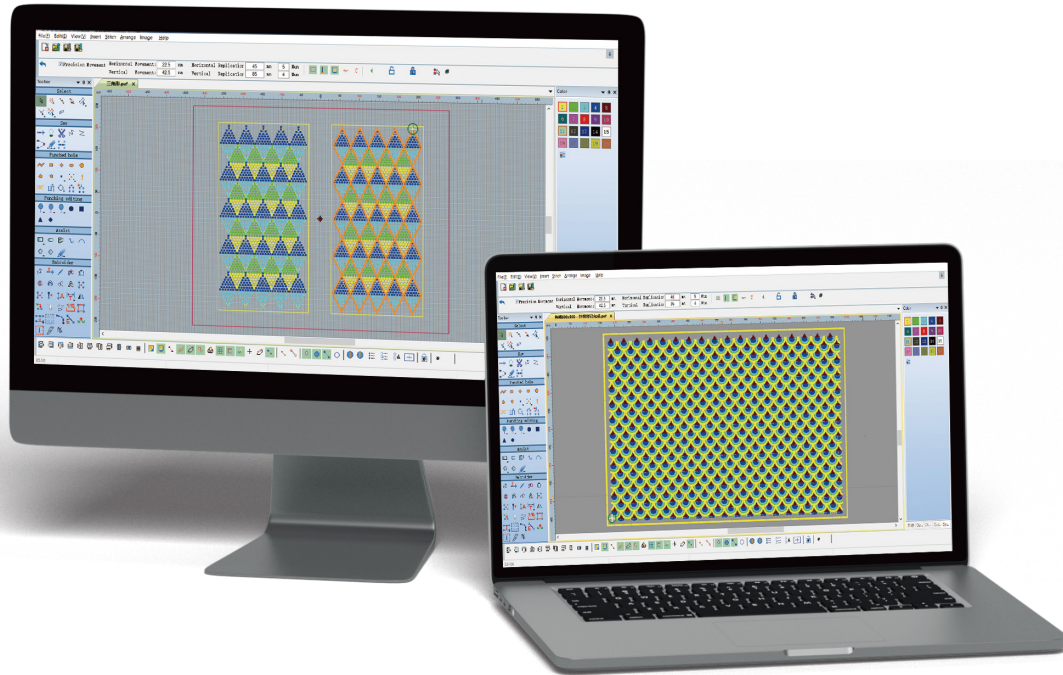
Facebook



Youtube

20250611

GetonAgain SewPerEmb CAD V1.0

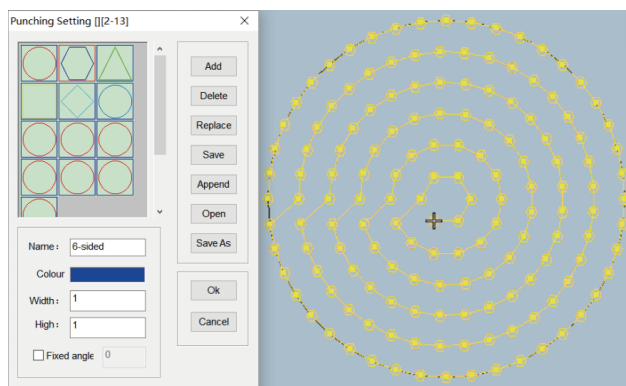


Application

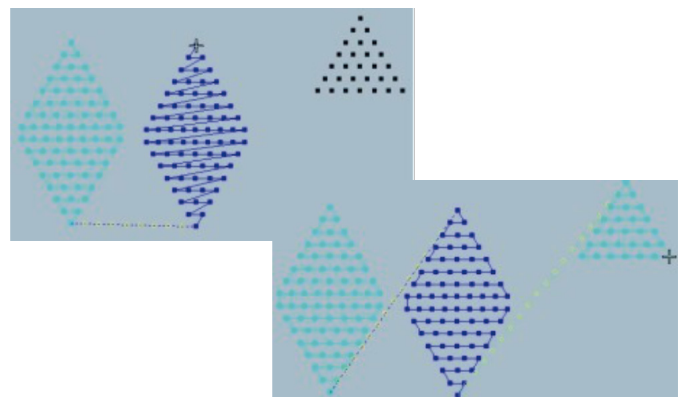
GetonAgain Intelligent SewPer CAD system is a professional pattern design software functioned with perforation, sewing and embroidery, which is widely used in the leather industry, such as leather, PU and lint composite materials. Intelligent icons, easy to learn and use. Suitable for pattern design making for various perforation machine, perforation and sewing machine, or integrated perforation sewing and embroidery machine.

Featured Functions

Preview function for Special-shaped hole knife shape display: Knife shape of special-shaped holes can be previewed directly in the software, so as to better grasp the perforation shape and direction position.

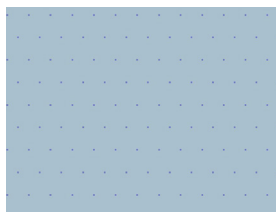


Copy & paste function for Stitch path: Copy and paste stitch path for circular pattern design, greatly improved work efficiency.

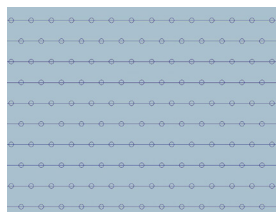


GetonAgain SewPerEmb CAD V1.0

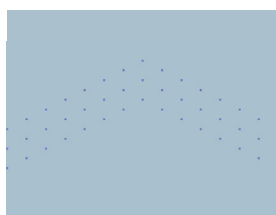
Various perforation scanning methods: Support various scanning methods on vertical, horizontal, circular, regional, automatic line, split and etc. to meet fast pattern design making of different shapes.



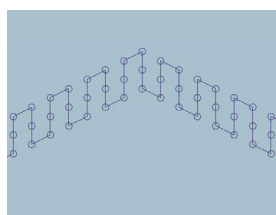
Before Connecting



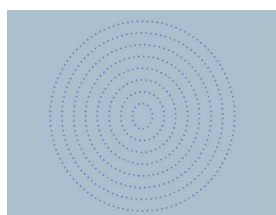
After Connecting



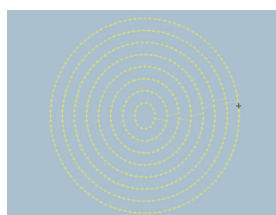
Before Connecting



After Connecting

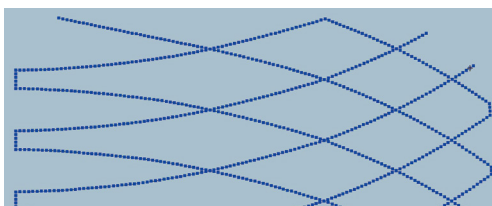


Before Connecting

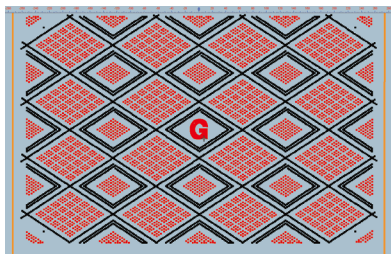


After Connecting

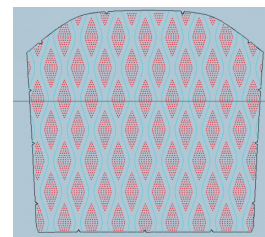
Sewing function: Defined stitch length, intelligent back stitches, and perfectly combined with perforation and embroidery functions.



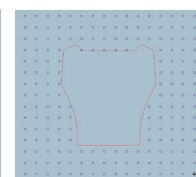
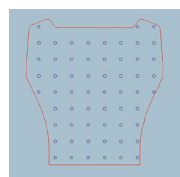
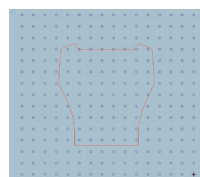
Embroidery function: Various embroidery stitching, and perfectly combined with perforation and sewing functions.



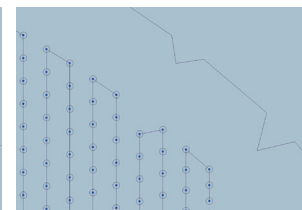
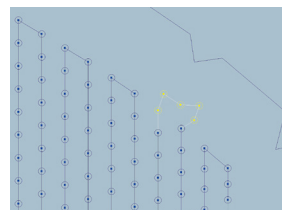
DXF file Reading: Support DXF file; it can be pre-edited, and automatically converted into stitch.



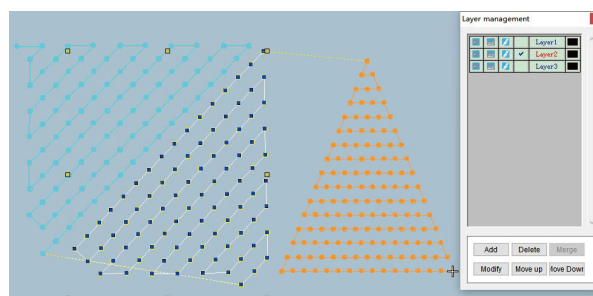
Stitch area deletion function: Edit the selected closed loop area, the aperture inside and outside the area can be deleted.



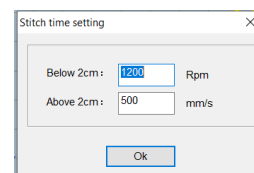
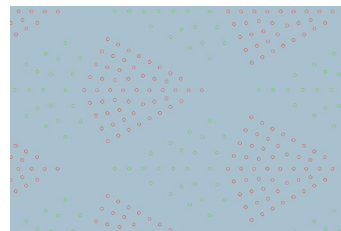
Intelligent stitch editing function: Provide a variety of stitch editing tools to add, delete, move, rotate and other editing actions for the single stitch or parts of multi-stitch to achieve the perfect pattern design.



Object layers design function: Design to different layer objects.



Automatic time statistics: Automatic statistics of perforation completion time.



Shenzhen GetonAgain Software Co., Ltd.

Address: Room 20B, Block A, Haiwang Building, No. 2221 Nanhai Road, Nanshan District, Shenzhen, China.

Email: cad@getonagain.com

400-655-8662

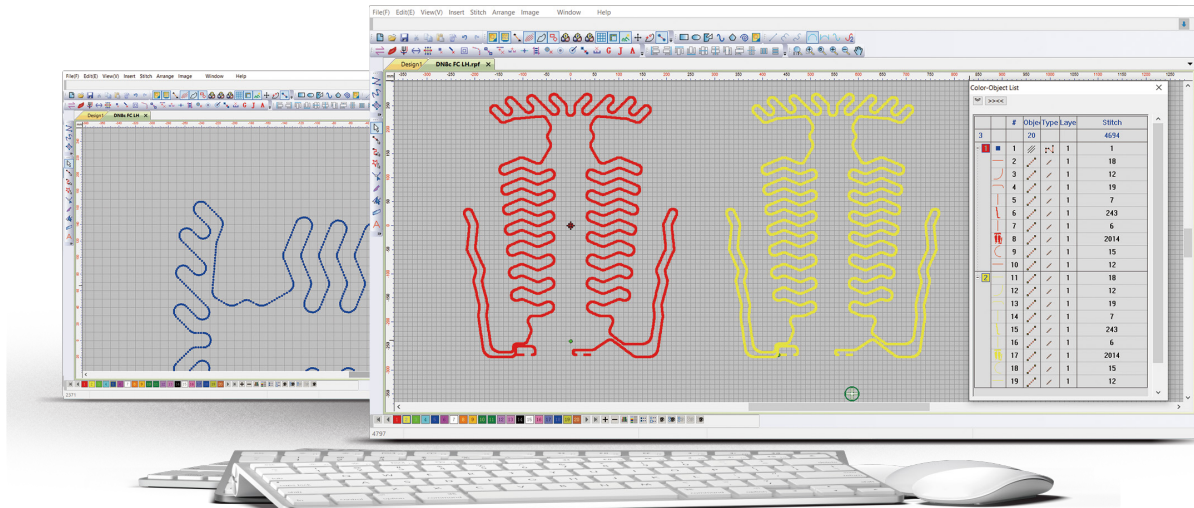


Facebook



Youtube

20250611



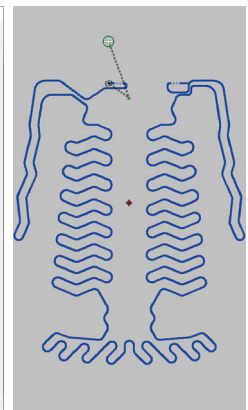
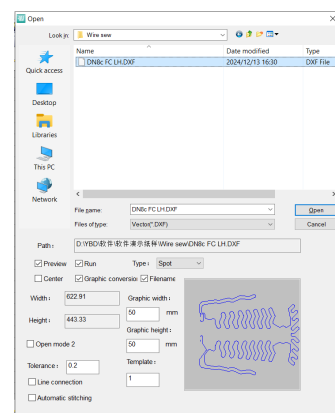
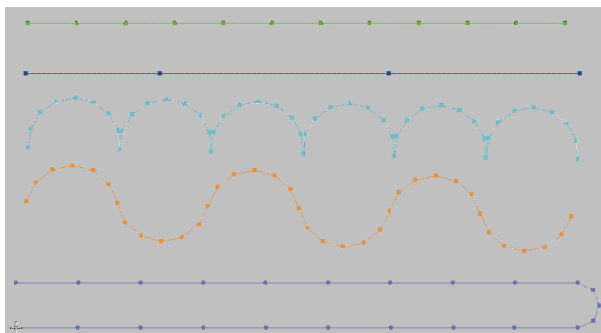
Application

GetonAgain Intelligent Wire Stitching CAD System is a professional wire placement CAD software for various heating resistance wires positioning path design and cooling tubes placement path design. It provides abundant of input method tools, intelligent optimization of wiring paths, widely applied in automotive interior seat heating wire placement, steering wheel heating wire placement, and heating wire positioning path design to clothing and apparel, heating blankets, carbon fibre placement, etc.

Featured Functions

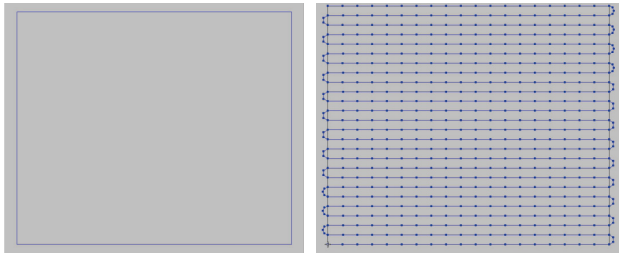
Input Method Tools: Provides abundant of linear and strip tools to facilitate free designing of various graphics, easy to edit and modify.

Reading DXF Files: Supports DXF file reading, easy to import, view and edit graphics in DXF format.

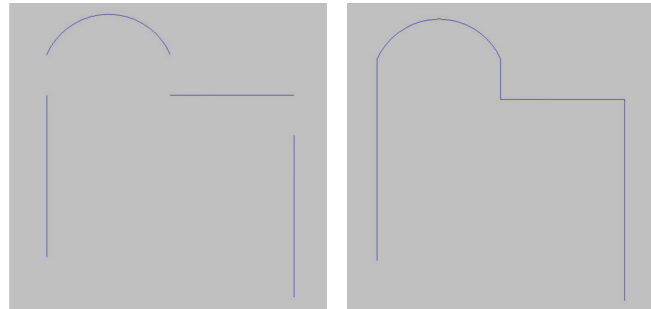


GetonAgain WireSew CAD V1.0

Pattern Filling: Automatically calculates and fills the parallel lines in the area, and calculate arc connecting lines between adjacent lines, fast filling with high efficiency.



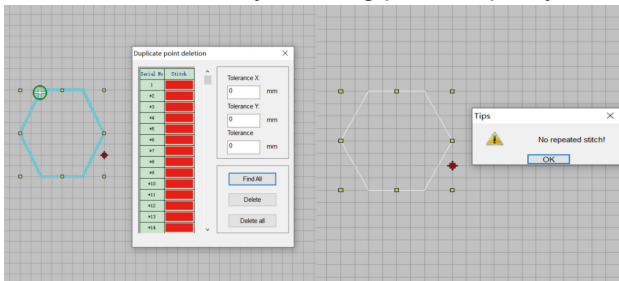
Intelligent Line Connecting: Multiple disconnected line segments can be intelligently connected to form a line.



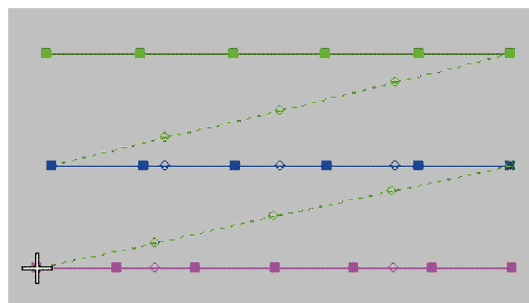
Before Connecting

After Connecting

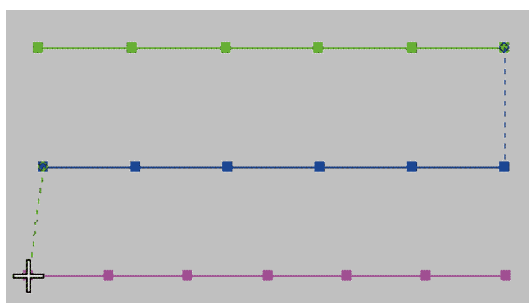
Duplicate stitch deletion: To delete the duplicate stitches, for effectively ensuring product quality.



Intelligent Sorting: Intelligent optimization of stitch paths effectively improves work efficiency.

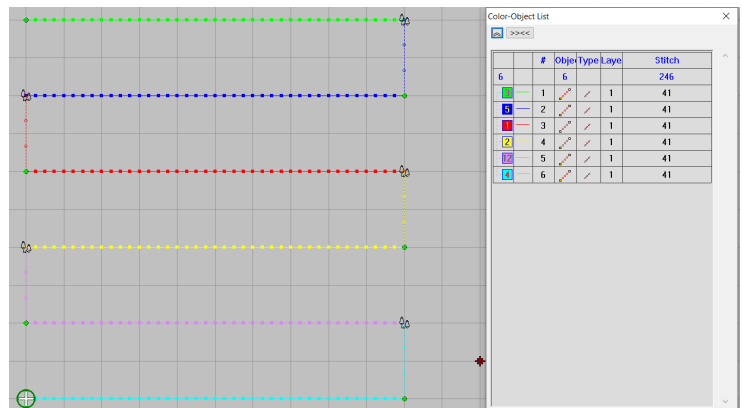


Before Sorting

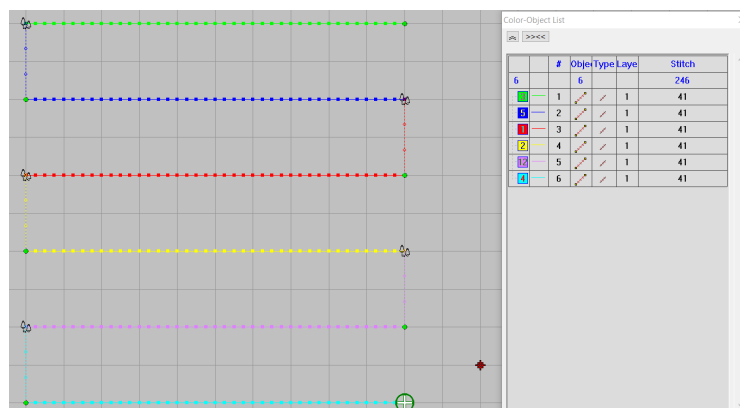


After Sorting

Reverse sorting: Sorts the selected objects in reverse order.



Before Sorting



After Sorting

Shenzhen GetonAgain Software Co., Ltd.

Address: Room 20B, Block A, Haiwang Building, No. 2221 Nanhai Road, Nanshan District, Shenzhen, China.

Email: cad@getonagain.com

400-655-8662



Facebook



Youtube

20250611

You design, we do.
You create, we fulfill.
Your space, you dominate.
Your creativity let you cool.

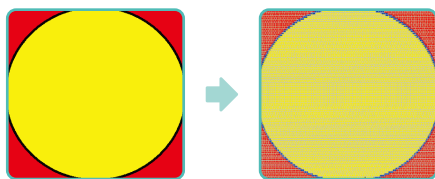


For more information regarding Tufting CAD Software, please visit Getonagain website.

www.goacad.cn

Application

Getonagain Intelligent Tufting CAD provides designers with flexible drawing tools, and given great technical support for tufting art creation and tufting carpet design.



Main Function

- Including input tools such as linear & belt shape structure as well as by area, etc.
- Label mechanism: used for folding and sewing labels.
- Insert image, through the outline feature, the pattern outer shape can be achieved.
- Direct import DXF data file, pattern outline can be achieved.
- Import bitmap data file, promptly create related vector object.
- Able to process resize on multi-section of outlines.

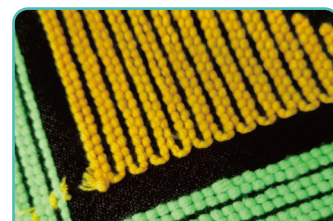
Special Features

- **Intelligent Pen:** able to edit line object with parallel, cutting, extend, resize, measure, copy, mirror, trimming and offset, etc operations.
- **Yarn Loop Marking:** single button to set loop pile or cut pile operation.
- **Bitmap to Vector:** able to convert bitmap image to vector line object, easy for stitches filling later on.
- **Spiral Tools:** able to set number of turns, number of times, spacing and spiral shape for different colors.
- **Specified Sequence:** able to arrange stitch sequence upon request.

Stitching Modes



Spiral Stitch



Arch Stitch

Shenzhen GetonAgain Software Co., Ltd.

Address: Room 20B, Block A, Haiwang Building, No. 2221 Nanhai Road, Nanshan District, Shenzhen, China.

Email: cad@getonagain.com

400- 655- 8662



Facebook



Youtube

20250611

GetonAgain®



Facebook



Youtube

400-655-8662

Shenzhen GetonAgain Software Co., Ltd.

Address: Room 20B, Block A, Haiwang Building, No. 2221 Nanhai Road, Nanshan District, Shenzhen, China.

Email: cad@getonagain.com