

SuperNest GetonAgain Garment Marker CAD V2023.1



Download the key version

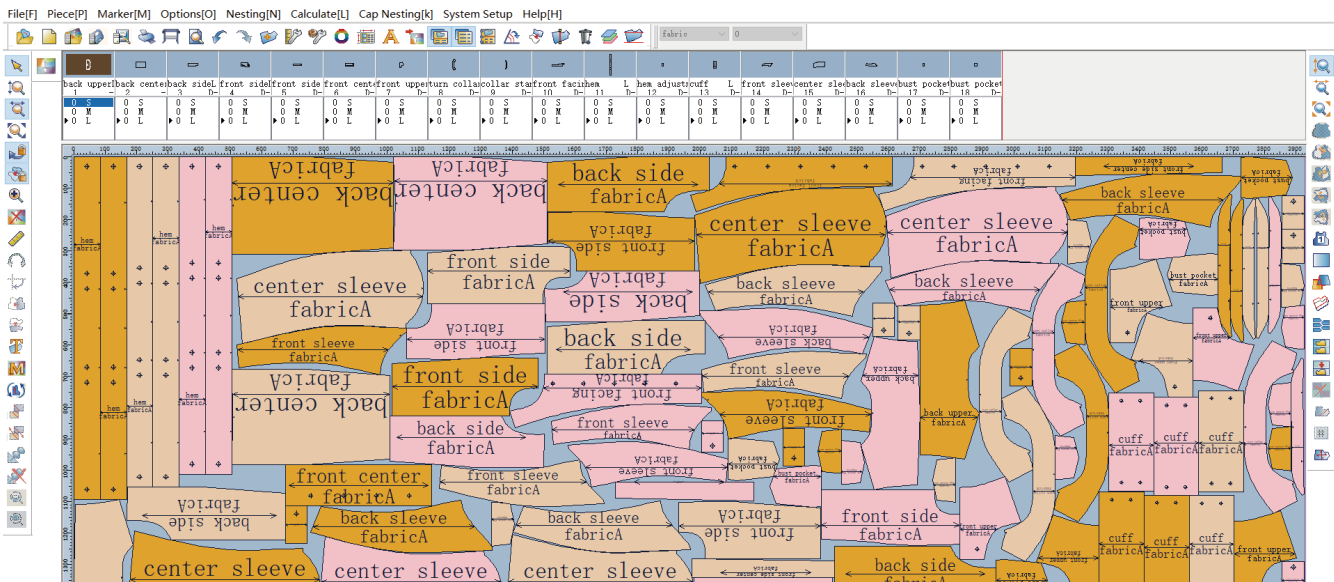


Download the free version

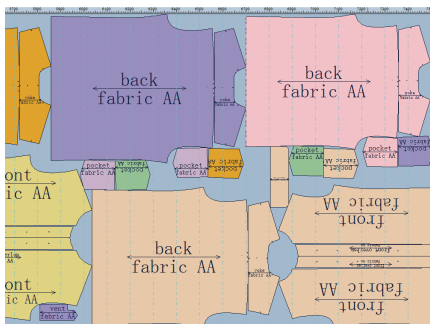


Download the 15-day try

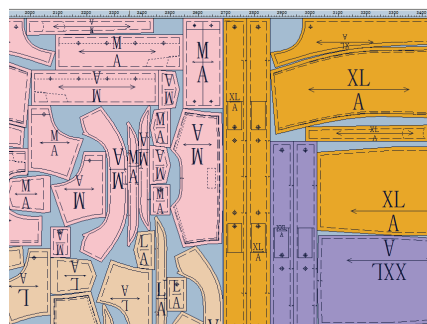
- GetonAgain Garment Marker CAD V2023.1(Super Nest), is a multi-core advanced Super-nesting system. It offers various nesting methods, including mixed nesting, color shading avoidance, fabric defect avoidance, stripe and plaid alignment, etc., with various nesting methods.
- Software is suitable for a wide range of clothing types, such as loungewear, underwear, T-shirts, shirts, outdoor jackets, down jackets, wool coats, and suits. Additionally, it caters to industries like footwear, hats, bags, automotive interiors, furniture, sofas, toys, and gloves.
- It helps enterprises improve nesting efficiency, save raw materials, and achieve cost reduction and efficiency enhancement.



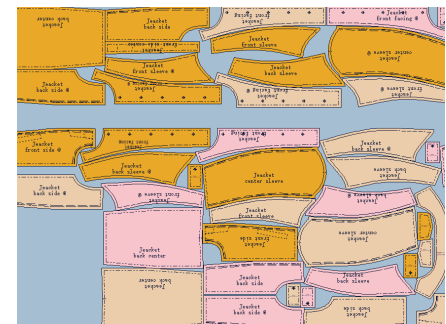
With mixed material nesting, a high-utilization marker can be generated in just 5 minutes.



With stripe and plaid matched nesting, high-utilization markers can also be achieved for checked fabrics.



Avoid color shading on fabric edges and horizontal color shading problem.

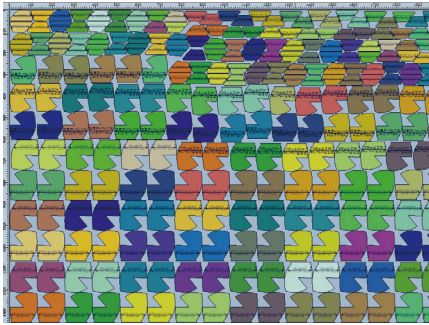


Customizable no-nesting areas are automatically circumvented during super nesting.

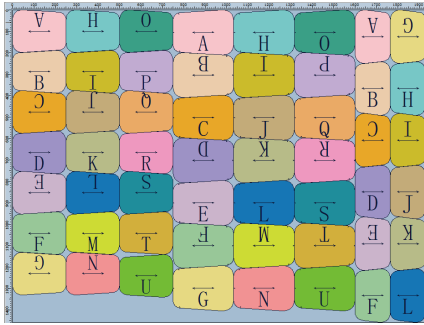
More Nesting Methods

- Pattern Group Nesting
- All Patterns Same Direction Nesting
- Any Angle Direction Nesting
- Each Set of Patterns Same Direction Nesting
- Specified Rotation Angle Nesting
- Distance Grouping Nesting
- Special Angle Nesting
- Same-size Patterns Same Direction Nesting
- and Pattern Overlapping (stacking) Nesting

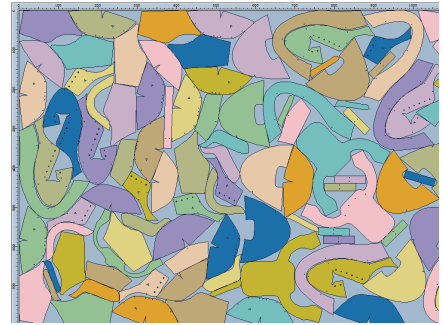
SuperNest — GetonAgain Garment Marker CAD V2023.1



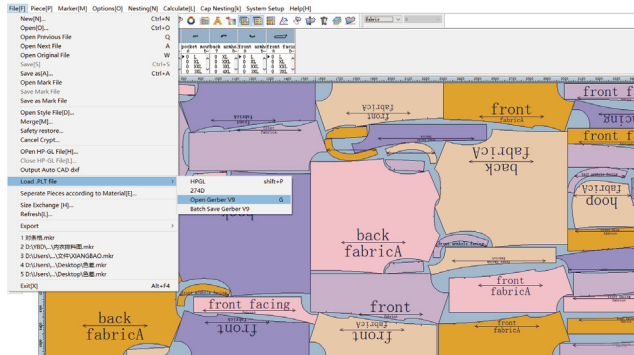
Underwear pattern nesting



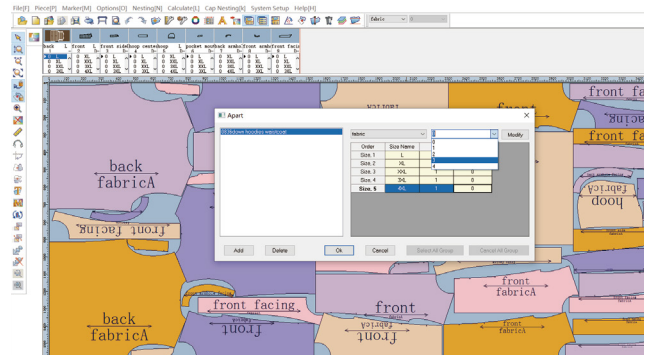
Bag pattern nesting



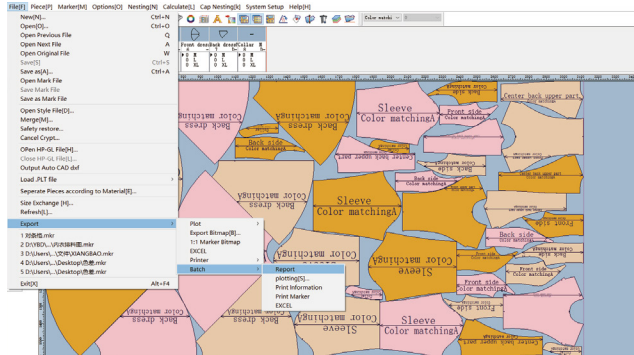
Shoe pattern nesting



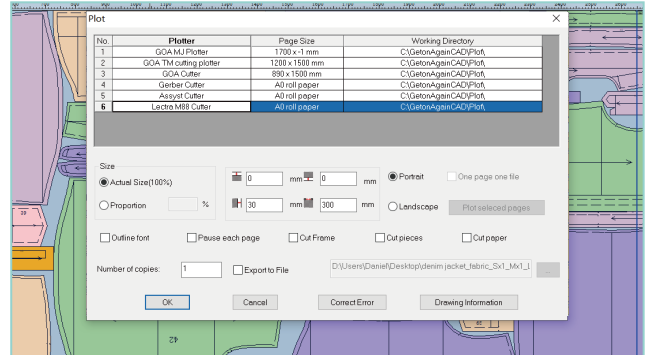
Marker software can read common formats such as PLT, HPGL, DXF, and CUT for nesting purposes.



Marker supports spreading table-splitting, allowing multiple markers to be saved in a single file.



Batch output marker, Excel tables, reports, etc.



Support multi-brand plotter, cutting plotter machine, flat cutting machine, cutting machine and other machine connection.

Version Selection

Single version SuperNest



Standalone local operation, with software dongle plug-and-play, high flexibility.
Application Scenario:
One person, one set.



Server SuperNest

Local area network (LAN) sharing and multi-user super nesting help reduce costs.
Application Scenario:
Multi-user sharing of one set.

Shenzhen GetonAgain Software Co., Ltd.

Address: Room 20B, Block A, Haiwang Building, No. 2221 Nanhai Road, Nanshan District, Shenzhen, China.

Email: cad@raiseagainetech.com

400-655-8662



Facebook



Youtube