

## 全自动激光开袋机

## Automatic Laser Pocket Opening Machine



### 机器特点

- 自动免烫折袋、自动接料、激光开袋、自动缝纫、自动剪线、自动收料。
- 断线自动停止、自动计数、花样自动储存、自动夹线、自动松线、自动内压框伸缩具有可调节功能，自动吸风装置、快速换夹具。
- 定制开袋机系统，无需作图，直接输入需求尺寸即可。
- 多功能手自一体夹具，永不夹手，支持多种夹具型号互换。
- 激光管寿命长，切割速度快，切口平整、不毛边。
- 配备精致放料斗，方便操作者取料，使操作时间缩短，提高工作效率。

### 适用范围

男女装前后袋、西装、上衣内外袋、西裤、卫衣、防晒服、校服、运动服、棉服、羽绒服、工装、夹克衫、制服、风衣、羊绒大衣、POLO衫门襟等。

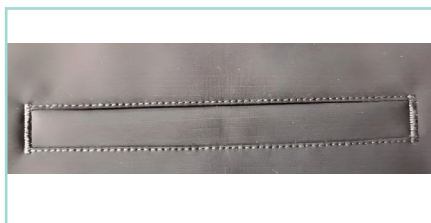
### Features

- Automatic ironing-free pocket folding, automatic material feeding, laser pocket opening, automatic sewing, automatic thread trimming, and automatic material collection.
- Automatic stop upon thread breakage, automatic counting, automatic pattern storage, automatic thread clamping, automatic thread loosening, and adjustable internal pressure frame retraction. Equipped with an automatic suction device and quick fixture replacement.
- Customizable pocket opening system, no need for drawing, simply input the required dimensions directly.
- Multi-functional machine hand for full sets of clamps, safe design that prevents clamping mistakes on human, and supports various clamp models for interchanging.
- Long-lasting laser tube with fast cutting speed, smooth and clean cuts without fraying.
- Equipped with a refined material hopper, making it convenient for operators to retrieve materials, reducing operation time and improving work efficiency.

### Application

Front and back pockets for men's and women's clothing, suits, inner and outer pockets of jackets, dress pants, hoodies, sun protection clothing, school uniforms, sportswear, cotton-padded jackets, down jackets, workwear, jackets, uniforms, trench coats, cashmere coats, and plackets for polo shirts.

## 全自动激光开袋机 Automatic Laser Pocket Opening Machine



### 机器参数 Parameters

型号: Model:	GOA-IS,NM-1-235×40-A-NA-1P220
机针: Machine Needle:	MT190(12#, 14#, 16#)
针距: Stitch Spacing:	0.05mm-12.7mm
压脚提升高度: Presser Foot Lift Height:	60mm-80mm
存储容量: Storage Capacity:	最多可存储999种 Up to 999 can be stored
缝制速度: Sewing Speed:	10-15秒/个 10-15 seconds/piece
折袋方式: Pocket Folding Method:	四个方向同时进行折袋 Folding pockets in four directions simultaneously
开袋方式: Pocket Opening Method:	100W激光切割 100W Laser Cutting
最高缝制速度: Maximum Sewing Speed:	3000RPM
缝制范围: Sewing Range:	X方向60mm-235mm; Y方向8mm-40mm X direction 60mm-235mm; Y direction 8mm-40mm
功率: Power:	850W
电压: Voltage:	AC 220V,50Hz
气压: Air Pressure:	0.5MPa
机器尺寸: Machine Size:	2100×1350×1460mm
净/毛重: Net/Gross Weight:	650KG/750KG
包装尺寸: Packaging Size:	2200×1450×1760mm

### 天津再登高智能制造有限公司

地址: 天津宝坻经济开发区天宝南环路3号B楼

邮箱: sales@getonagain.com

网址: www.GetonAgain.com

**400-166-8581**

### Tianjin GetonAgain SM Co., Ltd.

Address: Block B, No.3, Nan Huan Road, Economic Development Zone,  
Baodi, Tianjin, China.

Email: sales@getonagain.com

www.GetonAgain.com