

Supernest
GetonAgain Garment Marker CAD V2023.1

User Manual

Shenzhen GetonAgain Software Co., Ltd.

Address: Room 20B, Block A, Haiwang Building, No. 2221 Nanhai Road,
Nanshan District, Shenzhen, China.

Tel: +86 159 2203 9334 / 183 2246 7900

Email: cad@getonagain.com

Supernest Manual

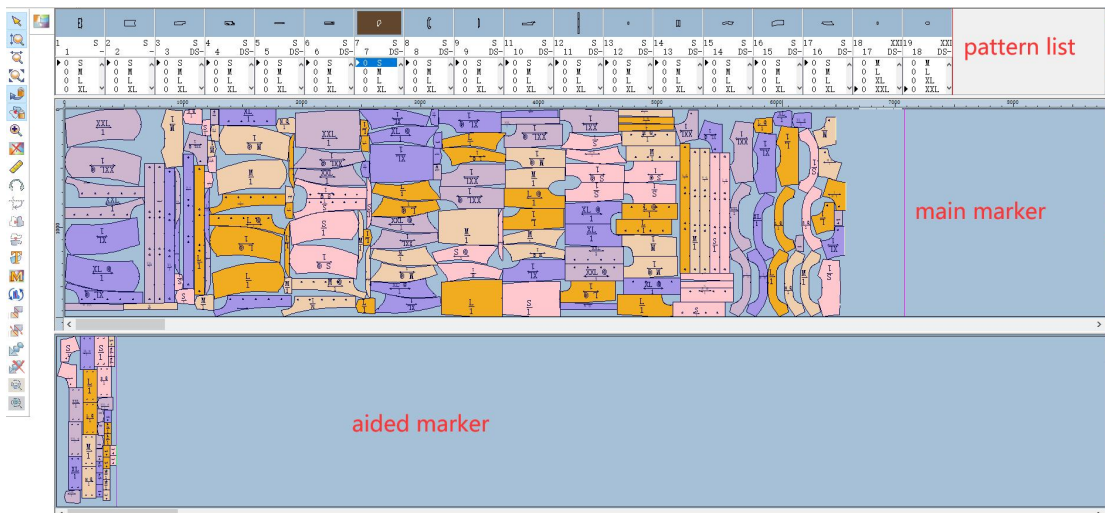
<u>Common Options Explained</u>	错误! 未定义书签。
<u>Pattern Orientation Setting</u>	4
<u>Group Function</u>	7
<u>Blemish Avoidance Setting</u>	9
<u>Calculation Width</u>	9
<u>Stripe & Plaid</u>	9
<u>Custom</u>	11
<u>Supernest in Queue</u>	1 错误! 未定义书签。
<u>Arrange The Half Pieces And The Pattern Into The Main Marker By One Piece</u>	17

-

【Supernest Dialog】 :

I : Common Options Explained

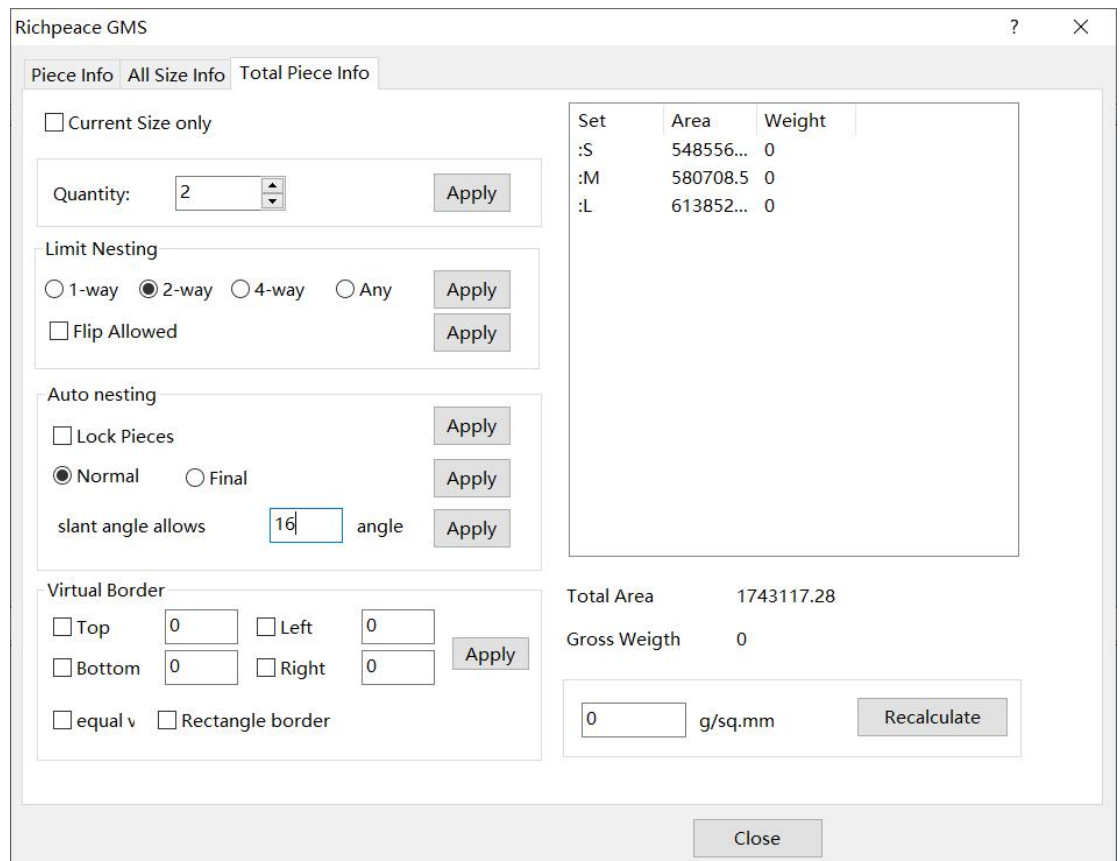
- **Time Minutes:** Fill in the marker supernest time
- **Only nesting main marker pieces:** Only the pattern super nest of the main marker, the aided marker and the pattern list are not nested.



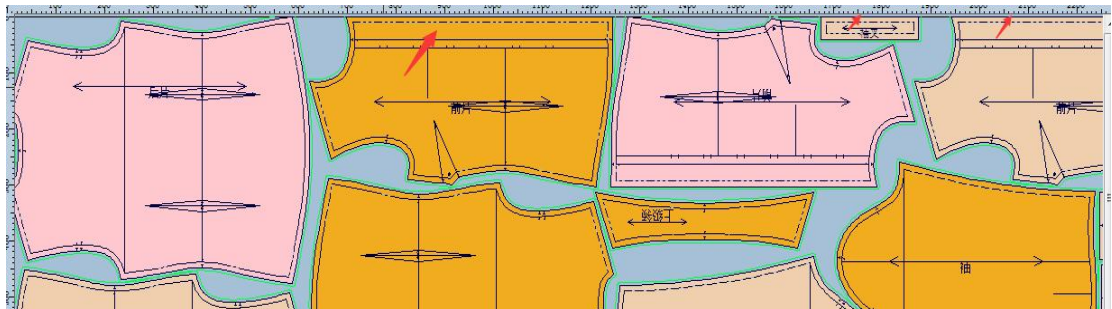
- **Clear aided marker all pieces:** Put the aided marker pattern into the pattern list.
- **Allowed slope:** Minimize the distance between pieces on the marker
- **Allowed compaction:** According to the pattern of the marker, it is determined that the pattern is inclined within the specified angle range. (The tilt range needs to be set in advance)

1) Click Piece info  -Total Piece Info, Enter the slant angle in

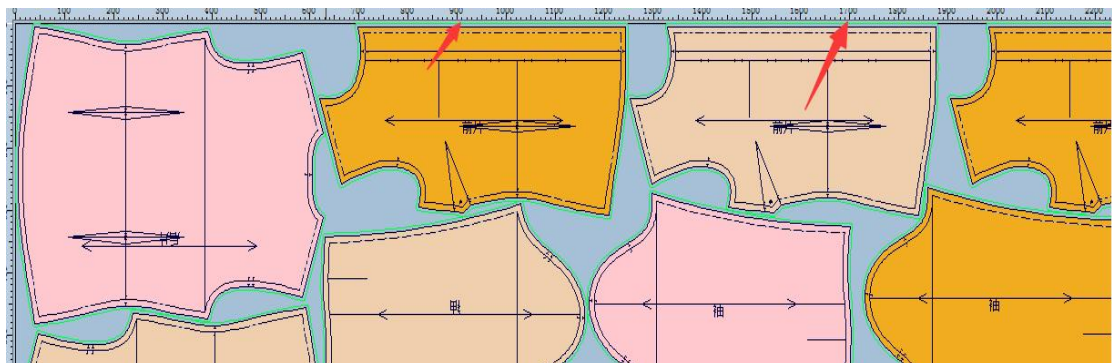
slant angle allows.



- **Buffer Border:** Tick Buffer Border, and the blank positions of the pattern near the left border, top border and bottom border of the marker do not participate in the nesting.

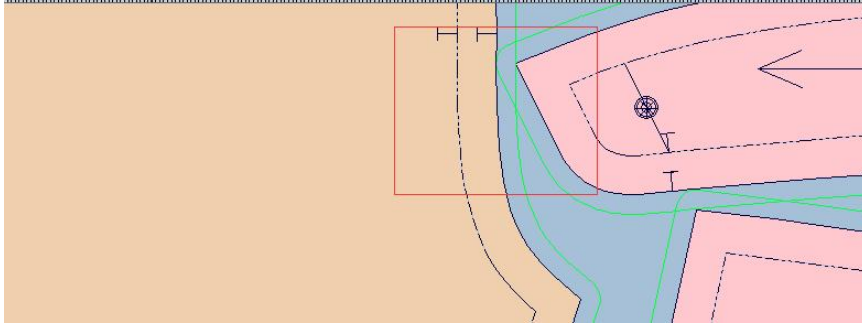


Tick Buffer Border

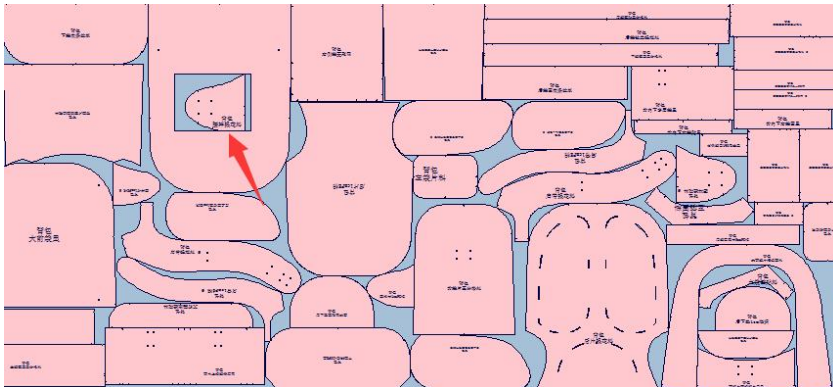


Not Tick Buffer Border

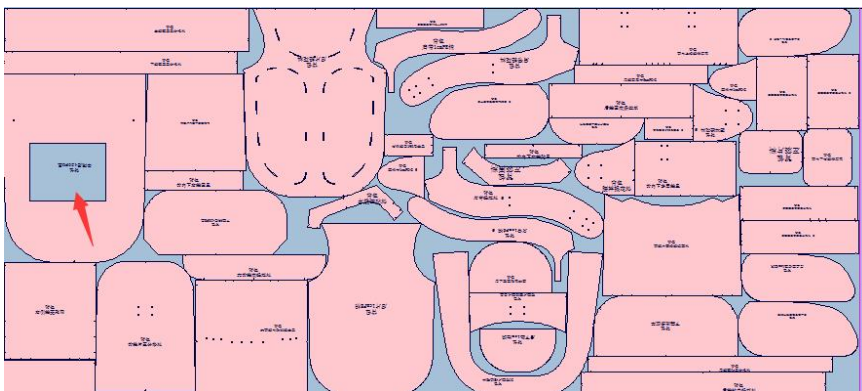
- **Overlap:** Overlap needs to select Buffer Border first, and the virtual position will overlap when the pattern is nesting.



- **Put piece in the hole of piece:** If selected, other patterns are allowed to be placed in the hollowed-out area; if not selected, other patterns are not allowed to be placed in the hollowed-out area.



Select

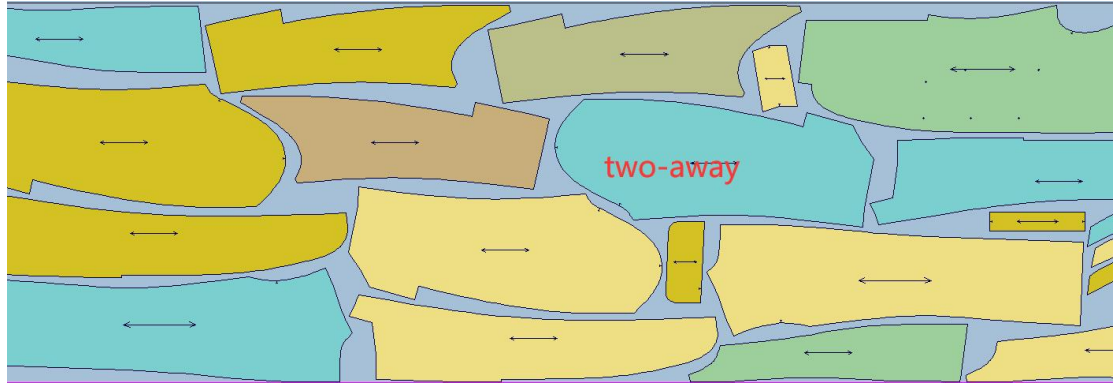


Not select

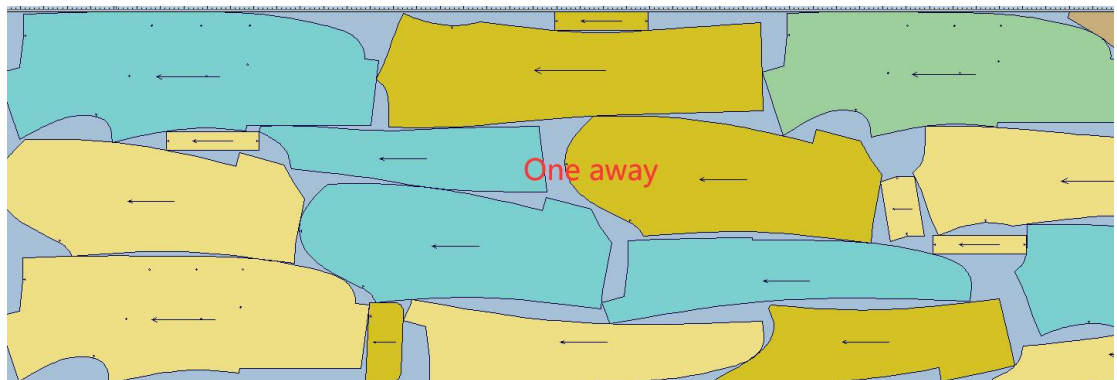
- **Piece Distance (Positive: Separate; Negative: overlap):** Enter a value in the following dialog box. When the input value is a positive number, it is the maximum distance between the pieces, and when it is a negative number, it is the maximum overlap distance.

II: Pattern Orientation Setting

- **same direction all pieces:** When the grain line is two-way, the direction of different sets of patterns of the same size is not limited; when the grain line is one-way, the direction of the same set of patterns of the same size is the same.

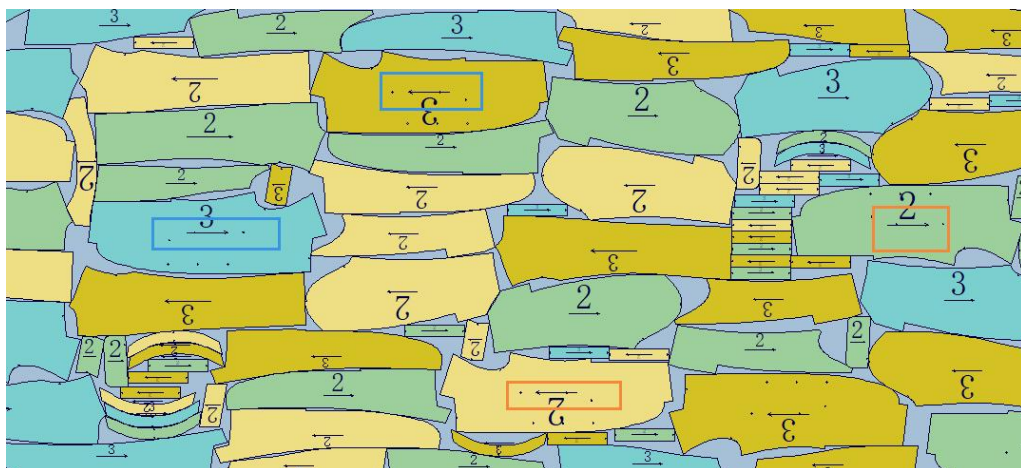


(Two-away)

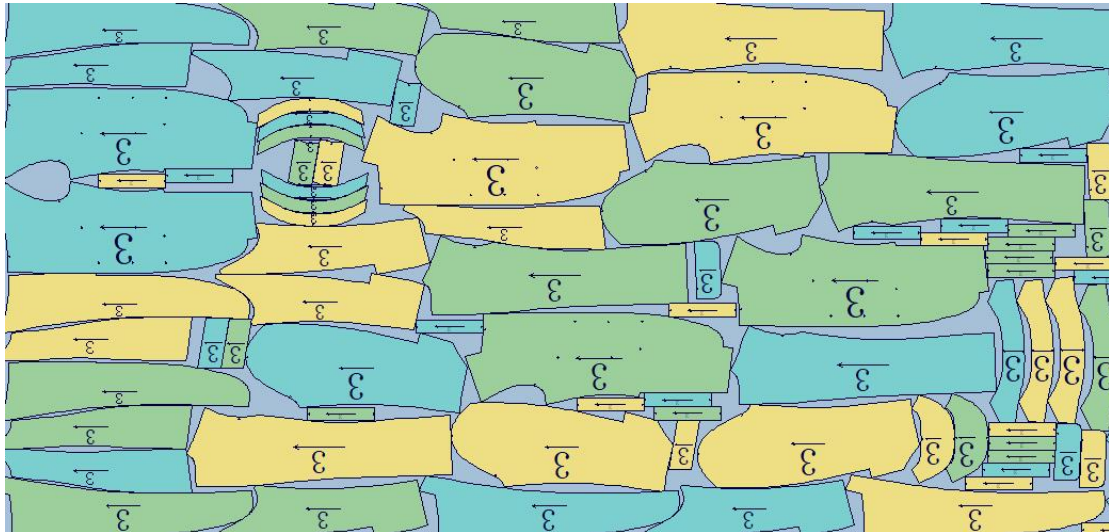


(One-away)

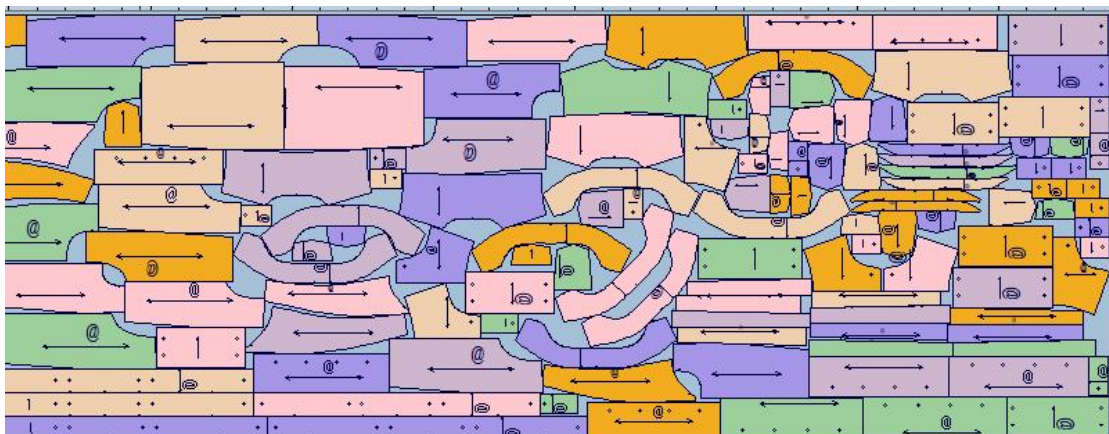
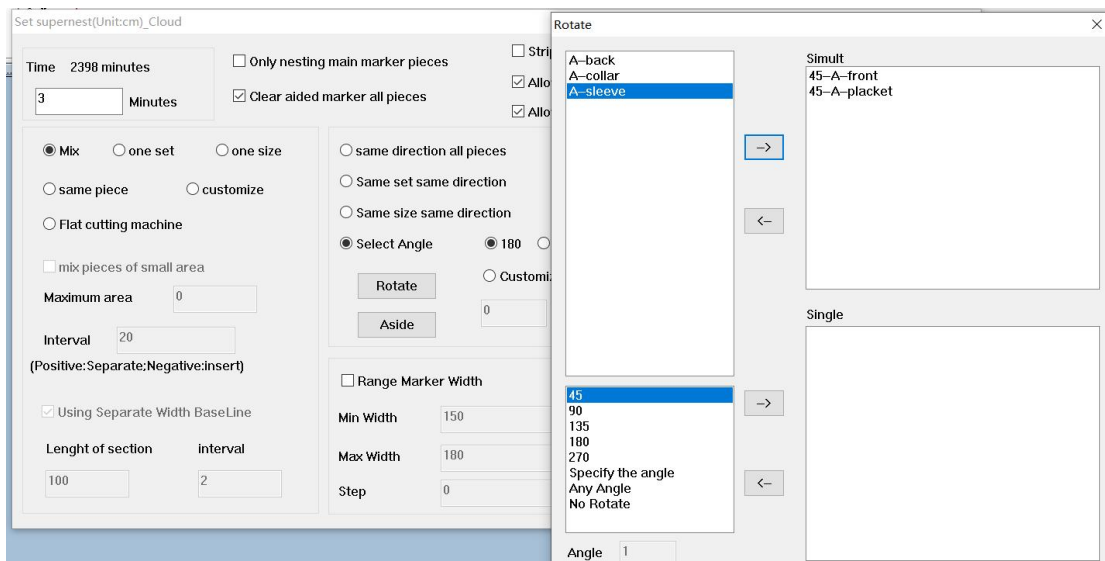
- **Same set same direction:** The same size and the same set of patterns keep the same orientation. The pattern direction of the same set (piece) between each yards shall be consistent. For example, S has two sets (pieces), then the direction of 1 is the same, and the direction of 2 is the same.



● Same size same direction: Patterns of the same size have the same orientation.

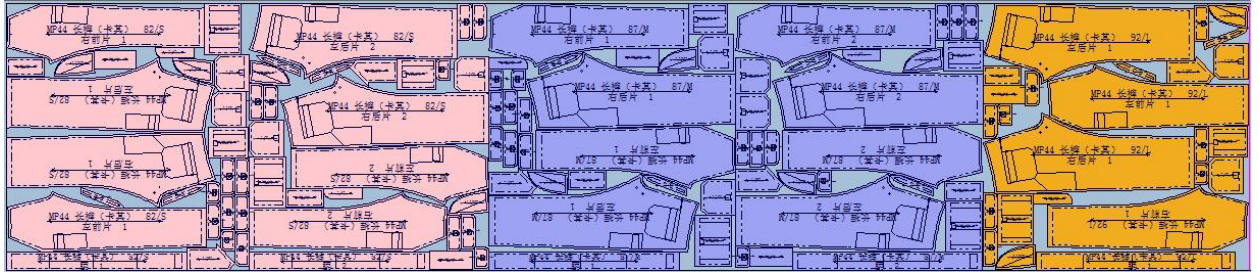


● Select Angle: Choose from 180, 90 or 45. Assuming that 45 is selected, each piece on the marker will be rotated at 45 degrees, looking for a suitable angle (that is, the possible rotation angle of the pattern is 45, 90, 135, 180, 225, 270, 315, 360) and you can also choose "Rotate", the specified piece, while rotating the given angle.

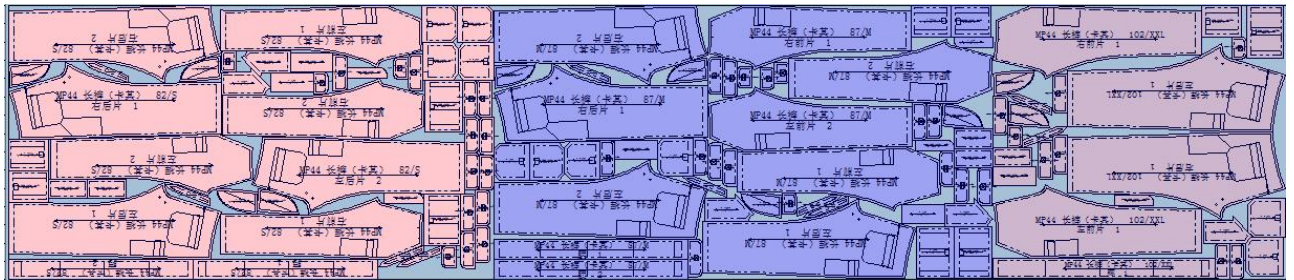


III: Group Function

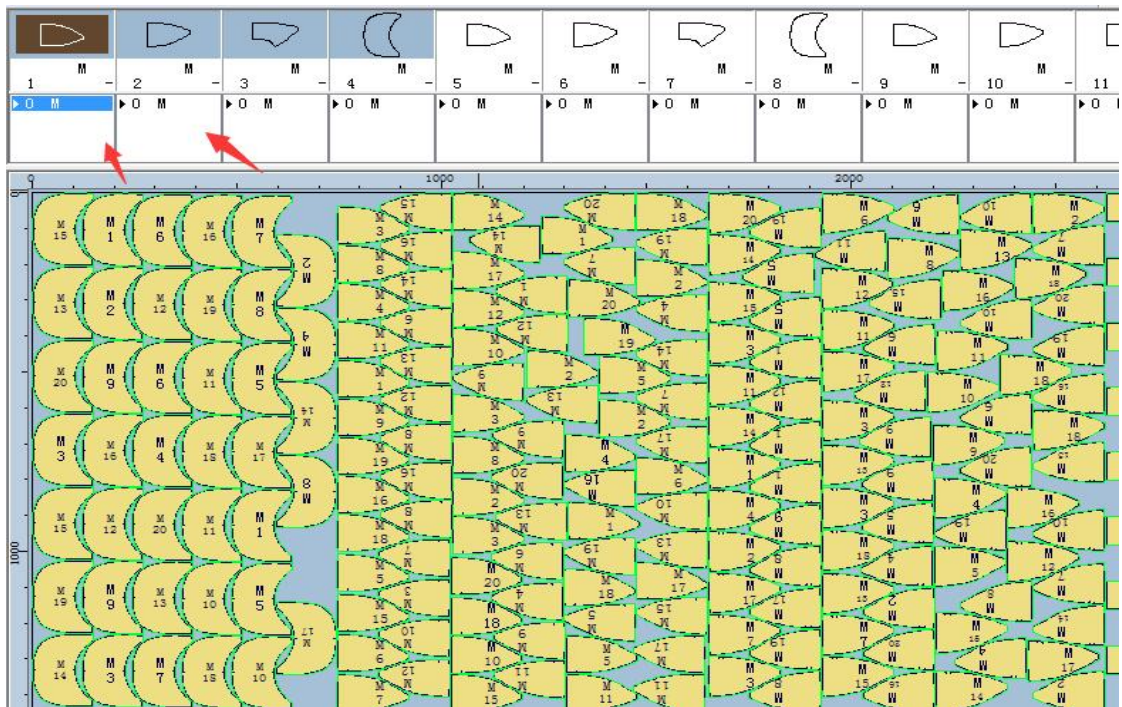
- **Mix** : Regular nesting, no specific segment restrictions.
- **Set**: Each piece (set) is segmented in the length direction, and one set (piece) of a yard is arranged, and then another piece is arranged.



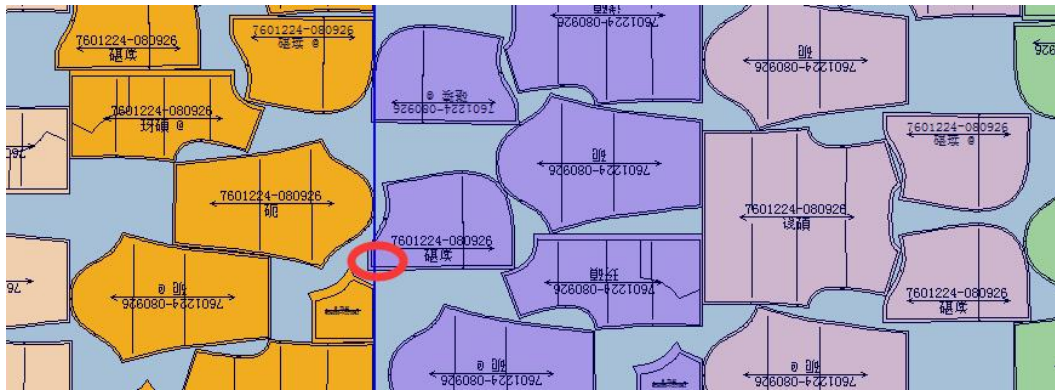
- **Size**: Segmentation in the length direction according to the code, after each code is arranged, another code is arranged.



- **Piece**: The same pattern is divided into one section, and the order is arranged in the order of the pattern list box



● Interval (Positive:Separate;Negative:insert)



Positive



Negative

● mix pieces of small area mix pieces of small area , Maximum

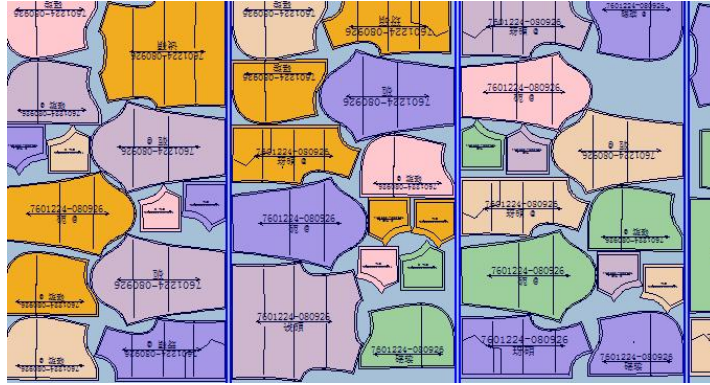
area : Patterns smaller than the set maximum area can be arranged across sections

● Flat cutting machine: Input the Length of section and Interval, and the pattern will be laid out in the specified length for the flatbed cutting machine.

Using Separate Width BaseLine

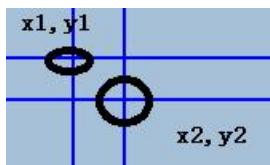
Length of section	interval
<input type="text" value="100"/>	<input type="text" value="2"/>

Using Separate Width BaseLine



●Customize—See Chapter 7 for an introduction to Customize.

IV: Set material flow



Enter the distance, the formed rectangle is the defective part, and there is no paper pattern inside the rectangle



V: Range Marker Width

Input Min width, Max width and step, and the system will find out the most suitable width according to the overall number of samples, and obtain a marker with high efficiency.

Range Marker Width

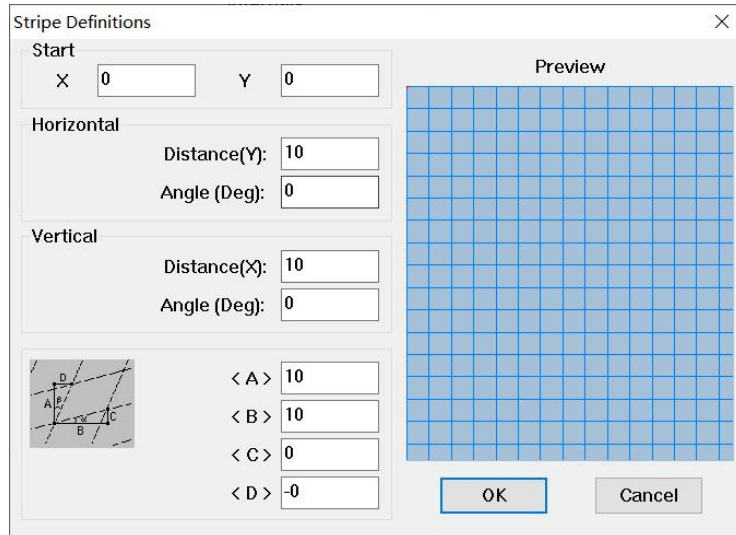
Min Width

Max Width

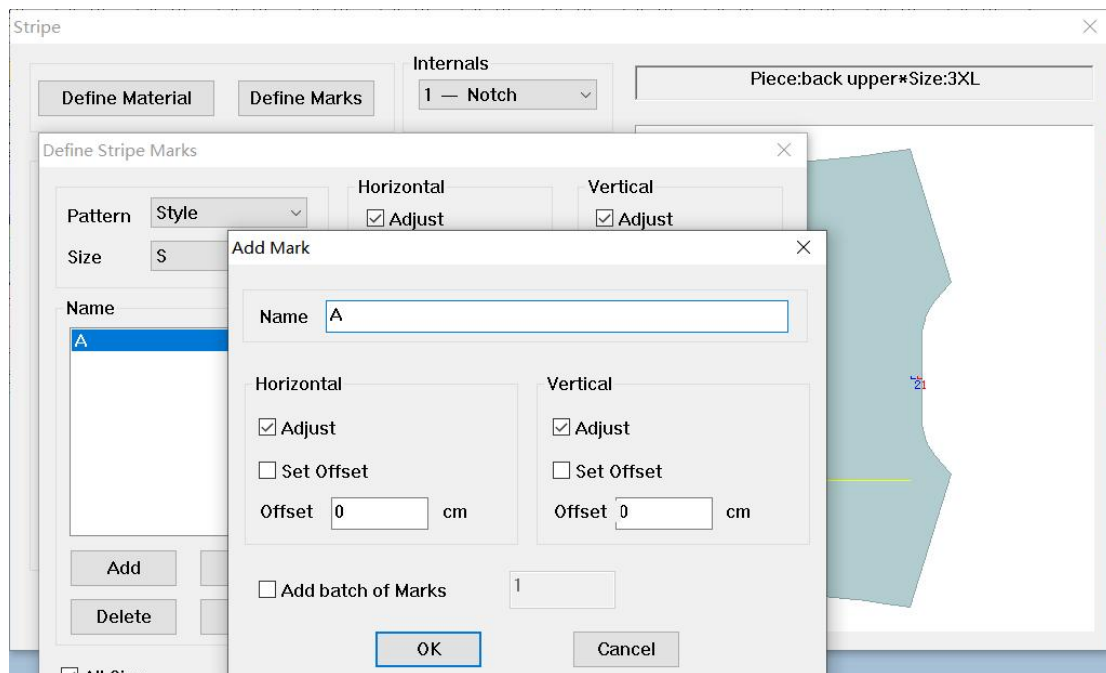
Step

VI: Strip

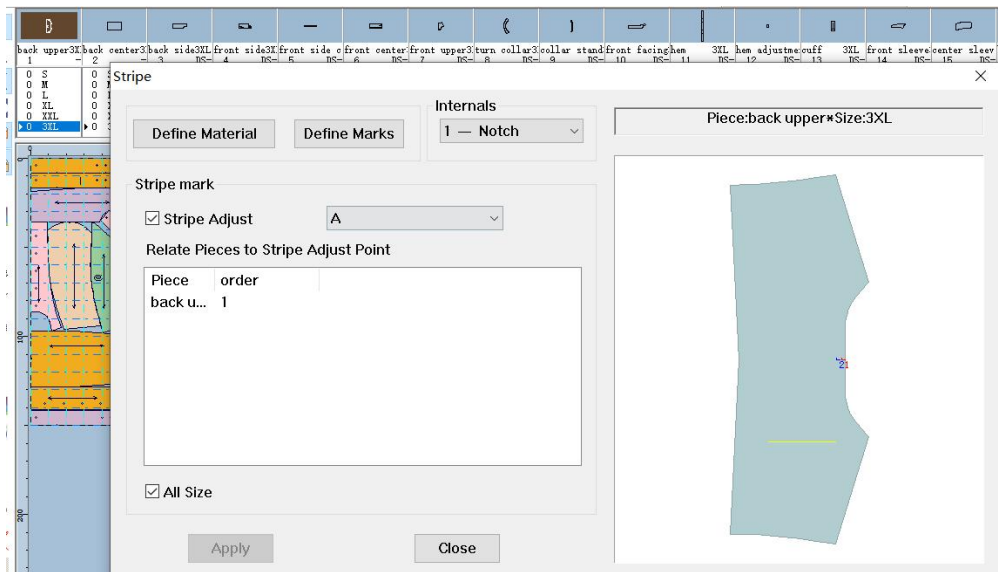
- 1) Click the "Options" menu, select "Show Strip", "Adjust Strip";
- 2) Click "Marker" and select "Define Strips";
- 3) Click "Define Material", Enter the horizontal and vertical distance;



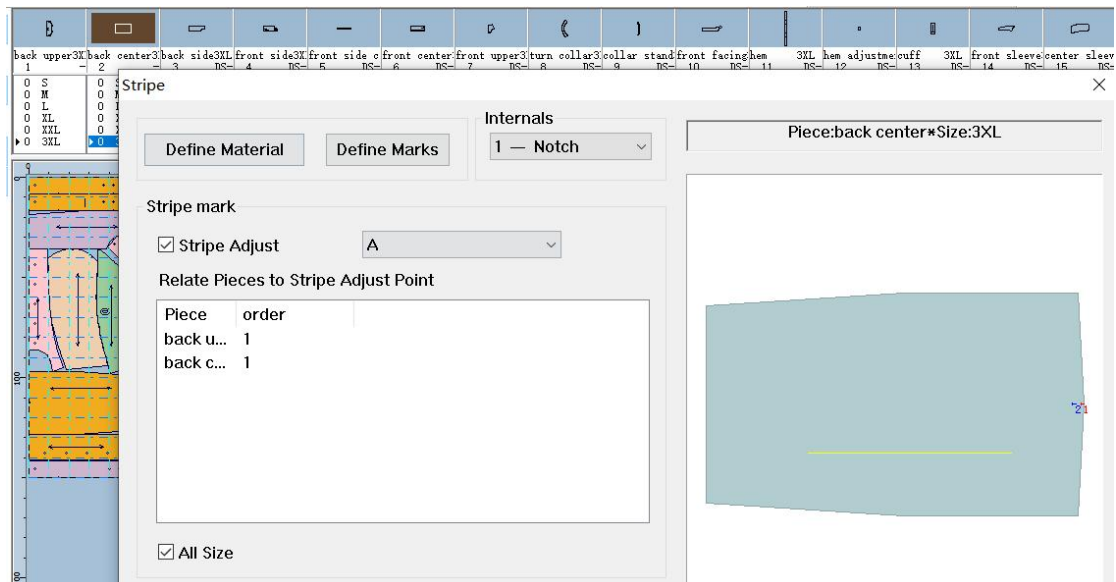
- 4) Click "Define Marks", Click "Add", edit the name, and set strip horizontally or vertically:



- 5) Select the front piece pattern, select "Internals", select "Stripe Adjust", and click Apply;



6) In the same way, select the back piece pattern and select "Internals", select "Stripe Adjust", and click Apply.



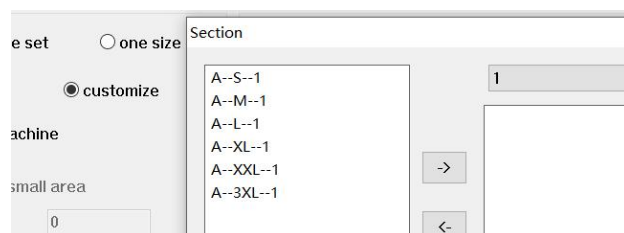
7) Refer to steps 4 to 6 for other patterns;

8) After setting, select Strip in the Super Nest dialog box, click OK, and start Super Nest.

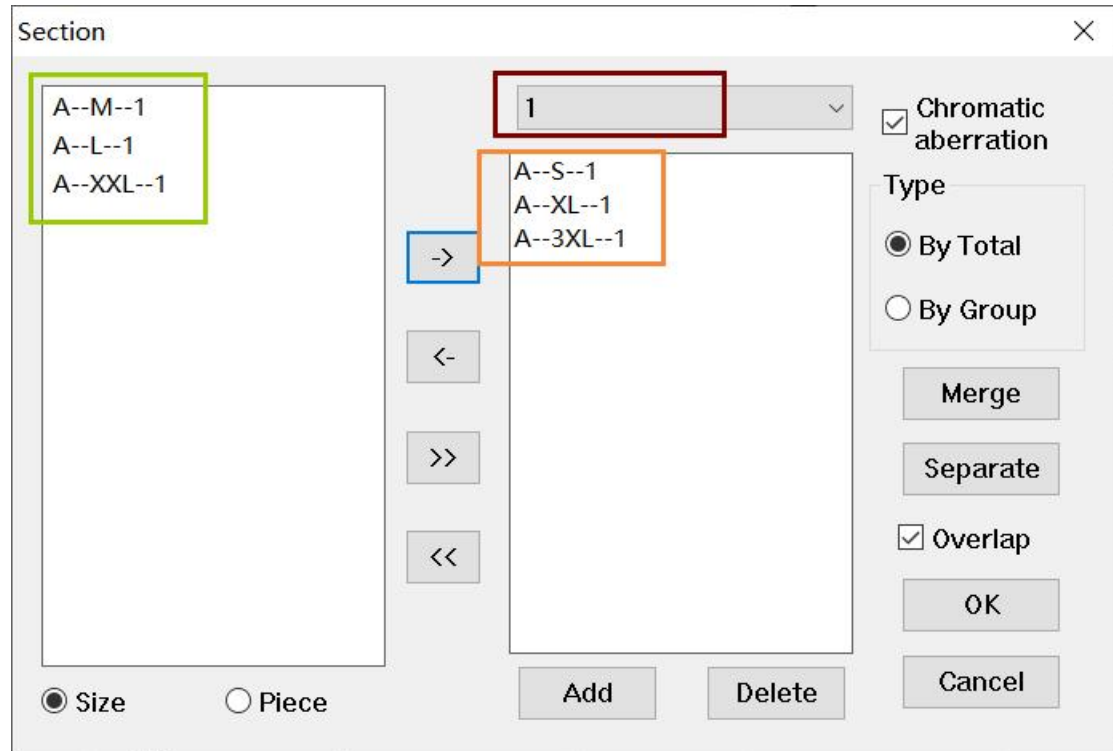
VII: Customize



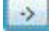
1. Click on Super Nest and select "Customize" in the Super Nest dialog box.


Show dialog:



2. Select Size:



1) Left click on the left border and click a code number, click  can go to the corresponding segment on the right; After selecting a size, press the CTRL key to select multiple sizes, and then click ; Select the first size and press the SHIFT key to select all the sizes between the first size and the last size .


 The size selected on the right returns to the left

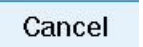
 All dimensions to the right

 All dimensions to the left

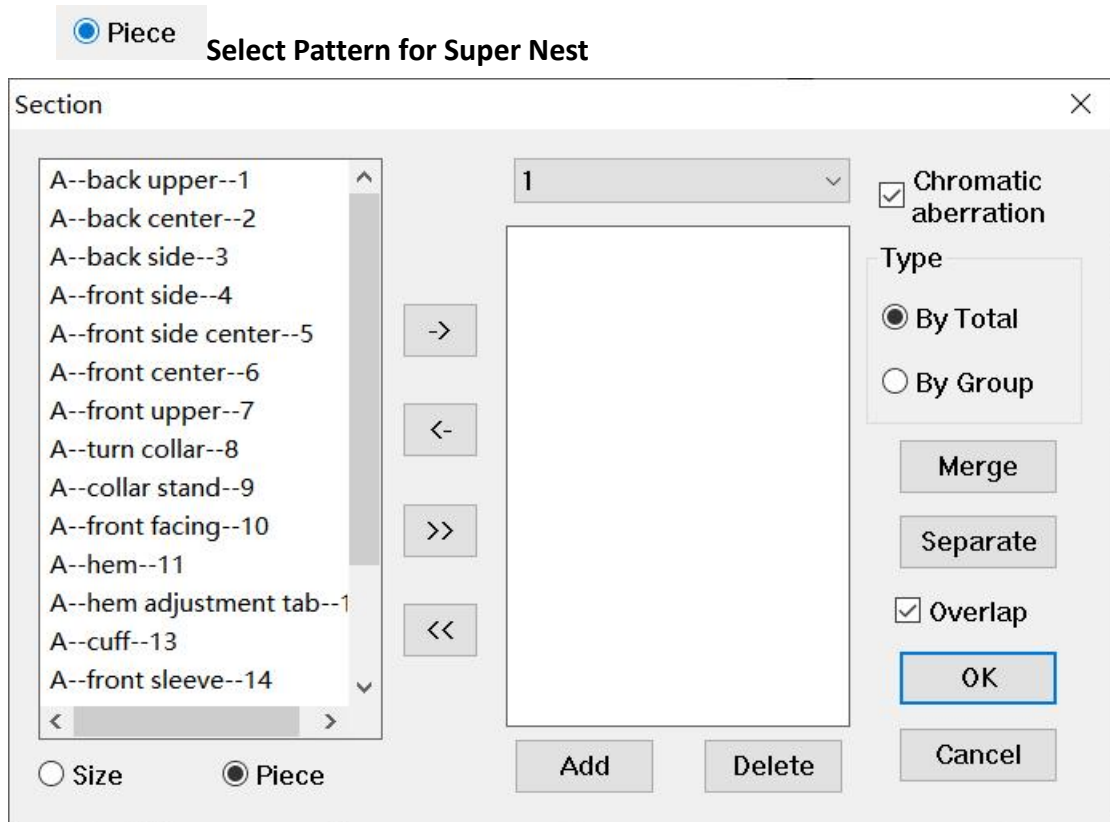
2)  Here is which size to put in which section,

After each section is selected, click Add  ;  依次类推;

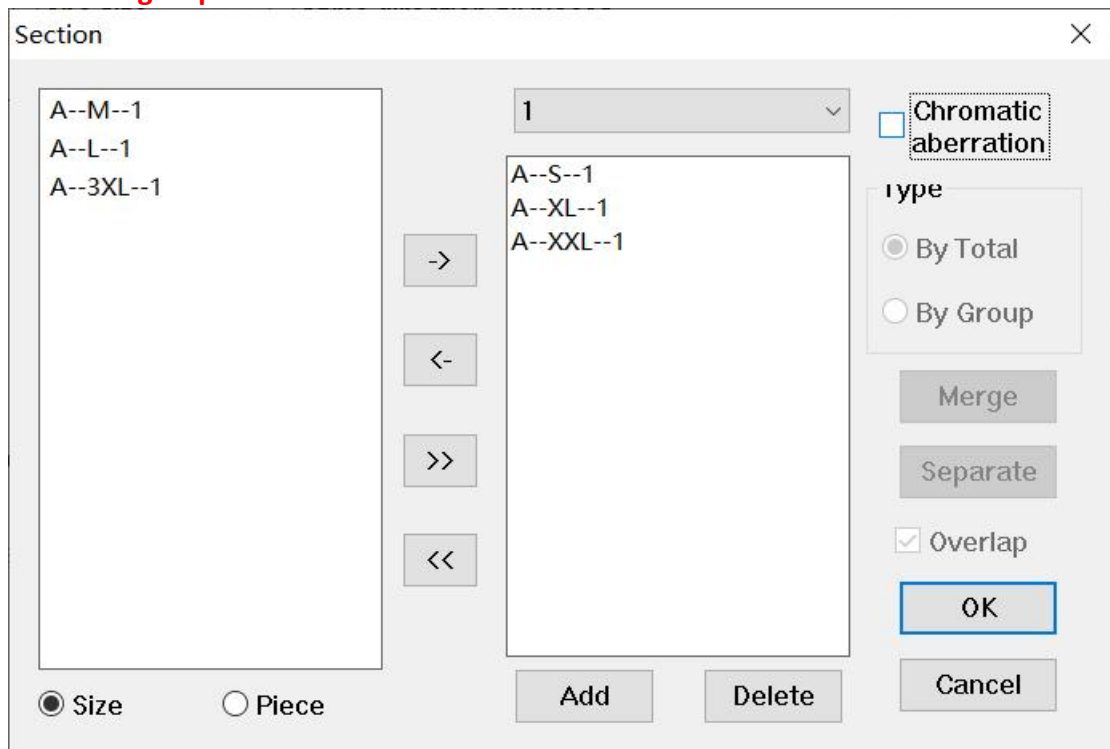
 To cancel the current segment

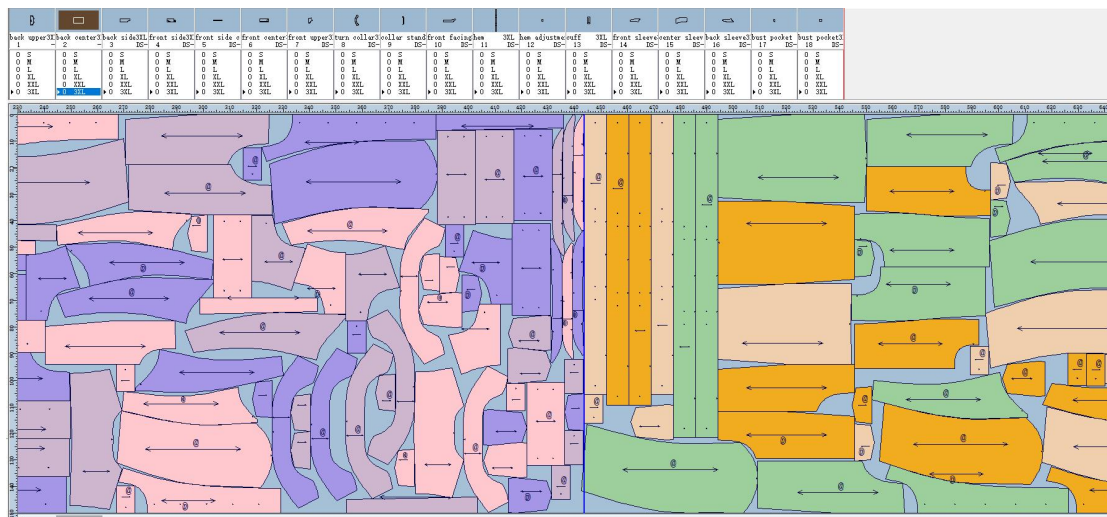
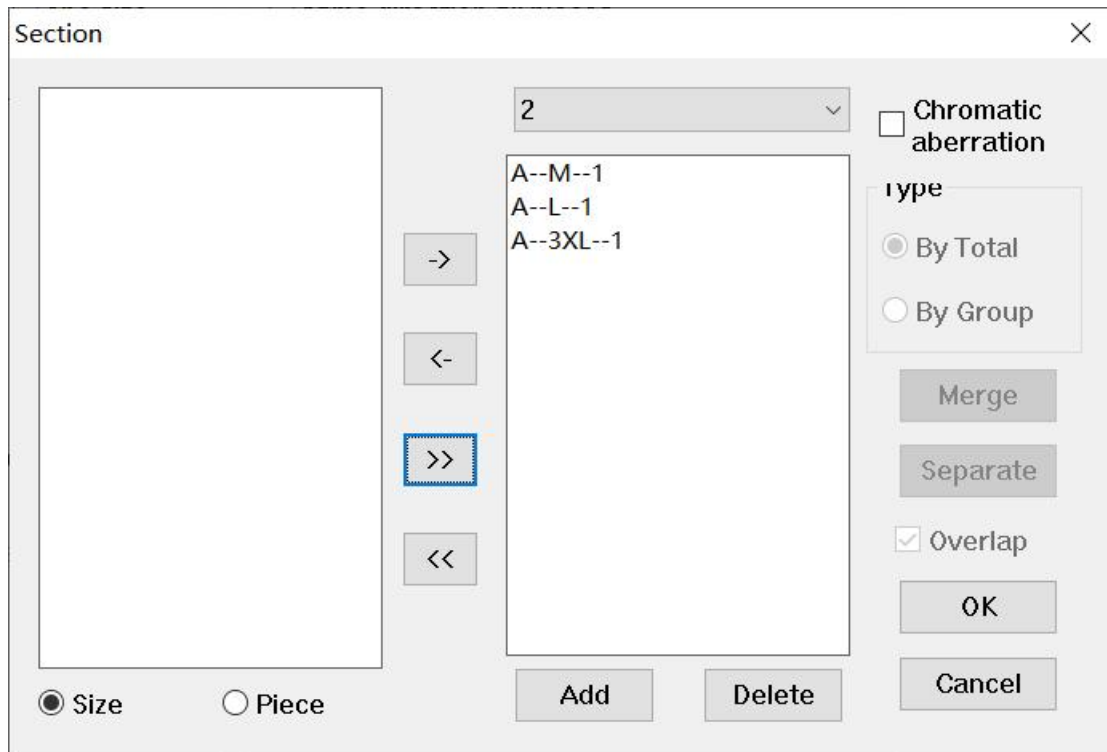
 Window closed, no Super Nest

3.  **Select Size for Super Nest;**

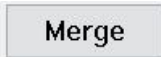


4. Chromatic aberration is not selected, grouped in the length direction, mixed in the same group



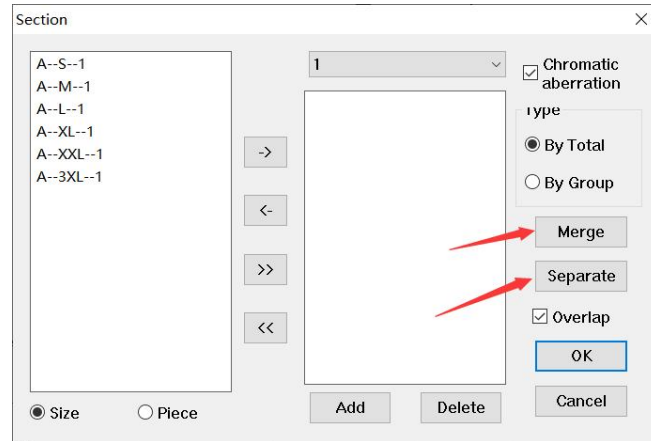


5. Chromatic aberration is selected: Layered in the width direction, grouped in the length direction; The size selection method is the same as step 1 above.

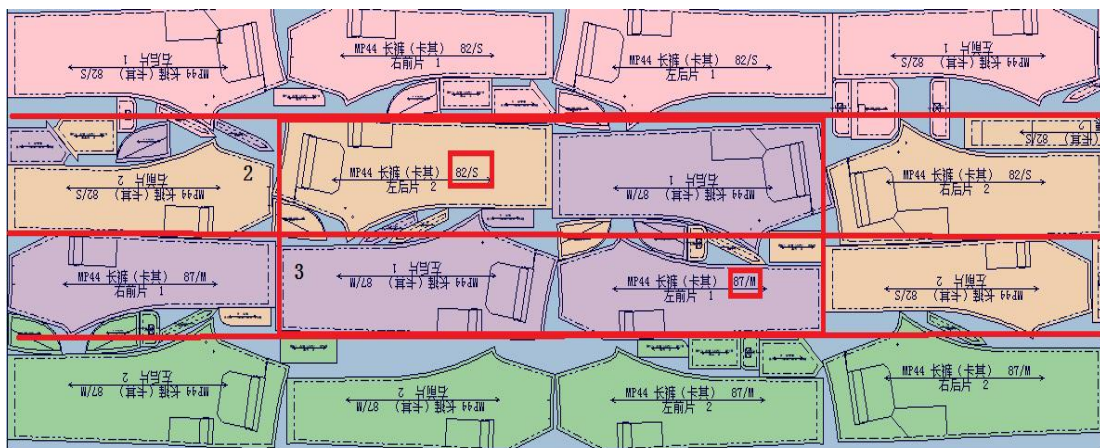
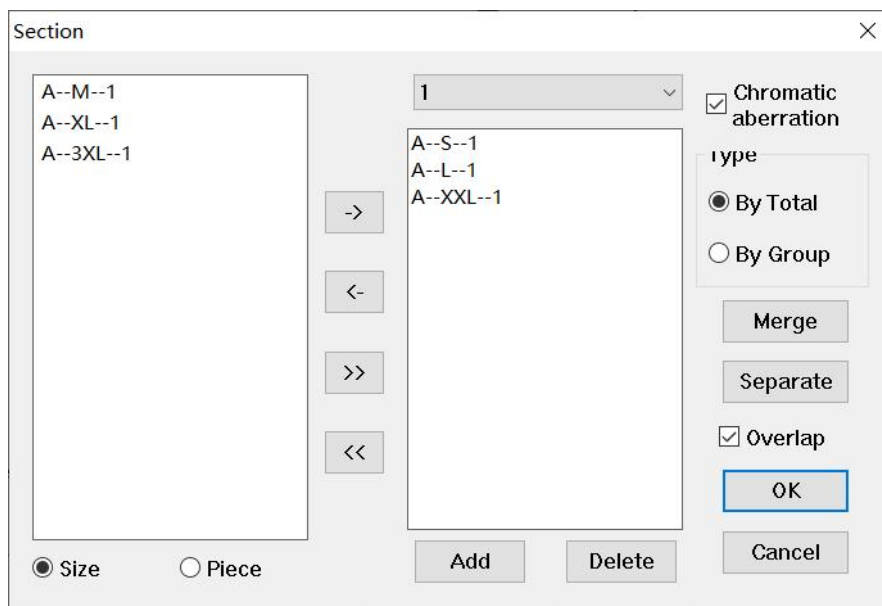
1) If not selected , the normal size is nested sequentially in the cloth width direction; the length direction is grouped;



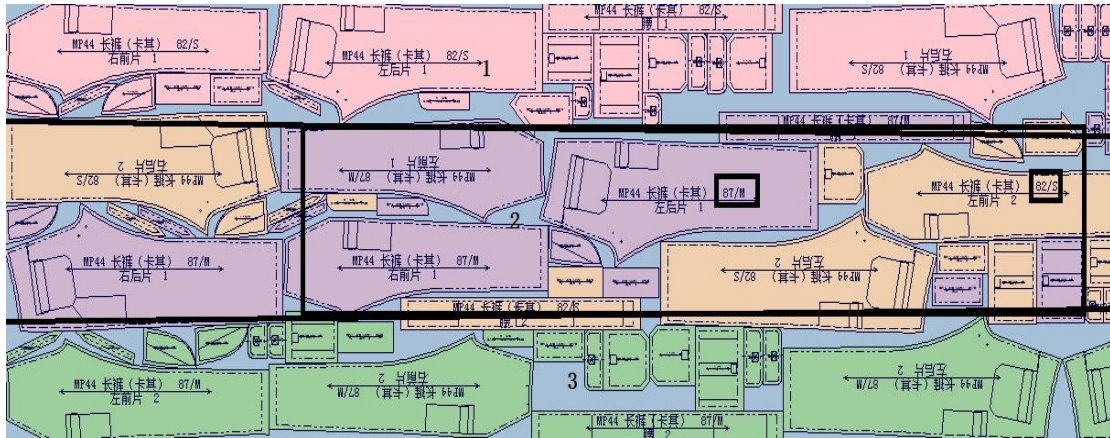
2) The sizes on the right can be combined or separated. Press CTRL or SHIFT to select the sizes to be merged, click **Merge**, also can click **Separate** to separated sizes.



3) **By Total**: Select By Total, if there are several sets, divide the width direction into several layers



- 4) **By Group** : If you choose By Group, divide the width into several layers if there are several groups



- 5) **Overlap** : There must be overlapping between layers; if not selected: it will be determined whether to overlap according to whether the pattern with the largest width can be placed.

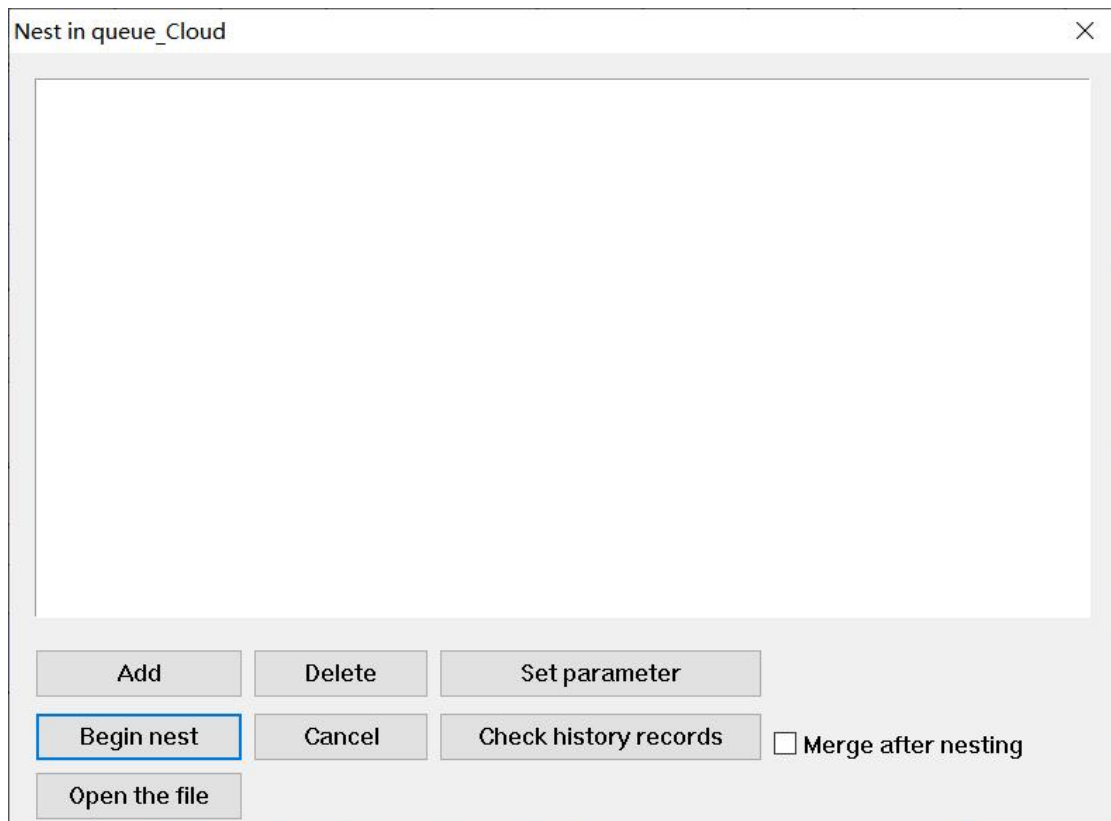
VIII: Nest in queue

Function:

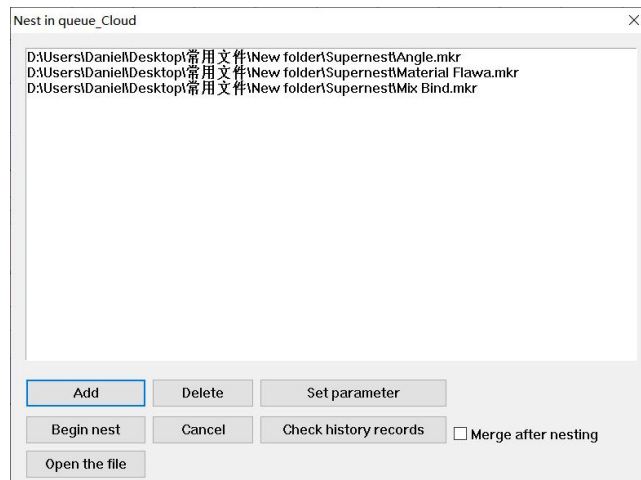
Queue super nests on a marker.

Operate:

1. Click Nest—Nest in queue to display the Nest in queue dialog box;



2. Click “Add”, Open the marker that needs super nest, as shown below;



3. Click “Begin nest” to start super nest.

[Nest in queue] parameter description:

1) Add: Add a marker file that needs a super nest; and display the added marker file with a transparent text background on the entire line; at the same time, the status bar information is “waiting”, the efficiency is “-” because it is unknown, and the file name column shows the currently added file The full path of the marker file;

2) Delete: Delete marker files that do not require super nests;

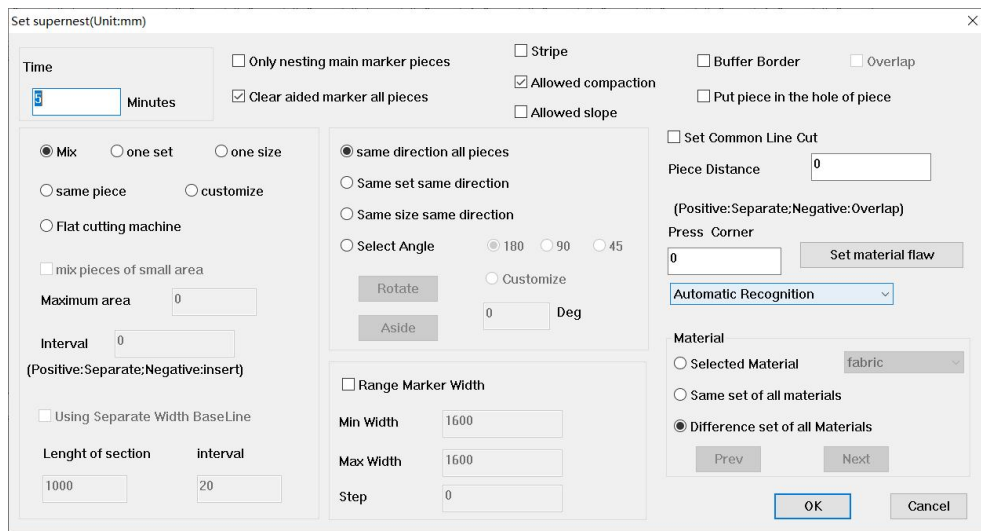
3) Set parameter: After selecting a marker pattern in the list, you can set the parameters of this marker pattern, click to pop up the setting interface, which is mostly the same as the general interface that pops up when you click “Super Nest”, the difference is that you can set it in the lower right corner cloth to choose;

Selected Material: The selected fabric is nested according to the current settings;

Same set of all materials: All fabrics in the style are nested according to the current settings;

Difference set of all Materials: Different nesting parameters can be set for different fabrics in the style;

Prev、Next: Choose the fabric

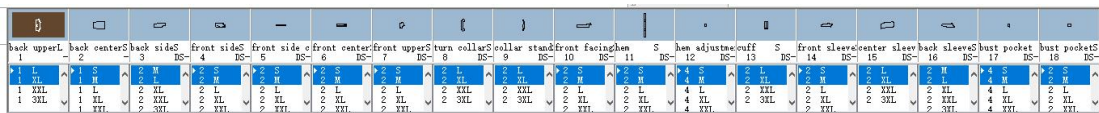


- 3) Open the file: Open the selected marker file;
- 4) Merge after nesting: After checking, the markers will be automatically merged into one marker, and the files will be separated by baselines;
- 5) Begin: Start super-nesting the files in the list box from top to bottom; at the same time, the bottom of the window will expand to display the information currently being super-nested;
- 6) Cancel: The added marker files will be all cleared;
- 7) Check history records: View all your Nest in queue records;
- 8) Drag the file up or down to move the file up or down.


IX: Arrange half sets and only one piece of pattern into the main marker

Take half of the pattern from the pattern frame for nesting; you can also put a piece of the pattern corresponding to the size on the main marker.

- 1) Select a pattern in the pattern window, you can drag to select, or you can left-click the first piece, hold down SHIFT and left-click the last piece at the same time.



- 2) Press shift+right button, put half set of the selected pattern into the main marker;
- 3) Press Ctrl+Right button, put one piece of the selected pattern into the main marker, which is mostly used for printing the first pattern.

- 4) Select Super Nest Tool , Set the time and so on in the dialog box,

and pay attention to the selection Only nesting main marker pieces of Super

Nest.