

多孔打枣机



机器特点

- 触摸屏电控一体机，可自由设置缝线花型。
- 压手缝框同步工作，保证打枣高精度。
- 机头自动升降，提升高度150mm。
- 打枣工作时无需特意固定垫子，轻松放到缝框中即可。
- 实现准确定位。
- 缝制线迹一致性好，质量稳定。

主要参数 Parameters

型号: Model:	GOA-IS,300×200-ALH150-1P220	花样读取方式: Pattern Input:	USB
可缝制线迹花型: Bar-tacking Stitch Type:	直线、圆圈、十字、米字、打结(圆点) Straight line, Round, Cross, Star and Round radial bartack	最高转速: Maximum Speed:	1500rpm
机针: Needle:	DP*17 18-25#	功率: Power:	750W
电压:		电压: Voltage:	AC 220V 50Hz
线迹类型: 单针锁式线迹 Stitch: Single Needle Lockstitch	气压: Air Pressure:	0.6-0.8mpa	机器尺寸: Machine Size(L×W×H):
			1340×1210×1700mm
可缝制圆圈直径范围: Sewing Circle Diameter Range:	0-30mm	毛重: Gross Weight:	260kg
		可缝制范围尺寸: Sewing Size Range:	L300×W200(mm)
可缝制垫子厚度: Thickness of Sewn Cushion:	≤125mm	净重: Net Weight:	200KG
		包装尺寸: Packaging Size(L×W×H):	1420×1210×1830mm

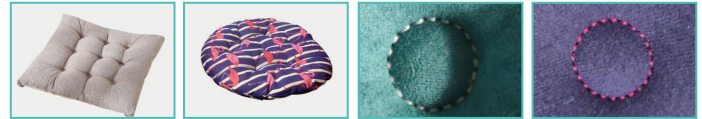
Multi-hole Bar-Tacking Machine

适用范围

坐垫、靠垫、抱枕等填充类产品的打枣工艺加固缝绉。

Application

Suitable for chair pad, cushion and pillow, all those with fillings and bar-tacking requirement for reinforcing sewing work.



Features

- Touch screen panel and control all-in-one, freely to set the sewing stitches type.
- Press arm and sewing frame work synchronously, ensure high precision bar-tacking.
- Machine head auto lifting, raising up in 150mm height.
- No need specially to fix the pad material during bartacking work. Easily place to sewing frame.
- precise positioning is achieved right away.
- Bar-tacking stitches are good consistency and stable quality.

天津再登高科技股份有限公司

地址: 天津宝坻经济开发区天宝南环路8号4层
邮箱: sales@getonagain.com
网址: www.GetonAgain.com

400-166-8581

Tianjin GetonAgain Co., Ltd.

Address: 4/F. No. 8, Nan Huan Road, Economic Development Zone, Baodi, Tianjin, China.
Email: sales@getonagain.com www.GetonAgain.com