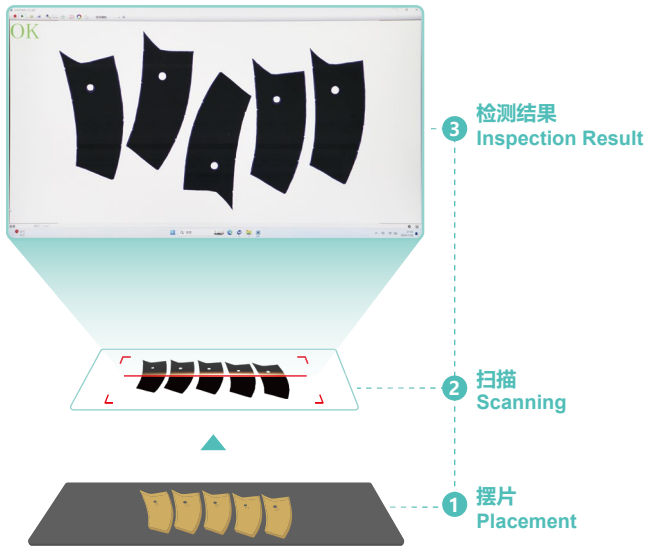


## 裁片视觉检测仪

## Cutting Piece Vision Inspection Equipment



## 机器特点

- 人工摆片后一键启动，可自动扫描-自动检测裁片-自动存储数据。
- 扫描速度最高可达120mm/s，无需额外补光，全天候可靠使用。
- 扫描分辨率150-300DPI，高清全景1:1图像确保裁片内外轮廓清晰可见。
- 自动识别裁片形状，自动调取相应裁片信息。
- 检测裁片尺寸是否合格，标记裁片不合格位置并给出误差值。
- 将检测结果相关信息和图片进行保存，便于质量管控与后期追溯。
- 采用一体式机架和龙门式结构，保证整机稳定高效运行。

## Features

- After manual placement, one-click start allows for automatic scanning, automatic inspection of cut pieces, and automatic data storage.
- Scanning speed can reach up to 120mm/s, with no need for additional lighting, ensuring reliable use in all-weather conditions.
- Scanning resolution is 150-300 DPI, and the high-definition panoramic 1:1 image ensures that the inner & outer contours of the cut pieces are clearly visible.
- Automatically identify the shape of the cut piece and automatically retrieve the corresponding cut piece information.
- Check whether the dimensions of the cut pieces are qualified, mark the locations of the unqualified cut pieces, and give the error values.
- Save the relevant information and images of the inspection results to facilitate quality control and future traceability.
- Adopt an integrated frame and gantry structure to ensure stable and efficient operation of the entire machine.

## 适用范围

主要适用于汽车内饰皮革、复合皮革等裁片的扫描检测。

## Application

Mainly suitable for the scanning and inspection of cut pieces such as automotive interior leather and composite leather.



## 裁片视觉检测仪 Cutting Piece Vision Inspection Equipment

### 推荐型号 Models

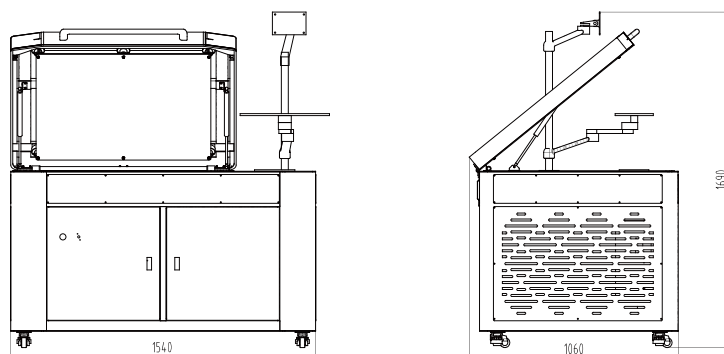
| 推荐型号<br>Models                               | 工作面积<br>Working Area(mm) | 占地面积<br>Machine Size (L×W×H) |
|--|--------------------------|------------------------------|
| GOA-FP-1-2, FP-NM-DI-1-820x820-SGSF-NA-1P220 | 820mm×820mm              | 1540mm×1060mm×1690mm         |

### 机器参数 Parameters

|   |  |
|---|--|
| 有效工作面积:<br>Effective Working Area:  | 820mm(X)×820mm(Y)  |
| 识别误差: ≤0.3mm(实际精度受材料边缘光滑度影响)<br>Recognition Tolerances: ≤0.3mm(Actual accuracy is affected by the smoothness of material edges) |  |
| 操作系统要求: 适配WIN10/WIN11<br>Operation System: Suit for WIN10/WIN11   | 工作方式: 接触式扫描<br>Working Mode: Flatbed Scanning                                    |
| 数据接口: USB2.0<br>Data Port:  | 适用裁片厚度: ≤10mm<br>Suitable Cut Pieces Thickness:                                  |
| 基础文件类型: 支持标准DXF/BMP文件<br>Basic File Types: Support Standard DXF/BMP format  | 扫描材质: 单层皮革或复合皮革<br>Scanning Materials: Single layer leather or composite leather |
| 扫描分辨率: 最高300DPI<br>Scanning Resolution: Max. 300DPI   | 功率: 0.8kW<br>Power:  |
| 扫描速度: 最高120mm/s<br>Scanning Speed: Max. 120mm/s   | 净重: 220KG<br>Net Weight:   |
| 裁片固定方式: 压覆<br>Cut Piece Fixing: Pressure overlay  | 电源: 单相AC220V±10% 50/60Hz<br>Power Supply: 1P AC220V±10% 50/60Hz                  |

### 设备摆放示意图 Equipment Layout Diagram

单位 / Unit: mm



天津再登高科技股份有限公司

地址: 天津宝坻经济开发区天宝南环路8号4层

400-166-8581

Tianjin GetonAgain Co., Ltd.

Address: 4/F. No. 8, Nan Huan Road, Economic Development Zone, Baodi, Tianjin, China.