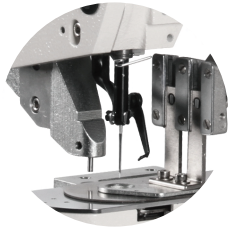


电脑自动冲孔菊花眼一体机

Computerized Automatic Punching and Grommet Eyelet Machine



随机多种冲孔模具及缝制尺寸(可选配)
Bundled with multiple punching molds and sewing sizes
(various selectable configuration).

机器特点

- 菊花眼加冲孔一次性完成。
- 菊花眼缝制圆润饱满、冲孔精准无毛边。
- 可根据客户需求，定制不同冲孔模具，实现一机多用。
- 效率：连缝带冲6-10个/分钟（按130针左右算）。
- 常规尺寸：（内孔/外径）3/7mm；4/8mm；5/8mm；5/10mm。

适用范围

- 军品系列-迷彩服(装饰孔和透气孔)
- 螺纹布系列-卫衣(领口穿绳孔)
- 休闲系列-各类休闲裤(裤头穿绳孔)
- 服装系列-各类服装(透气孔和装饰孔)
- 帽子系列-各类帽子(装饰孔和透气孔)
- 鞋子系列-各类休闲鞋(鞋带孔、装饰孔和透气孔)

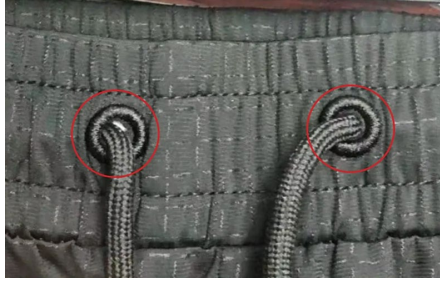
Features

- Grommet punching and hole punching are completed in one step.
- Grommet stitching is smooth and full, with precise punching and no rough edges.
- Customizable punching molds can be tailored to customer requirements, enabling one machine to serve multiple purposes.
- Efficiency: 6-10 pieces per minute, including sewing and punching (calculated at approximately 130 stitches).
- Standard sizes (inner hole/outer diameter): 3/7mm, 4/8mm, 5/8mm, 5/10mm.

Application

- Military series: Camouflage uniforms (decorative holes and air holes).
- Knitted fabric series: Hoodies (drawstring holes on the neckline).
- Casual series: Various casual pants (drawstring holes on the waistband).
- Clothing series: Various garments (air holes and decorative holes).
- Hat series: Various hats (decorative holes and air holes).
- Shoe series: Various casual shoes (shoelace holes, decorative holes, and air holes).

电脑自动冲孔菊花眼一体机
Computerized Automatic Punching and Grommet Eyelet Machine



机器参数 Parameters

型号: Model:	GOA-IS,430D-MO
机针: Machine Needle:	DP×17 11-14#
最高转速: Max. Speed:	2700RPM
电压: Voltage:	AC 220V, 50Hz
气压: Air Pressure:	0.5MPa
功率: Power:	750W
机器尺寸: Machine Size:	1200×780×1400mm
净/毛重: Net/Gross Weight:	130KG/150KG

天津再登高科技股份有限公司

地址: 天津宝坻经济开发区天宝南环路8号4层
邮箱: sales@getonagain.com
网址: www.GetonAgain.com

400-166-8581

Tianjin GetonAgain Co., Ltd.

Address: 4/F. No. 8, Nan Huan Road, Economic Development Zone,
Baodi, Tianjin, China.
Email: sales@getonagain.com www.GetonAgain.com