

平板喷墨切割一体机

Flatbed Inkjet Cutting Plotter



机器特点

- 兼容两种数据传输方式：RJ45网口连接，使用更方便。
- 使用HP45墨盒，喷头可以轻易更换，维护成本低，可靠性高。
- 兼容市面上主流CAD软件的文件格式。
- 进口伺服电机确保高速、高精度绘图。
- 兼容位图打印/切割功能，适合个性化定制。
- 使用航空铝合金台面，成本损耗低。
- 长刀/短刀，固定刀套/弹性刀套可选，应用于切割各种材料。
- 提供滚动式自动送料功能，方便进料，减少人工操作。
- 采用气动滑台夹取材料，保证送料精准度，实现超长图形的打印和切割。
- 纸架采用与机身一体方案，保证准确放料。
- 私服电机驱动，钢丝皮带+直线导轨传动，保证高精度工作。
- 配备1.1KW风机，材料固定更牢固。
- 自主研发控制系统，升级更新更方便。
- 具有上下分体结构，方便搬运。
- 【选配】服装CAD软件，版型随意设计，简单易学。

适用范围

服装、鞋帽、箱包、家纺等行业。

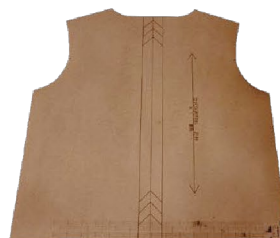
Features

- Compatible with two data transmission methods: RJ45 network port, more convenient for operation.
- HP45 cartridges for plotting, easy replacement of the nozzle; Low maintenance cost and high reliability.
- Compatible with mainstream CAD file formats in the market.
- Its servo control system ensure high-speed, high-precision drawing.
- Both bitmap printing and cutting function, suitable for personalization.
- Use aviation aluminum alloy table top, low cost loss.
- Configured long knife or short knife, and optional fixed knife sleeve or elastic knife sleeve, suitable for cutting various materials.
- Equipped with automatic feeding function, which is convenient for feeding and reduces manual operation.
- Pneumatic slide to clamp the material, ensuring feeding accuracy, and realizing extra-long marker printing and cutting.
- Paper rack adopts an integrated design with the machine body to ensure accurate material placement.
- Servo motor drive, steel belt+linear guide drive, to ensure high-precision work.
- Equipped with 1.1KW fan, material fixing more firmly.
- Control system, more convenient for upgradation.
- With upper and lower frame-split structure, easy for transportation.
- 【Optional】 garment CAD software, freely designing of any patterns and easy to learn.

Application

Clothing, Shoes & Caps, Bags & Luggage, Home Textile and other industries.

平板喷墨切割一体机 Flatbed Inkjet Cutting Plotter



推荐型号 Recommended Model

型号 Model	有效切割面积 Cutting Area	机器尺寸 Machine Size (L×W×H)
GOA-SP-1-2,FP-NM-ID+SKC-1-1200X900-SGAF-WC2+K-AF-1P220	1200mm×900mm	2030mm×1370mm×1000mm
GOA-SP-1-2,FP-NM-ID+SKC-1-1500X1200-SGAF-WC2+K-AF-1P220	1500mm×1200mm	2330mm×1670mm×1000mm

主要参数 Parameters

最高打印速度: 95平米/小时 Max. Printing Speed: 95 m ² /h	缓冲区容量: 一次性快速传输 Buffer Capacity: One-time fast transfer
最高切割速度: 最高1000mm/s Max. Cutting Speed: 1000mm/s	指令系统: HPGL指令 Command System: HPGL command
切割厚度: ≤2 mm Cutting Depth:	控制面板: 液晶触摸屏 Control Panel: LCD touch screen
切割材料: 牛皮纸等一些样板辅助材料 Applied Materials: Kraft paper and other sample auxiliary materials	环境温度: 0-40°C Working Temperature:
切割刀具: 转动刀头 Cutting Tool: Rotating Knife	电源: 单相AC220V±10% 50/60Hz Power Supply: Single phase AC220V±10% 50/60Hz
材料固定方式: 真空吸附 Material Fixing: Vacuum adsorption	环境湿度: ≤85% (25°C时, 无结露) Working Humidity: ≤85% (at 25 C, no condensation)
传输接口: RJ45 Data Transmission:	注: 工作环境无强电场和磁场干扰 Note: no strong electric field and magnetic field interference in the working environment

天津再登高科技股份有限公司

地址: 天津宝坻经济开发区天宝南环路8号4层
邮箱: sales@getonagain.com
网址: www.GetonAgain.com

400-166-8581

Tianjin GetonAgain Co., Ltd.

Address: 4/F. No. 8, Nan Huan Road, Economic Development Zone,
Baodi, Tianjin, China.
Email: sales@getonagain.com www.GetonAgain.com