

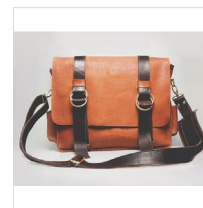
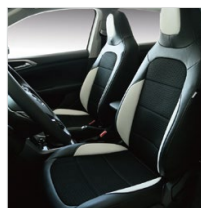
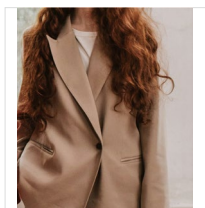
平板扫描数字化仪

Flatbed Scanning Digitizer



适用范围

适用于服装、家具、汽车、家纺、箱包、制鞋、玩具、医疗等行业，对各类纸样和实物版型的数字化录入。



Application

Applicable for clothing, furniture, automotive, hometextile, bags & suitcases, shoe-making, toys, medical industries, etc. all kinds of paper pattern and physical product's panel shape digital input.

机器特点

- 采用线阵扫描模式，无需额外补光，全天候可靠使用。
- 摆片后一键启动，真空吸附-自动扫描-自动传输。
- 根据不同机型，支持超长幅面扫描；扫描速度最高可达7200mm/min。
- 扫描分辨率150-300DPI，高清全景1:1图像确保各类轮廓/剪口/内孔的有效识别。
- 根据裁片颜色，可快速切换底色背景，灵活应对不同材料。
- 输出通用DXF格式文件，可兼容市面上绝大多数CAD软件。

Features

- Adopt line scanning mode, no need extra light compensation, all-weather reliable use.
- One button to start after placing scanning pieces, can vacuum adsorption-auto scanning-auto transmission.
- According to different models, support ultra-long width scanning. scanning speed up to 7200mm/minute.
- Scanning resolution 150-300DPI, high definition panoramic 1:1 image to ensure effective identification of various contours/ notches/inner holes.
- According to the color of scanning pieces, background color can be quickly switched, flexibly respond to different materials.
- Output general DXF file format, compatible with most of CAD software in the market.

推荐型号 Recommended Model

推荐型号 Model	工作面积 Working area	净重 Weight	功率 Weight	占地面积 Machine dimension (L×W×H)
GOA-SP-1-2,FP-NM-DI-1-1000x1200-SGSF-NA-1P220-S	1000×1200	400kg	2kW	2300mm×1750mm×1300mm
GOA-SP-1-2,FP-NM-DI-1-1500x1200-SGSF-NA-1P220-S	1500×1200	480kg	2kW	2800mm×1750mm×1300mm
GOA-SP-1-2,FP-NM-DI-1-2000x1200-SGSF-NA-1P220-S	2000×1200	560kg	2kW	3300mm×1750mm×1300mm

平板扫描数字化仪

Flatbed Scanning Digitizer

主要参数 Parameters

扫描分辨率: Scanning Resolution:	150-300DPI	扫描速度: Scanning Speed:	最高7200mm/min Max. 7200mm/min
识别误差: Identification Accuracy:	≤1mm	裁片固定: Scanning Pieces Fixation:	真空分区吸附 Vacuum sectional adsorption
操作系统: Operating System:	Microsoft Windows WIN7/WIN10/WIN11	拍摄背景: Scanning Background:	深色/浅色任意切换 Dark/Light background switchable
工作方式: Operating Mode:	线性扫描 Linear scanning	环境温度: Working Temperature:	0-40°C
数据接口: Data Interface:	USB 2.0	电源: Power Supply:	单相AC220V±10% 50/60Hz 1P AC220V±10% 50/60Hz
扫描材料厚度: Scanning Material Thickness:	≤3mm	环境湿度: Working Humidity:	≤85% (25°C时, 无结露) ≤85% (at 25°C, no condensation)
软件连接: Software Connection:	兼容市面上主流服装CAD软件 Compatible with most of garment CAD software in the market	裁片固定方式: Method of Fixing The Fabric Pieces:	PVC板压覆、真空吸附 PVC board covering, Vacuum adsorption.

主要配置 Main Equipment



高清扫描模块
HD scanning module



伺服电机
Servo motor



KNK直线模组
KNK linear module



真空平台
Vacuum table



真空负压风机
Vacuum compressor



施耐德电气开关
Schneider Switch

天津再登高科技股份有限公司

地址: 天津宝坻经济开发区天宝南环路8号4层

邮箱: sales@getonagain.com

网址: www.GetonAgain.com

400-166-8581

Tianjin GetonAgain Co., Ltd.

Address: 4/F. No. 8, Nan Huan Road, Economic Development Zone, Baodi, Tianjin, China.

Email: sales@getonagain.com

www.GetonAgain.com