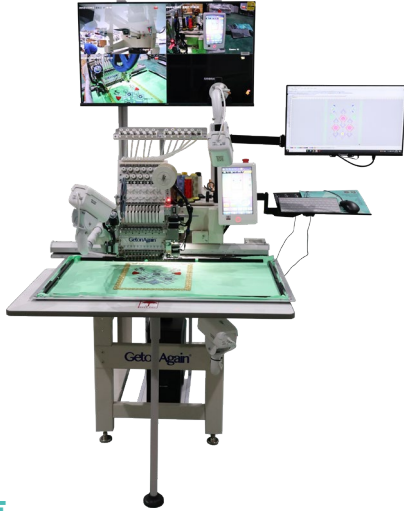


云智能教学专用绣花机



机器特点

- 教学专用绣花设备在网络和云服务的支持下实现了教学云存储、云播放、云控制及多频交互式教学友好界面。
- 可将绣花打版、机器操作、课程录制、同步播放、侧重点特显等集为一体，通过再登高电控实现，让绣花初学者能够更容易理解和学习电脑绣花。
- 更方便于老师教学，改善教学条件，提升教学质量。
- 云课堂的录制文件能够自动转换成教学资源，并借助网络 and 云服务的支持存储在云端。
- 实现单头12色平绣、亮片绣、跟踪绳绣、雕孔绣、帽绣、成衣绣之间的切换。
- 通过网络和云端支持，录制内容可以实时传送到适配的大屏幕、学生电脑、平板电脑和手机等用户端，实现同步播放。

机器参数 Parameters

型号 Model:	GOACE-NM-TC-1-800x500-LB-F12-VR1-R,B,TC-1P220		
工作面积: Working Area:	平绣: 800mmx500mm Flat Embroidery:	成衣绣: 295mmx295mm Tubular Embroidery:	帽绣: Cap Embroidery: 260mmx60mm
工作速度: Speed of Work:	≤1000rpm	≤1000rpm	≤900rpm
重量(kg): Weight:	200	功率: Power: 1.2kw	剪线方式: 静态剪线 Thread Trimming: Static
针步: Stitch Length:	0.1-12.7mm	换色方式: Color Change: 凸轮换色 By Cam	勾线方式: 独立勾线 Thread Hooking: Independently
主轴驱动: Main Shaft Driving:	伺服电机 Servo Motor	输入电源: Power Supply: 1P 220V/50Hz	绣框驱动: Frame Driving: Stepping Motor
凸轮(可选): Cam (Optional):	双凸轮 Double Cam	锁头方式: Head Lock: 电磁铁 By Electromagnet	
旋梭(可选): Rotary Hook:	日本佐文或日本广濑 Japanese Koban or Japanese Hirose	机器尺寸(L×W×H): Machine Size:	1520mmx1250mmx2200mm

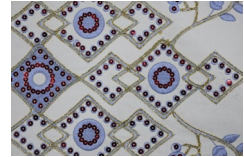
Cloud Smart Teaching Embroidery Machine

适用范围

适用于服装与服饰设计、服装设计工程、产品设计、广告设计等电脑绣花理论与实训一体化教学。

Application

Suitable for integrated theoretical and practical teaching of computer embroidery in fields such as fashion and apparel design, clothing design and its engineering, product design and advertising design.



Features

- This teaching-specific embroidery equipment, supported by network and cloud services, enables teaching cloud storage, cloud playback, cloud control, and a multi-channels interactive teaching friendly interface.
- Integrates embroidery pattern creation, machine operation, course recording, synchronous playback, and emphasis highlighting into one system. Through GetonAgain electronic control, allows embroidery beginners more easily to understand and learn computer embroidery.
- Makes teaching more convenient for instructors, improves teaching conditions, and enhances teaching quality.
- Recorded files from the cloud classroom can be automatically converted into teaching resources and stored in the cloud with the support of network and cloud services.
- Support switching between single-head 12-color flat embroidery, sequin embroidery, cording embroidery, boring embroidery, cap embroidery, and garment embroidery.
- With network and cloud support, recorded content can be transmitted in real-time to compatible devices such as large screens, student computers, tablets, and smartphones, enabling synchronous playback.