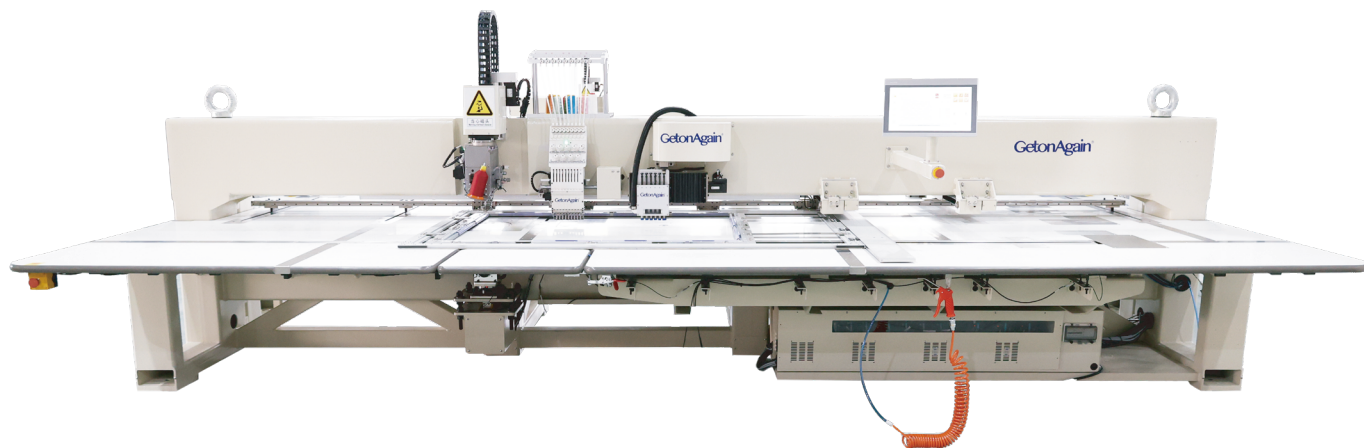


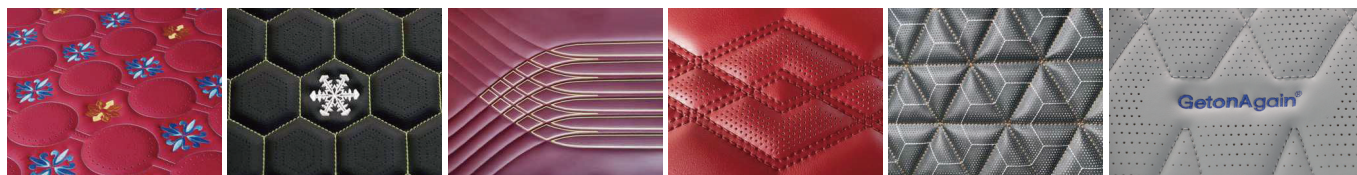
## 全自动冲绣缝一体机 (旋转机头+9色绣花+圆孔冲) (SewPerEmb Pro)

## Fully Automatic Perforation (Round-hole)+Embroidery+ Sewing (Rotating Head) Machine



### 适用范围

适用于汽车座椅、汽车内饰、航空座椅、箱包、家具等各种类型及不同厚度的真皮、超纤皮革的冲孔+绣花+缝制工艺。



### 机器特点

- 集成冲孔、绣花、缝制功能于一体，花型任意设计，轻松实现冲、绣、缝任意搭配的复杂工艺。
- 采用 15 寸触摸式中控屏，友好的人机界面，操作方便。
- 针对皮革类材料专门研制开发的冲孔机头，冲孔刀选用：0.8mm、1.0mm、1.2mm、1.5mm、2.0mm、2.5mm；
- 9色绣花夹线机构采用新式面线夹持机构，降低断线掉线率绣花机头，满足不同领域的绣作需求。
- 针对皮革材料专门研制开发的缝制机头，缝制线迹美观，压脚可通过电机控制高度，可调节范围大。
- 缝制机头可升降 50mm，上料空间充足，便于操作。
- 缝制机头采用任意转结构，缝制线迹美观，减少移框频次，提升效率。
- 具备面线断线检测、底线计数、裁片计数功能。
- 针杆及相关零件采用 DLC 涂层处理，耐磨损且延长使用寿命。
- 针对冲绣缝工艺特性研制的机架，结构稳固确保冲孔绣作缝制精度。
- 专门开发的工装夹具，方便装卸，便于更换材料。
- **选配：**专业制版软件，再登高智能冲绣缝 CAD 系统。
- **选配：**可搭载智能物联网系统，支持远程实时监控与云端数据管理，实现设备状态、生产参数的可视化；自动记录与分析生产数据，助力企业优化生产效率，打造数字化生产管控体系。

### Application

Suitable for punching + embroidering + sewing processes of various types and different thicknesses of genuine leather and microfiber leather used in automotive seats, car interiors, aviation seats, luggage and furniture, etc.

### Features

- Integrates punching, embroidery, and sewing into one machine, allowing for arbitrary pattern design and seamless combinations of punching, embroidery, and sewing for complex processes.
- Equipped with a 15-inch touchscreen central control panel with a user-friendly interface for easy operation.
- Specifically developed punching machine head for leather materials, the punching tools are available in 0.8mm, 1.0mm, 1.2mm, 1.5mm, 2.0mm, and 2.5mm sizes.
- Advanced 9-Color Embroidery Thread Clamping Mechanism,
- it reduces thread breakage and dropout, meeting embroidery requirements across various industries.
- Specialized Sewing Head for Leather, it delivers beautiful stitching, with motor-controlled presser foot height adjustment, offering a wide adjustment range.
- Sewing Head with 50mm Lifting Height, makes material loading space enough and easy operation.
- Sewing machine head features an "arbitrary rotation" structure, creating beautiful stitching, reducing frame movement frequency, and improving efficiency.
- Includes Upper Thread Breakage Detection, Bobbin Thread Counting, and Piece Counting.
- Needle bar and related parts are treated with DLC coating, offering wear resistance and extending service life.
- The machine frame is specifically designed for punching, embroidery, and sewing processes, ensuring structural stability and maintaining high precision.
- Custom-Designed Fixtures, easy to mount and unmount, facilitating quick material changes.
- **Optional:** Professional pattern-making software, the GetonAgain Intelligent Punching + Embroidery + Sewing CAD System.
- **Optional:** Can be equipped with an intelligent IoT system, supporting remote real-time monitoring and cloud-based data management, enabling visualization of equipment status and production parameters. Automatically records and analyzes production data, helping enterprises optimize production efficiency and build a digital production control system.

## 全自动冲绣缝一体机（旋转机头+9色绣花+圆孔冲）(SewPerEmb Pro) Fully Automatic Perforation (Round-hole)+Embroidery+ Sewing (Rotating Head) Machine

### 推荐型号 Model

型号 Model	占地面积 Machine Size (L×W×H)
GOACE-L-P+E+S-1-1200×800-B-P6+F9+IS2-VR1,HR2.6-LH50,RH360,AO-3P380	5420mm×3160mm×1765mm
GOACE-L-P+E+S-1-900×600-B-P6+F9+IS2-VR1,HR2.6-LH50,RH360,AO-3P380	4820mm×2660mm×1765mm

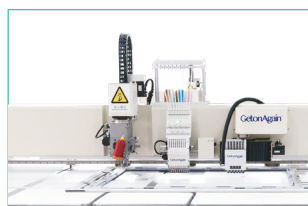
### 主要参数 Parameters

最高缝纫速度: Sewing Speed:	1000 针 / 分钟 Up to 1000 RPM	最高绣花速度: Embroidery Speed:	1000 针 / 分钟 Up to 1000 RPM
冲孔速度: Punching Speed:	800-1000 孔 / 分钟 800-1000 holes/min.	绣花适用针号: Embroidery Applicable Needles:	9#-14#
缝纫适用针号: Sewing Applicable Needles	18#-23#	针迹步长: Stitch Length:	0.1-12.7mm
夹料方式: Material Clamping Method:	夹皮革绣框夹料 Leather embroidery frame material clamping	缝纫机头升降行程: Sewing Head Lifting Stroke:	50mm
缝纫梭芯: Sewing Bobbin:	皮革专用 2.6 倍大梭芯 Special 2.6 x jumbo bobbin for leather.	缝纫梭芯直径: Sewing Bobbin Diameter:	31.8mm
供油: Oil Supply:	自动供油 Automatic oil supply.	气压: Air Pressure:	0.6MPa
电源: Power Supply:	3P 380V		

### 主要配置 Main Configuration



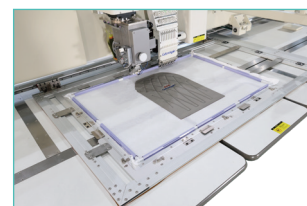
高清触摸屏  
High-Definition Touch Screen



专用冲孔、绣作、缝制机头  
Specialized Punching, Embroidery  
and Sewing Heads



专用2.6倍旋梭  
Specialized 2.6x Rotary Hook



专用工装  
Special Designed Fixture

### 天津再登高智能制造有限公司

地址: 天津宝坻经济开发区天宝南环路3号B楼  
邮箱: sales@getonagain.com  
网址: www.GetonAgain.cn

**400-166-8581**

### Tianjin GetonAgain SM Co., Ltd.

Address: Block B, No.3, Nan Huan Road, Economic Development Zone,  
Baodi, Tianjin, China. **0086-22-6035 9933**  
Email: sales@getonagain.com www.GetonAgain.com